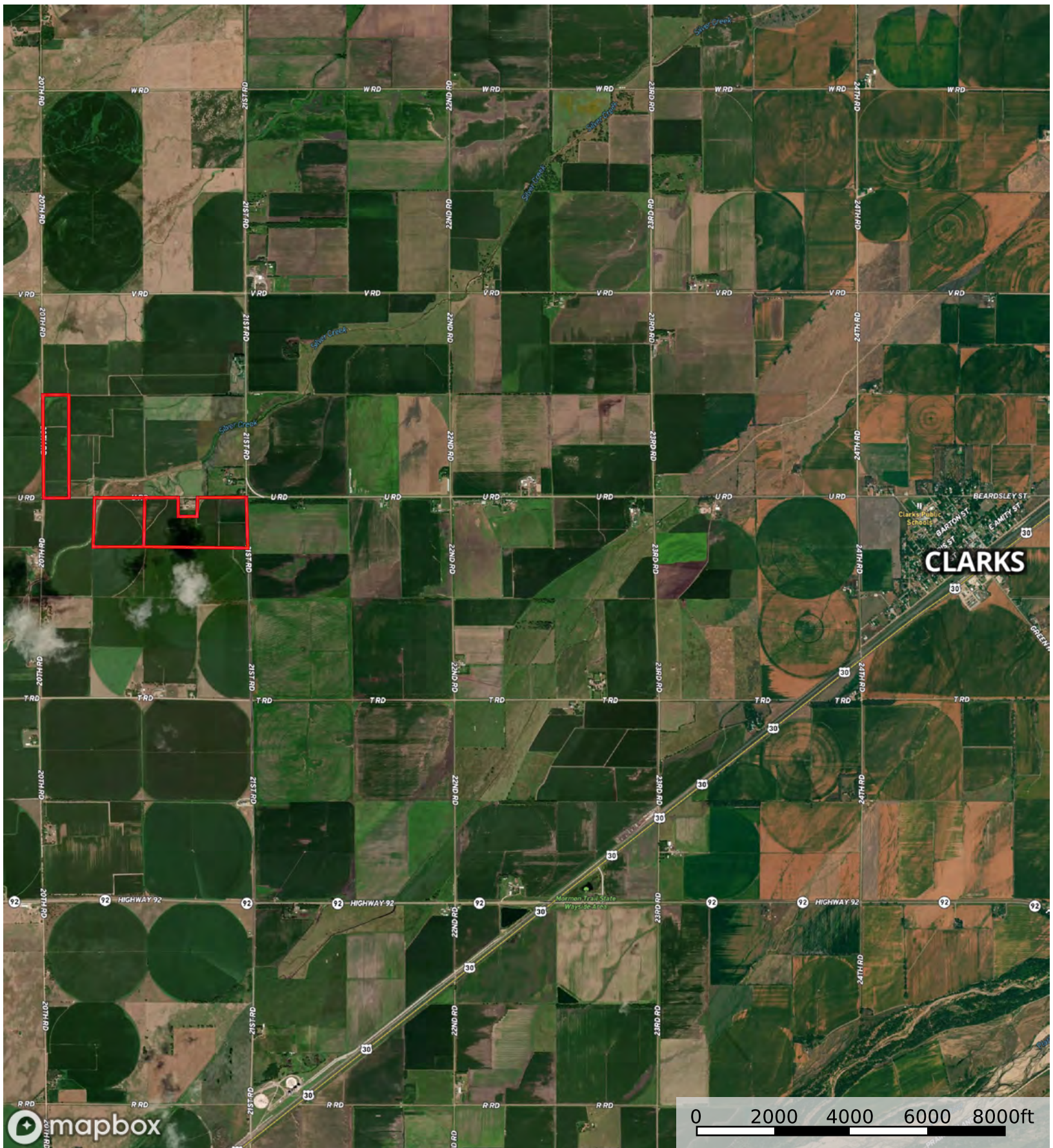


- Tract 3
- Tract 2
- Tract 1

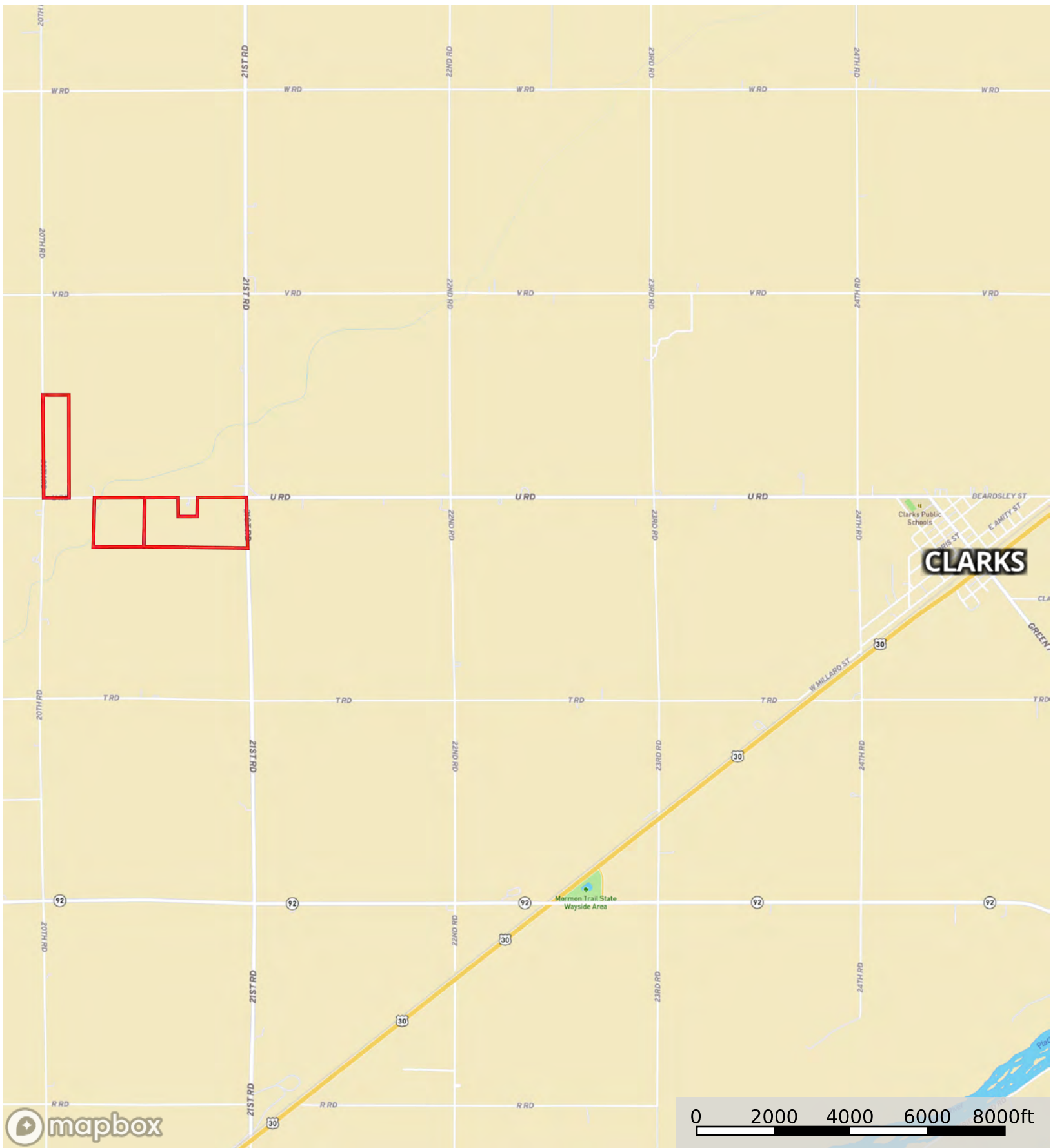


CLARKS

- Tract 3
- Tract 2
- Tract 1

Merrick49

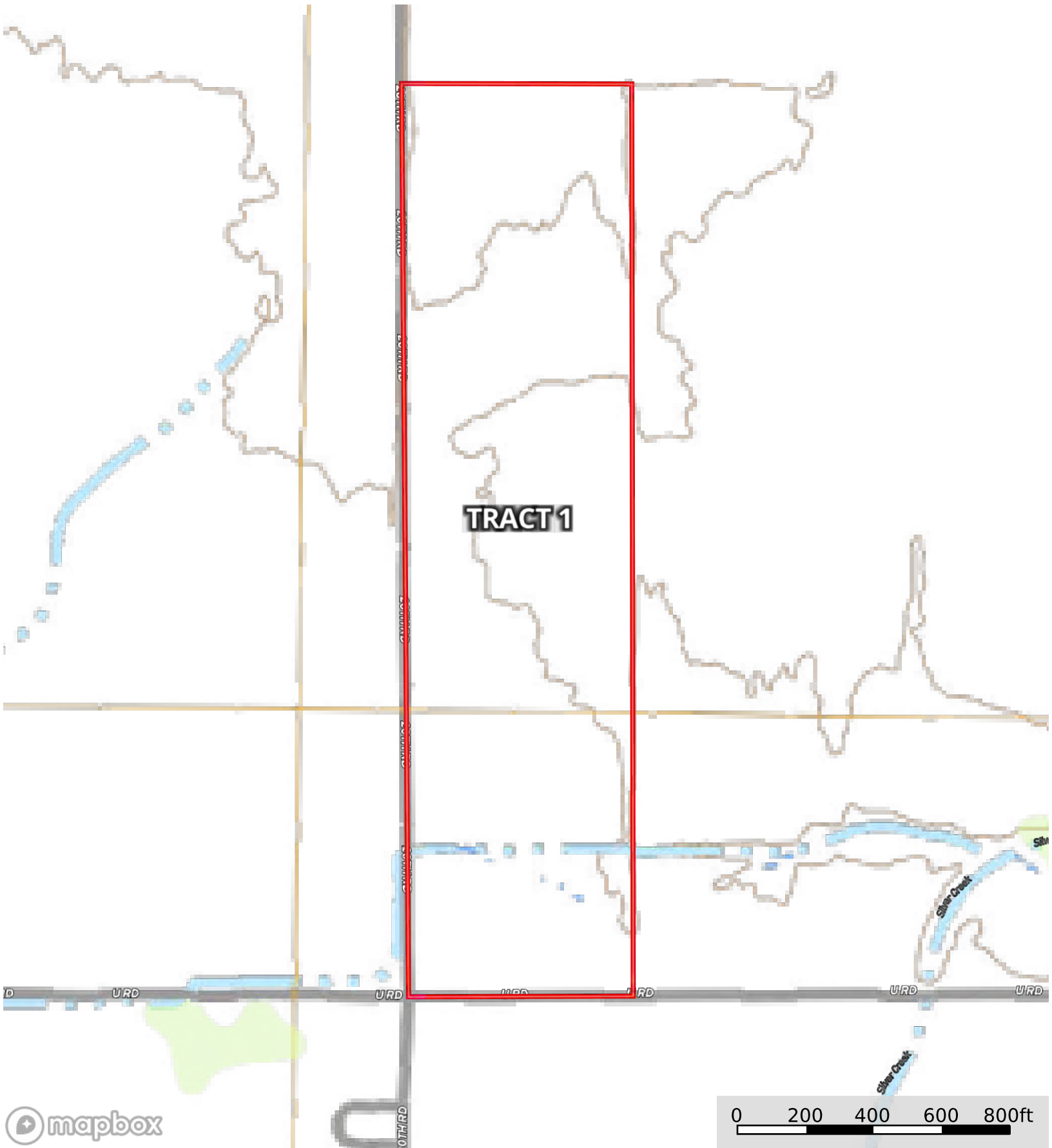
Nebraska, AC +/-



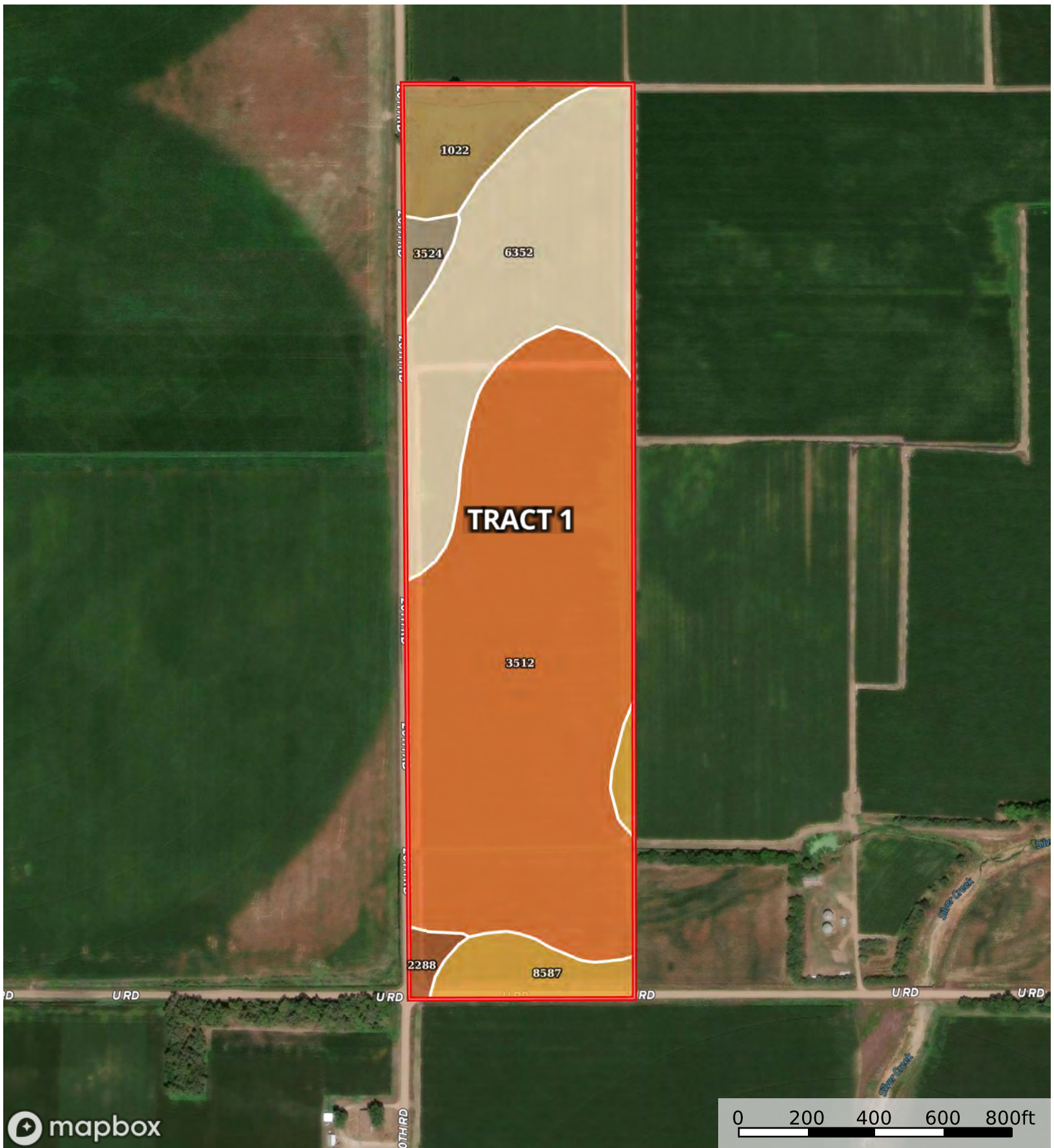
- Tract 3
- Tract 2
- Tract 1



 Tract 1



Tract 1



Tract 1

Tract 1 41.08 ac

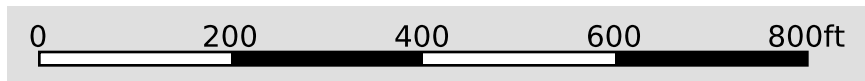
SOIL CODE	SOIL DESCRIPTION	ACRES	%	CPI	NCCPI	CAP
3512	Lamo clay loam, sandy substratum, 0 to 1 percent slopes	23.71	57.72	0	69	2w
6352	Leshara silt loam, occasionally flooded	10.91	26.56	0	64	2w
1022	Caruso-Gayville complex, 0 to 1 percent slopes	2.87	6.99	0	54	2w
8587	Wann sandy loam, occasionally flooded	2.4	5.84	0	44	2w
3524	Lamo-Saltine complex, occasionally flooded	0.71	1.73	0	54	2w
2288	Wann loam, 0 to 2 percent slopes, occasionally flooded	0.48	1.17	0	54	2w
TOTALS		41.08(*)	100%	-	64.73	2.0

(*) Total acres may differ in the second decimal compared to the sum of each acreage soil. This is due to a round error because we only show the acres of each soil with two decimal.






Tract 2



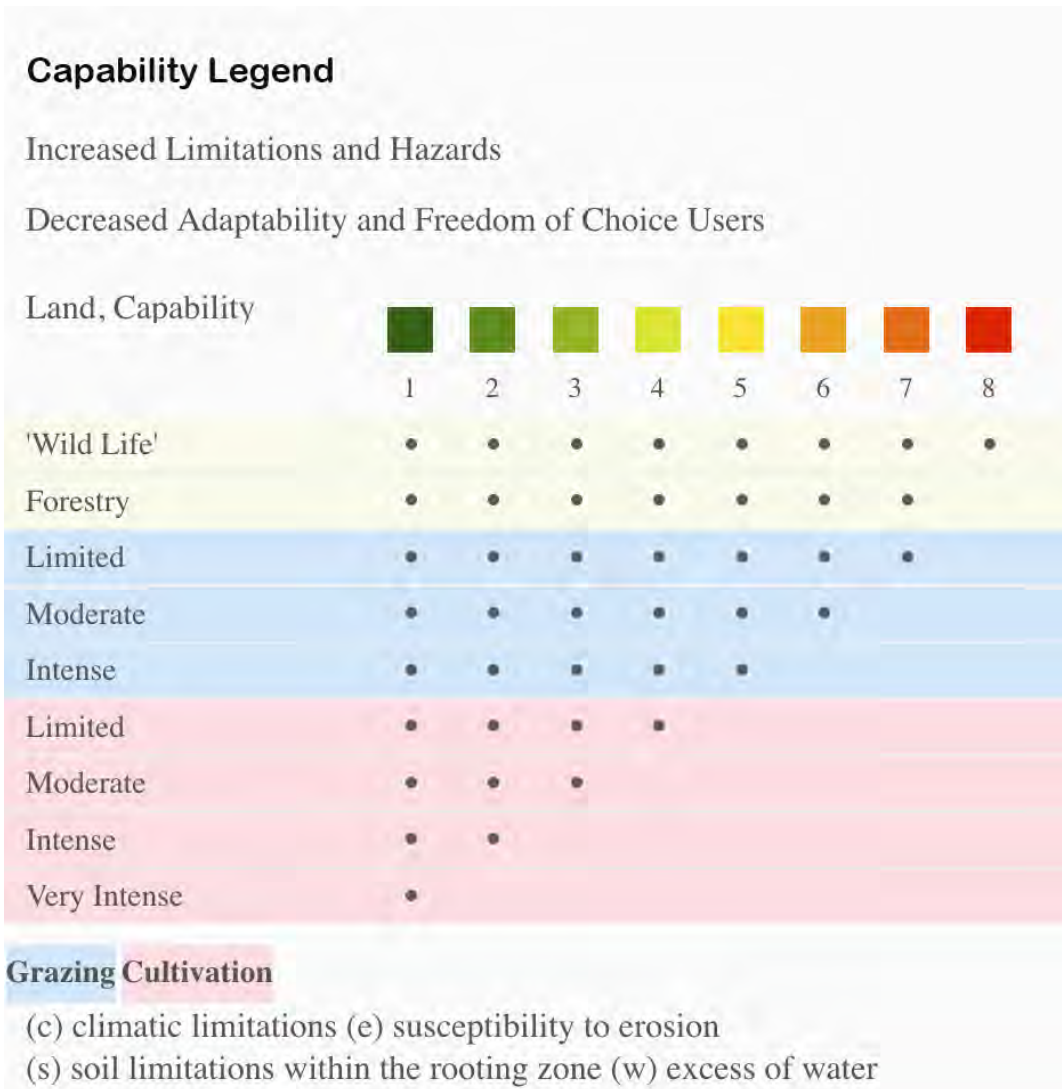
 Tract 2

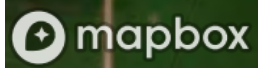
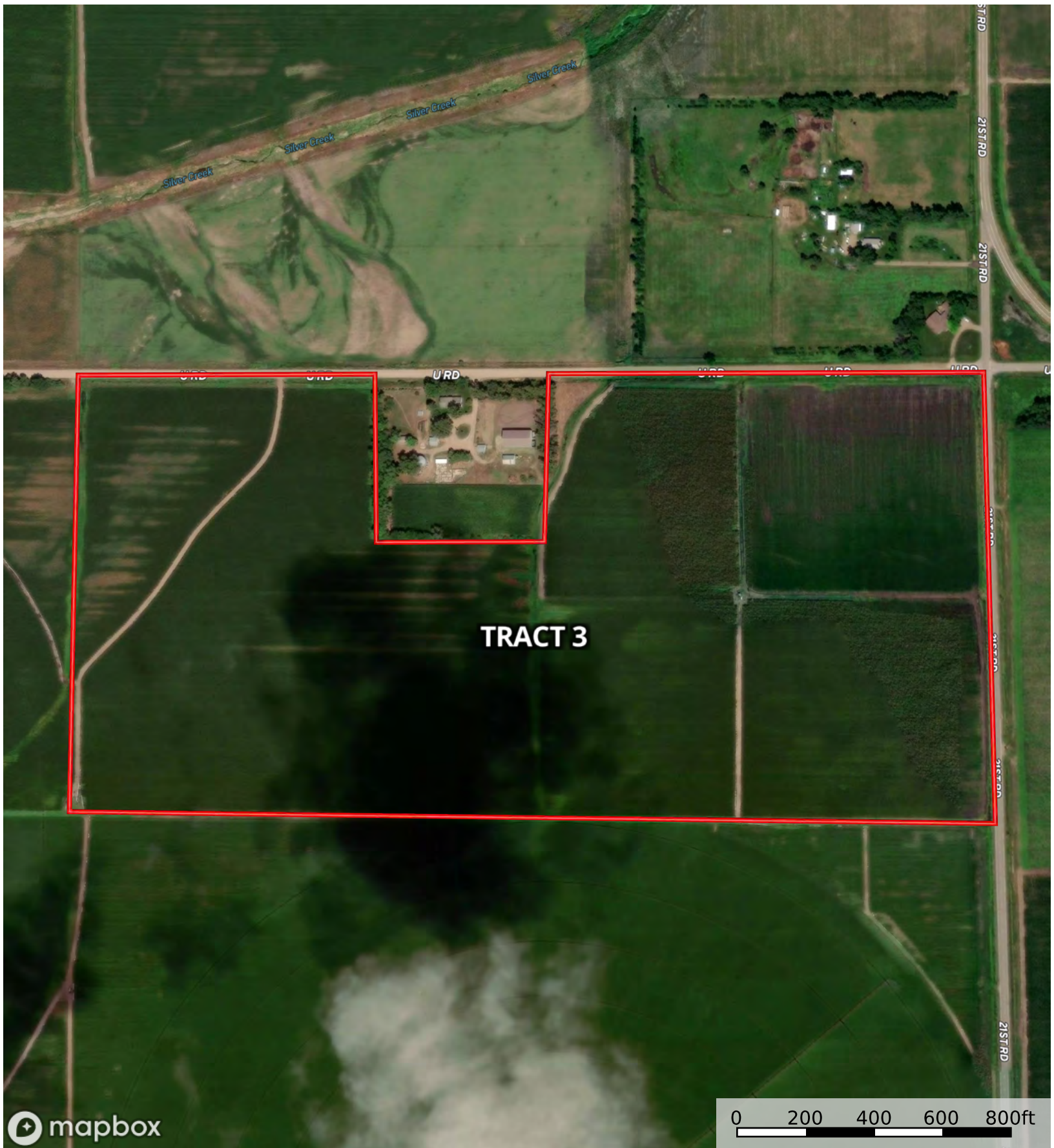


 Tract 2

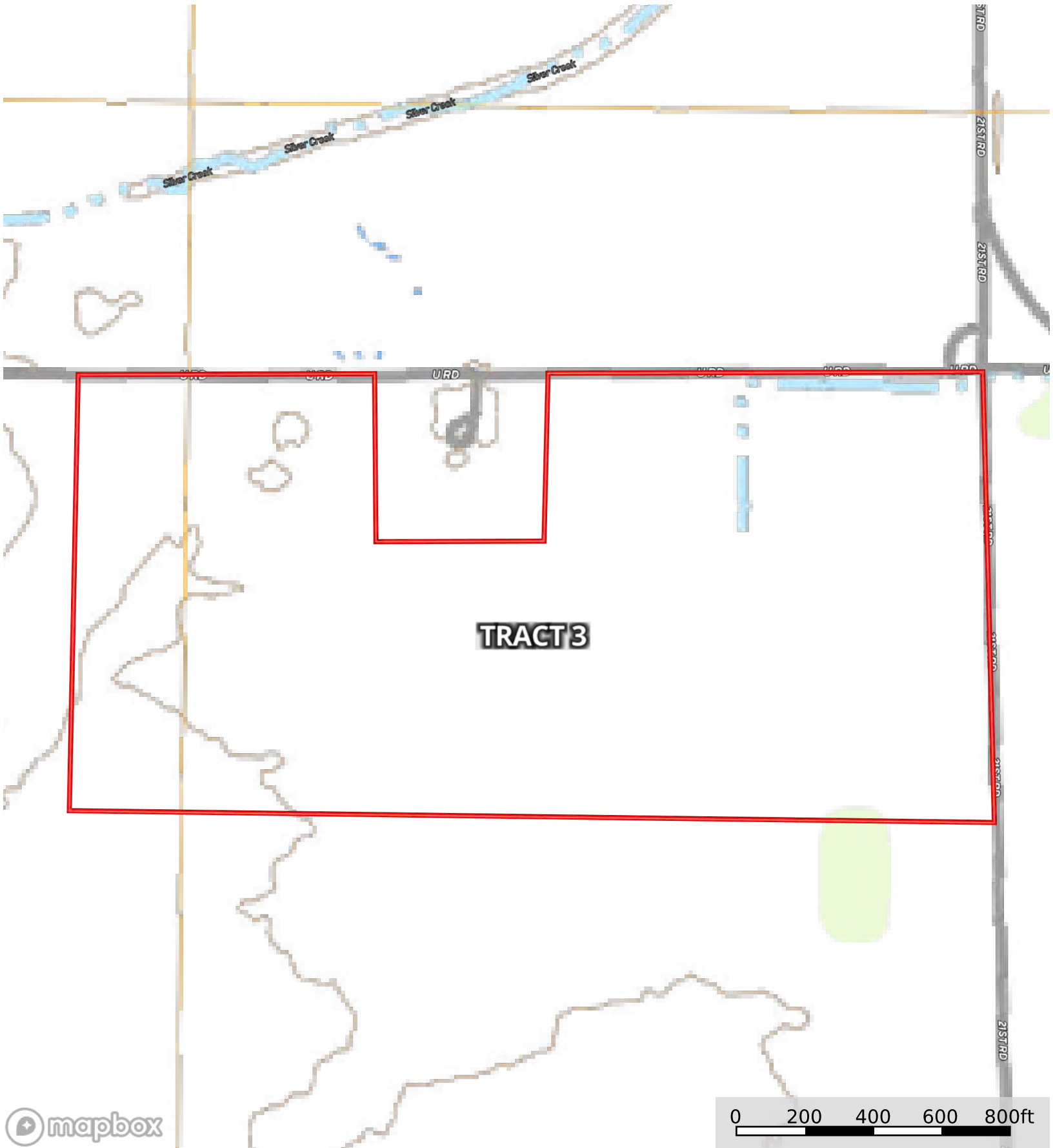
SOIL CODE	SOIL DESCRIPTION	ACRES	%	CPI	NCCPI	CAP
8587	Wann sandy loam, occasionally flooded	24.8	64.74	0	44	2w
1022	Caruso-Gayville complex, 0 to 1 percent slopes	13.51	35.26	0	54	2w
TOTALS		38.31(*)	100%	-	47.53	2.0

(*) Total acres may differ in the second decimal compared to the sum of each acreage soil. This is due to a round error because we only show the acres of each soil with two decimal.





 Tract 3



 Tract 3



mapbox

Tract 3

Tract 3 73.77 ac

SOIL CODE	SOIL DESCRIPTION	ACRES	%	CPI	NCCPI	CAP
2288	Wann loam, 0 to 2 percent slopes, occasionally flooded	22.66	30.71	0	54	2w
8587	Wann sandy loam, occasionally flooded	21.69	29.4	0	44	2w
6529	Janude sandy loam, very rarely flooded	19	25.75	0	60	2e
8531	Novina sandy loam, rarely flooded	5.36	7.26	0	59	2w
1022	Caruso-Gayville complex, 0 to 1 percent slopes	5.06	6.86	0	54	2w
TOTALS		73.77(*)	100%	-	52.96	2.0

(*) Total acres may differ in the second decimal compared to the sum of each acreage soil. This is due to a round error because we only show the acres of each soil with two decimal.

