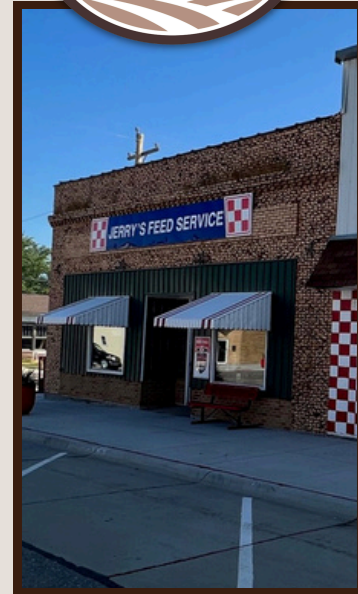
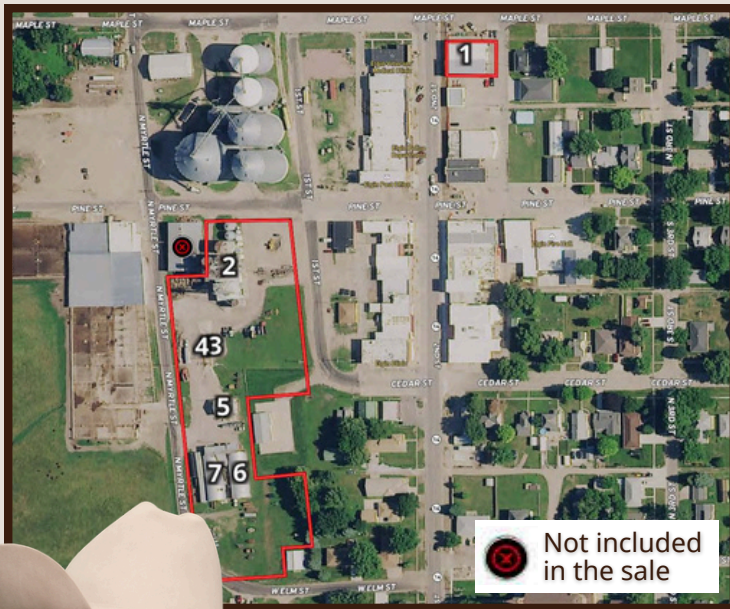


HEARTLAND NUTRITION, LLC

JERRY'S FEED SERVICE | 113 N 2ND STREET | ELGIN, NE 68636



Great opportunity to purchase a turn-key business in a strong agricultural community. Heartland Nutrition, once Jerry's Feed Service, has been serving the Elgin area for decades and has a faithful client base throughout Antelope and the surrounding counties. The sale includes a main street store front building, feedmill with grain legs, bins, mixers, mills, and scale. Feed trucks, trailers, skid loader, creep feeders, and feed inventory are also included with the sale. Call the agents for a detailed list.



1. Main Street Store - counter, merchandise, bagged feed, lick tubs, loading dock
2. Feedmill, bins, mixers, rollers, mills
3. Scale Office - 30' x 40' (approximate)
4. Scale - 60 ton, 65'
5. Shop - 30' x 40' (approximate)
6. Arch-Rib Quonset - 35' x 100' (approximate), feed and equipment storage
7. Arch-Rib Quonset - 35' x 100' (approximate), feed and equipment storage

Property Taxes (2025) - \$ 1,157.98

*Please contact Jeff or Ted for property details and price.



Ted Baum

Farm & Ranch Specialist
Elgin, NE
(402) 843-8370

Ted.Baum@AgWestLand.com

Jeff Moon, ALC

Farm & Ranch Specialist
Holdrege, NE
(308) 627-2630

Jeff.Moon@AgWestLand.com





The information contained herein is as obtained by AgWest Land Brokers LLC—Holdrege, NE from the owner and other sources. Even though this information is considered reliable, neither broker nor owner make any guarantee, warranty or representation as to the correctness of any data or descriptions. The accuracy of such statements should be determined through independent investigation made by the prospective purchaser. This offer for sale is subject to prior sale, errors and omissions, change of price, terms or other conditions or withdrawal from sale in whole or in part, by seller without notice and at the sole discretion of seller. Readers are urged to form their own independent conclusions and evaluations in consultation with legal counsel, accountants, and/or investment advisors concerning any and all material contained herein. Maps are for illustrative purposes only and are not intended to represent actual property lines.

