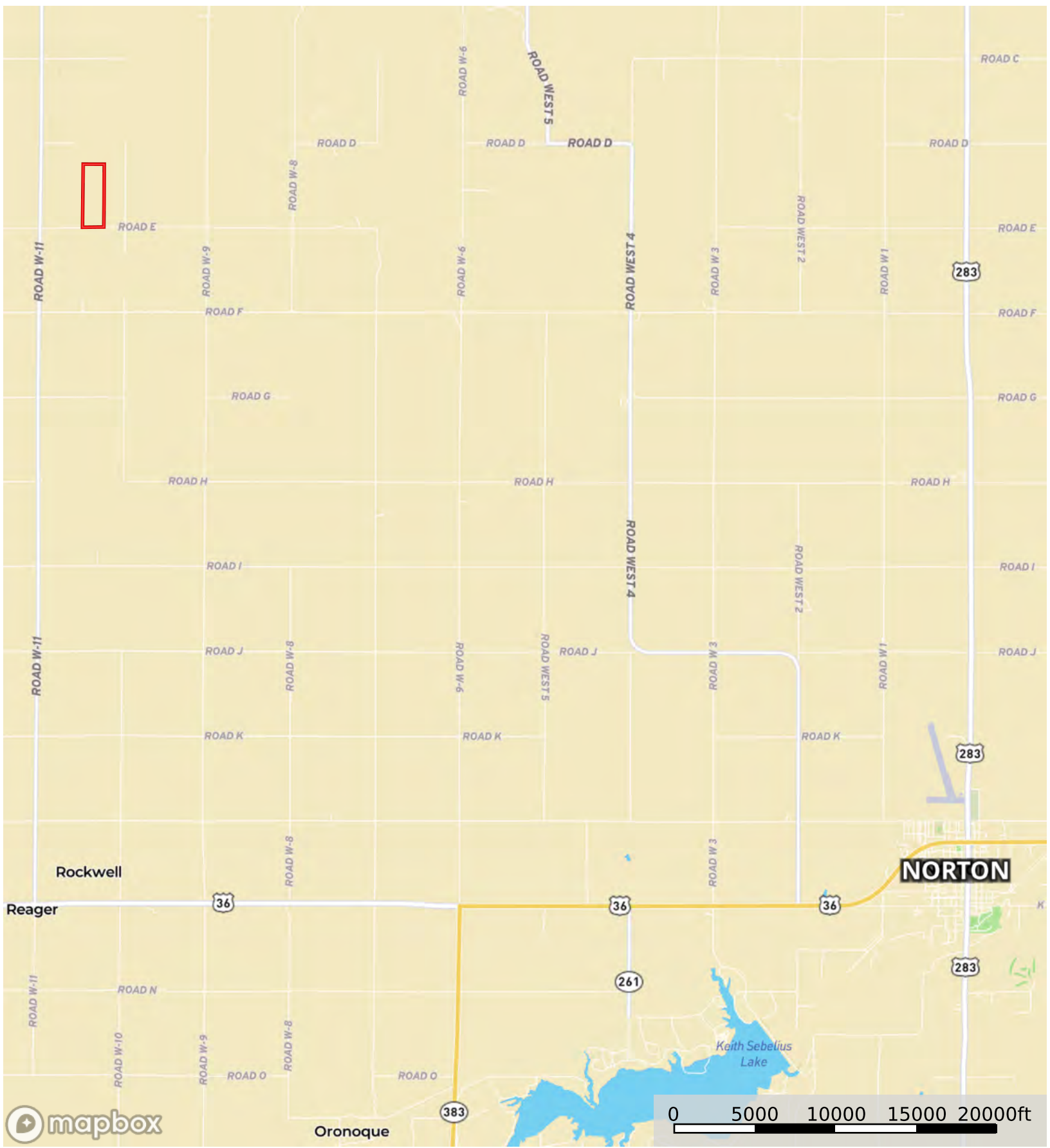
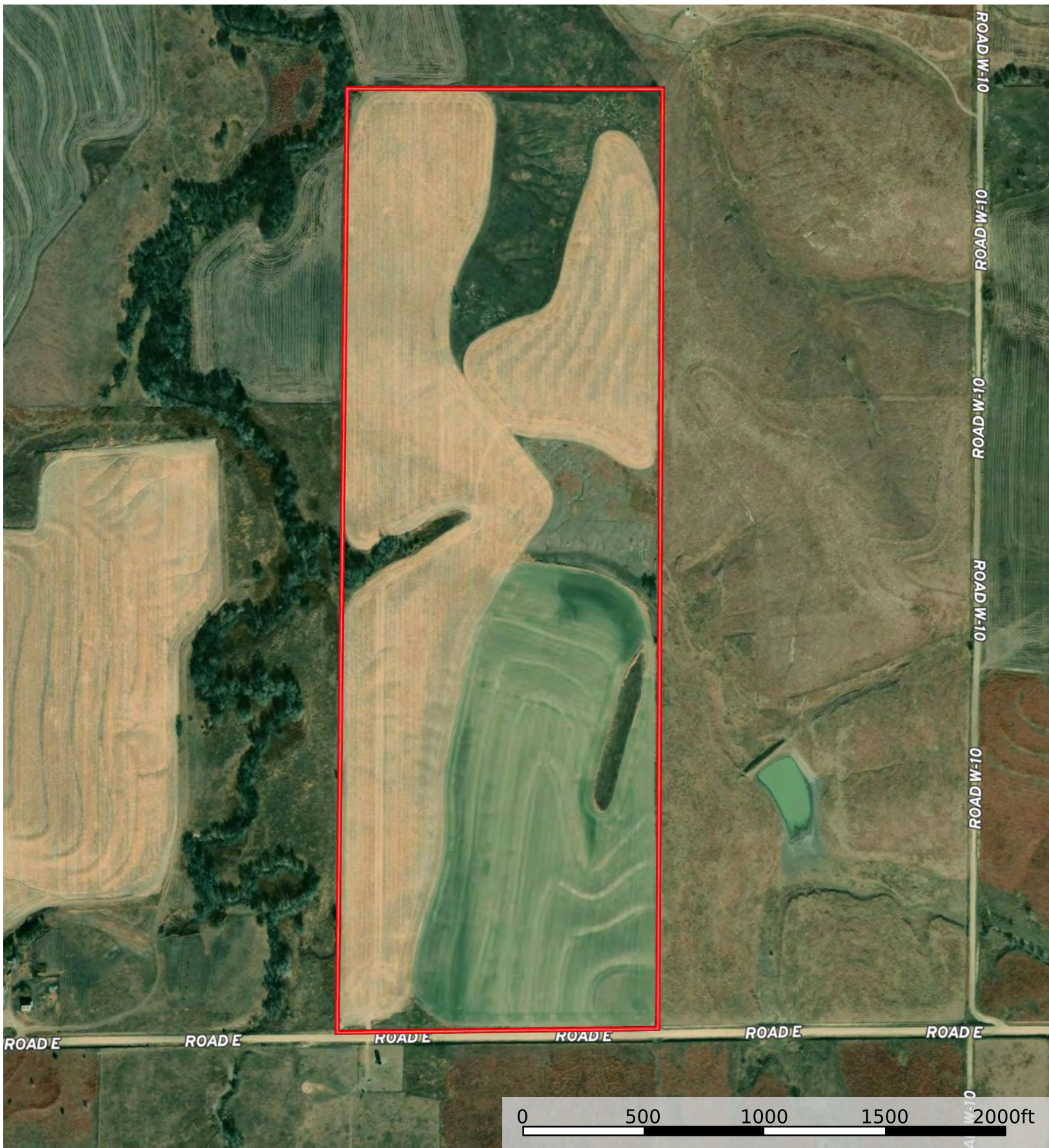


mapbox

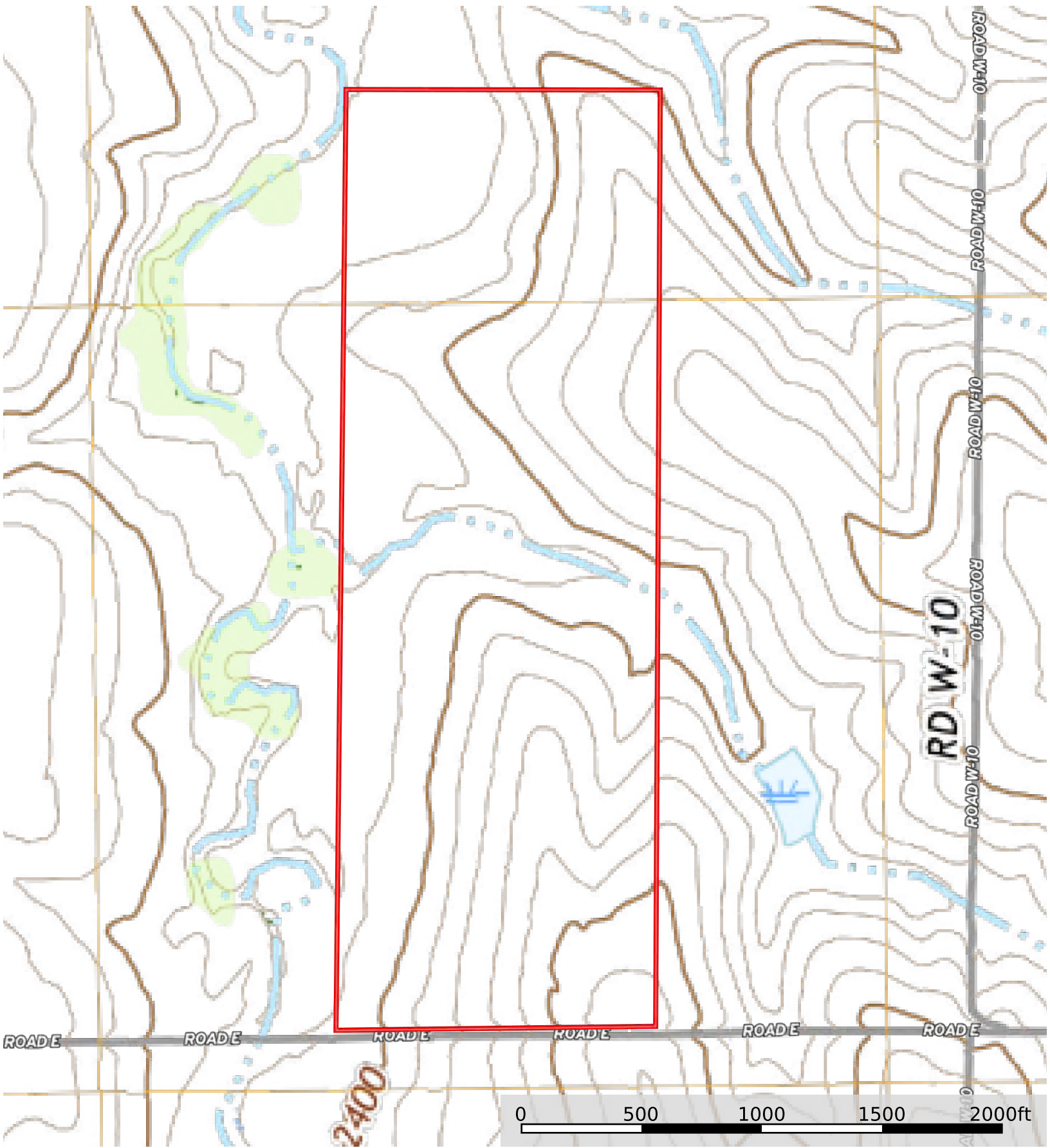
Boundary



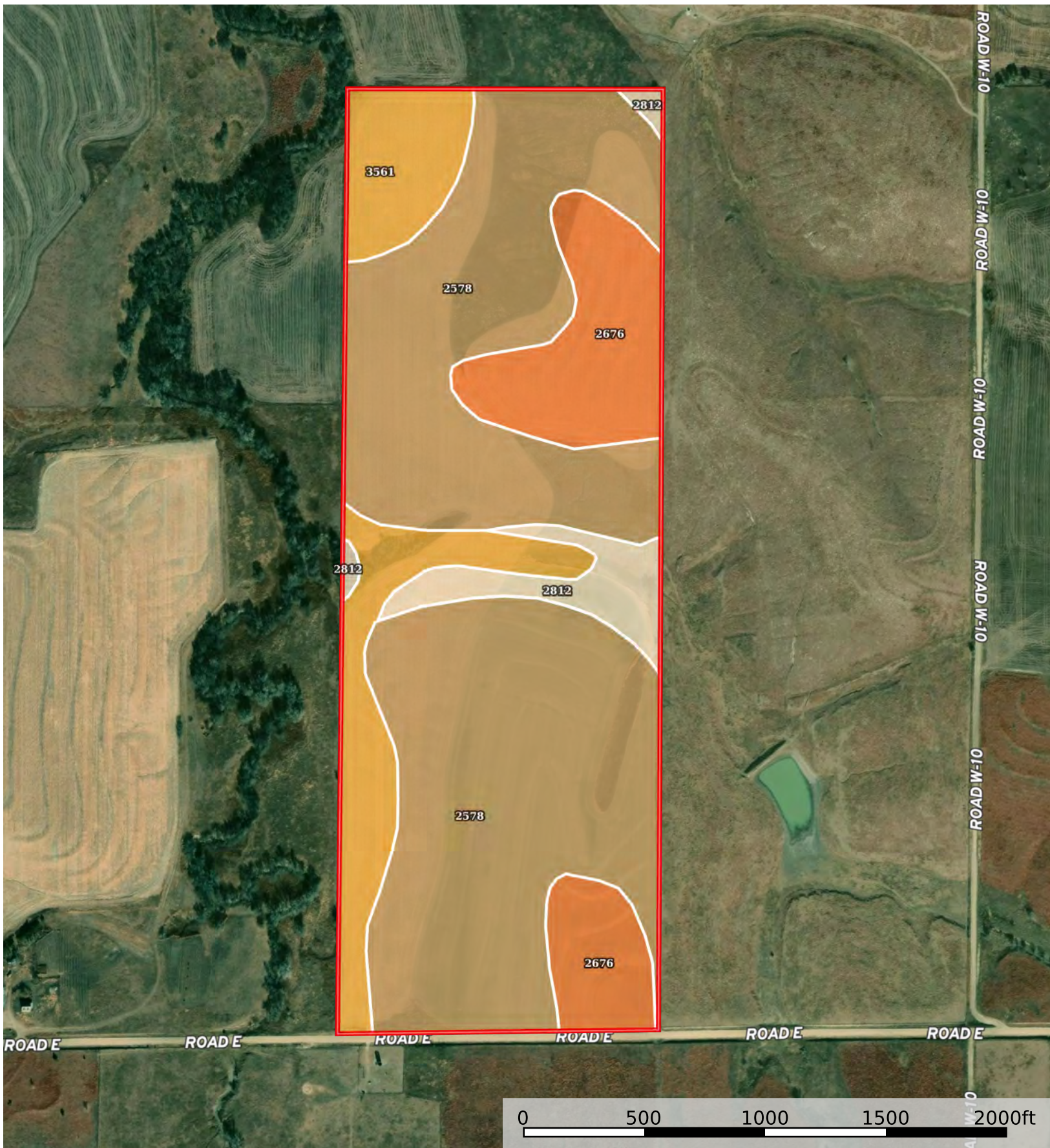
Boundary



Boundary



 Boundary



 Boundary

Boundary 118.74 ac

| SOIL CODE | SOIL DESCRIPTION | ACRES | % | CPI | NCCPI | CAP |
|-----------|----------------------------------------------------------------------|-----------|-------|-----|-------|------|
| 2578 | Coly and Uly silt loams, 6 to 10 percent slopes, eroded | 76.22 | 64.19 | 0 | 63 | 4e |
| 3561 | Hobbs silt loam, occasionally flooded | 18.21 | 15.33 | 0 | 79 | 2w |
| 2676 | Holdrege silt loam, 3 to 7 percent slopes, eroded, plains and breaks | 18.0 | 15.16 | 0 | 68 | 3e |
| 2812 | Uly silt loam, 10 to 20 percent slopes | 6.31 | 5.31 | 0 | 66 | 6e |
| TOTALS | | 118.74(*) | 100% | - | 66.37 | 3.65 |

(*) Total acres may differ in the second decimal compared to the sum of each acreage soil. This is due to a round error because we only show the acres of each soil with two decimal.

