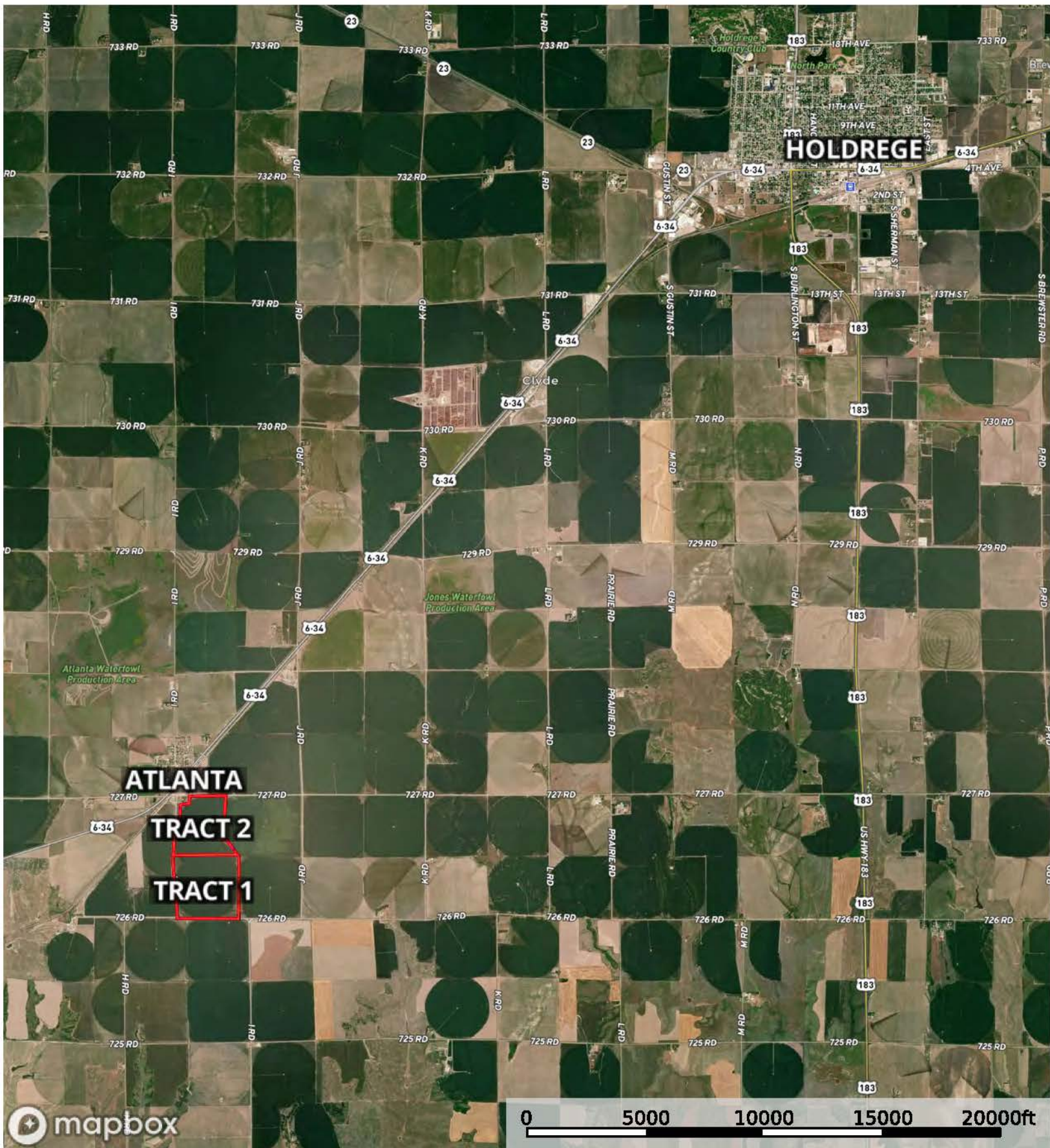
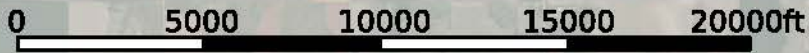


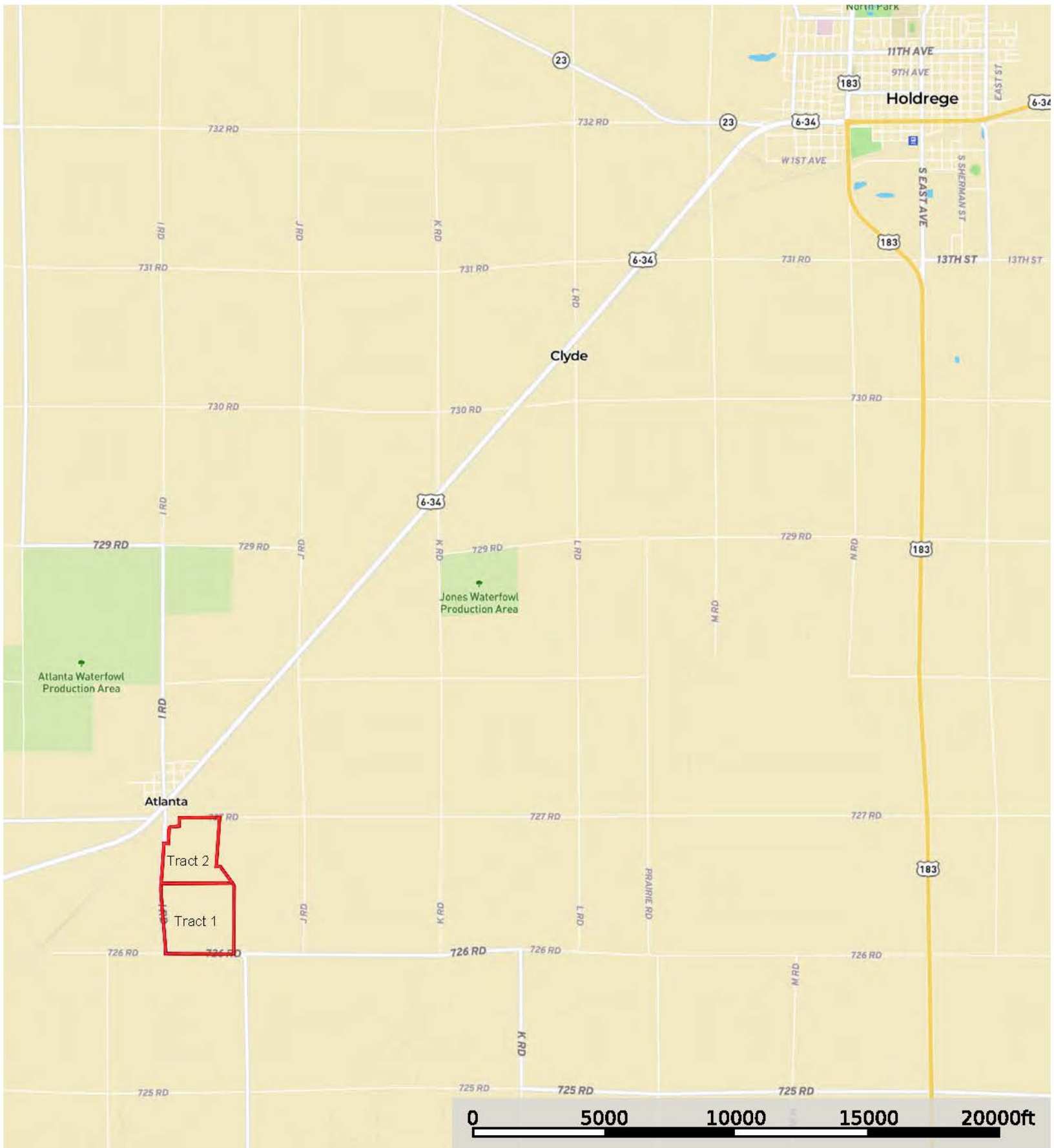
 Tract 2     Tract 1

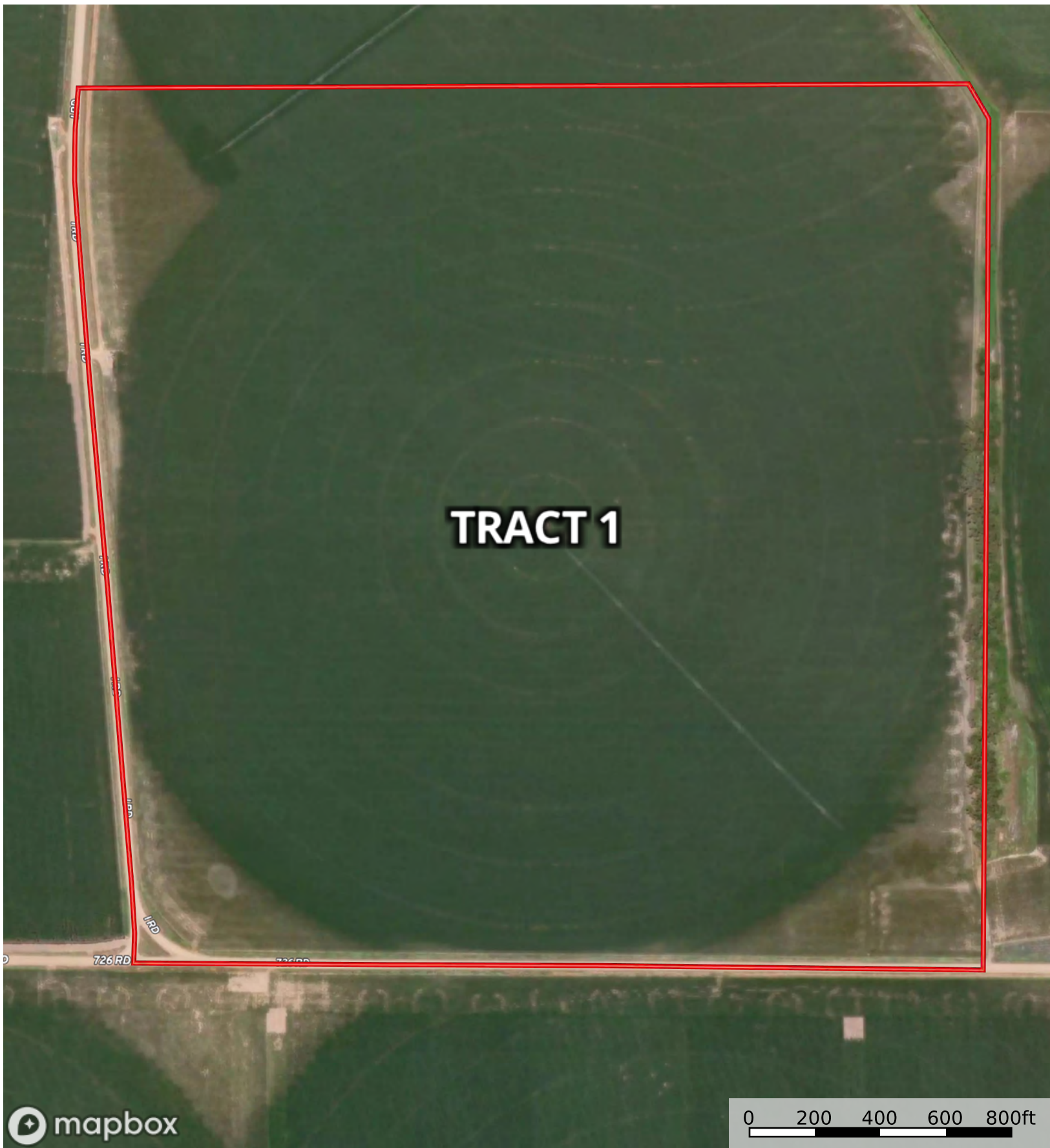


**ATLANTA**  
**TRACT 2**  
**TRACT 1**



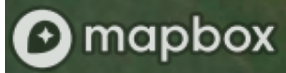
Tract 2 Tract 1



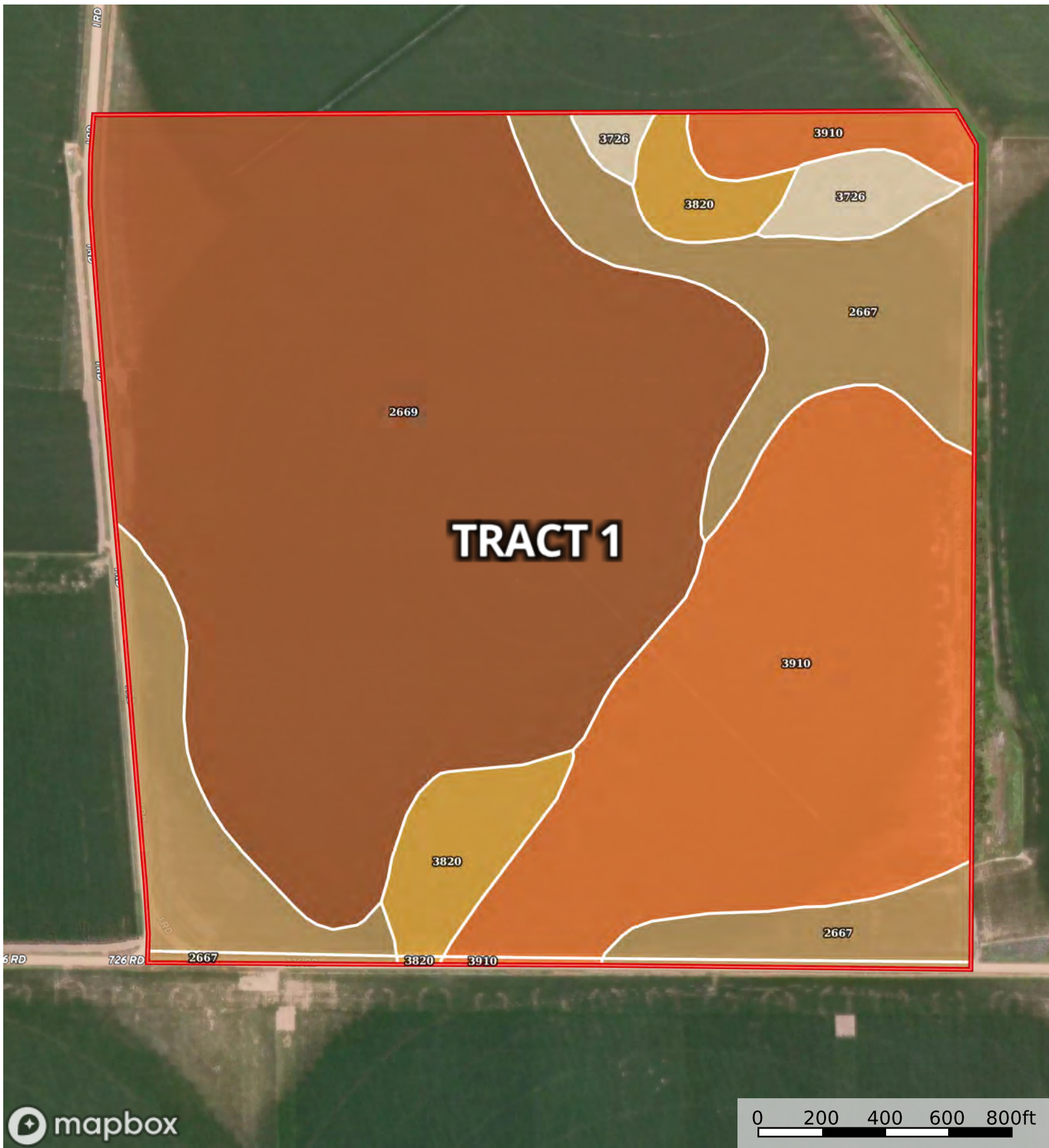


**TRACT 1**

726 RD



Tract 1

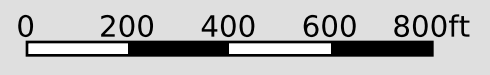
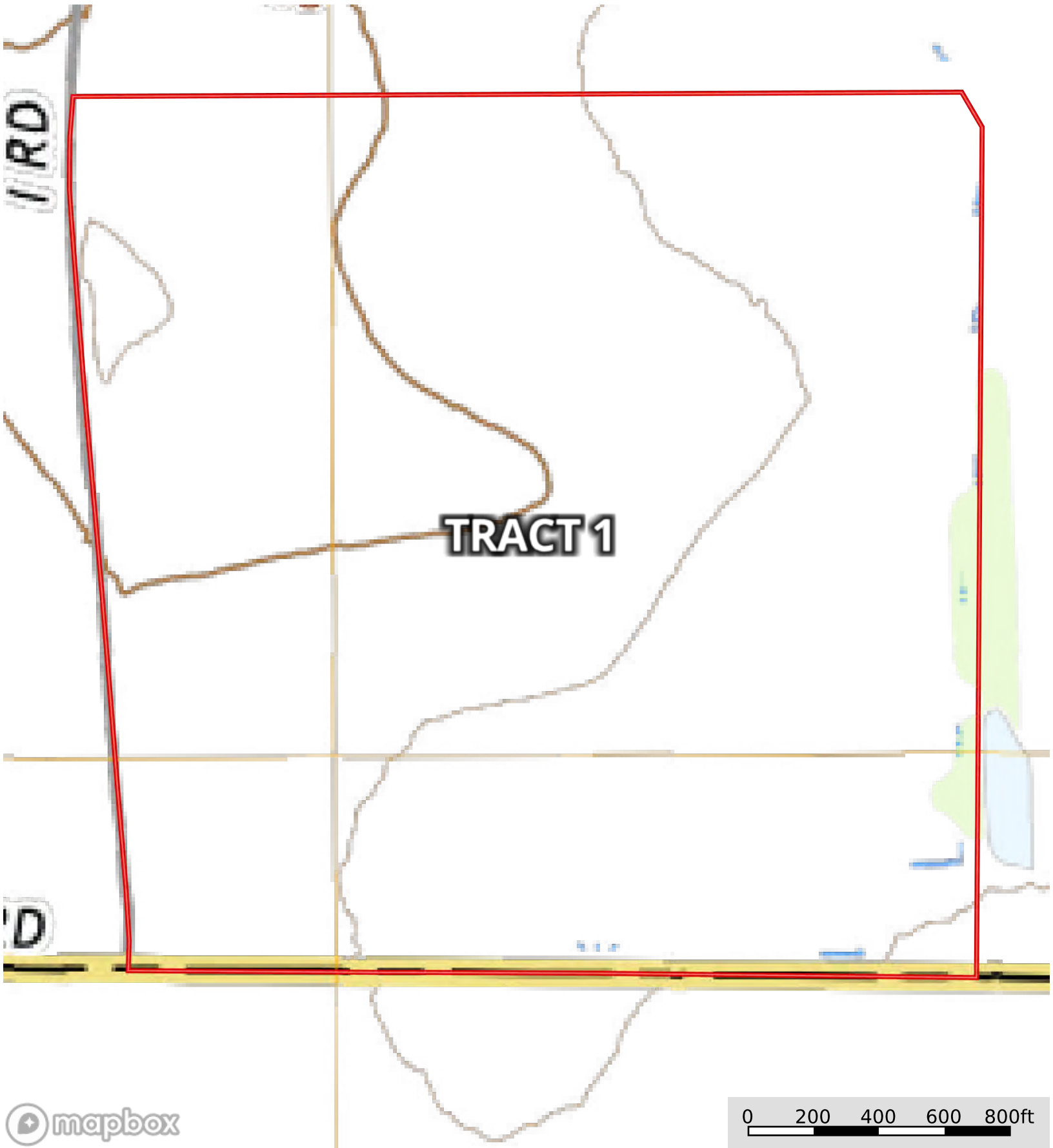


Tract 1 166.57 ac

SOIL CODE	SOIL DESCRIPTION	ACRES	%	CPI	NCCPI	CAP
2669	Holdrege silt loam, 1 to 3 percent slopes, eroded	83.98	50.42	0	69	2e
3910	Scott silt loam, frequently ponded	43.66	26.21	0	27	4w
2667	Holdrege silt loam, 0 to 1 percent slopes	27.86	16.73	0	80	2e
3820	Butler silt loam, 0 to 1 percent slopes	7.55	4.53	0	70	2w
3726	Detroit silt loam, 0 to 1 percent slopes	3.52	2.11	0	66	2c
TOTALS		166.57(*)	100%	-	59.81	2.52

(\*) Total acres may differ in the second decimal compared to the sum of each acreage soil. This is due to a round error because we only show the acres of each soil with two decimal.





 Tract 1



**TRACT 2**



Tract 2





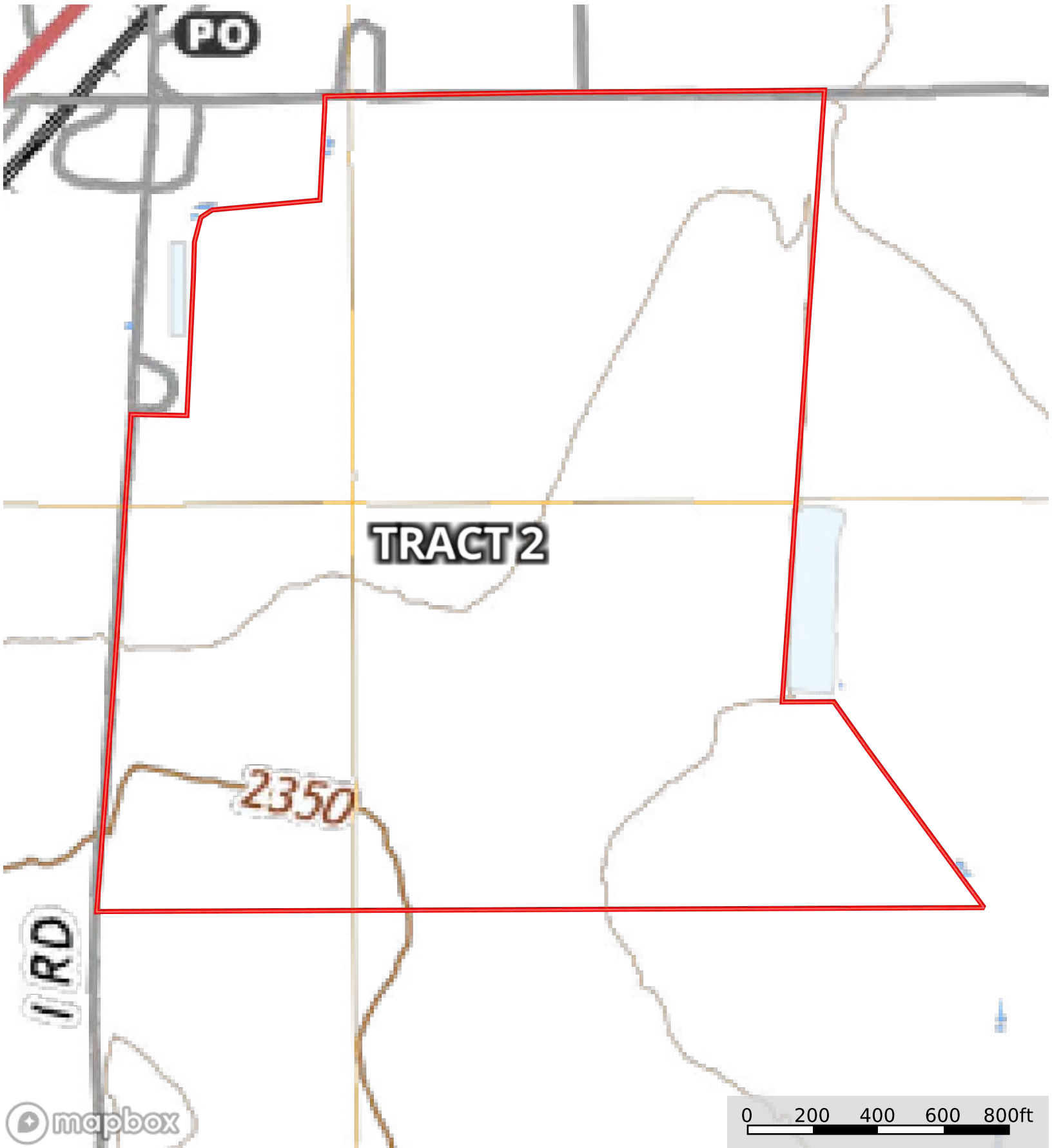
Tract 2

Tract 2 117.3 ac

SOIL CODE	SOIL DESCRIPTION	ACRES	%	CPI	NCCPI	CAP
2669	Holdrege silt loam, 1 to 3 percent slopes, eroded	65.79	56.08	0	69	2e
2667	Holdrege silt loam, 0 to 1 percent slopes	20.49	17.47	0	80	2e
3910	Scott silt loam, frequently ponded	18.18	15.5	0	27	4w
3726	Detroit silt loam, 0 to 1 percent slopes	8.91	7.6	0	66	2c
2668	Holdrege silt loam, 1 to 3 percent slopes	3.75	3.2	0	79	2e
3820	Butler silt loam, 0 to 1 percent slopes	0.18	0.15	0	70	2w
TOTALS		117.3(*)	100%	-	64.5	2.31

(\*) Total acres may differ in the second decimal compared to the sum of each acreage soil. This is due to a round error because we only show the acres of each soil with two decimal.





 Tract 2