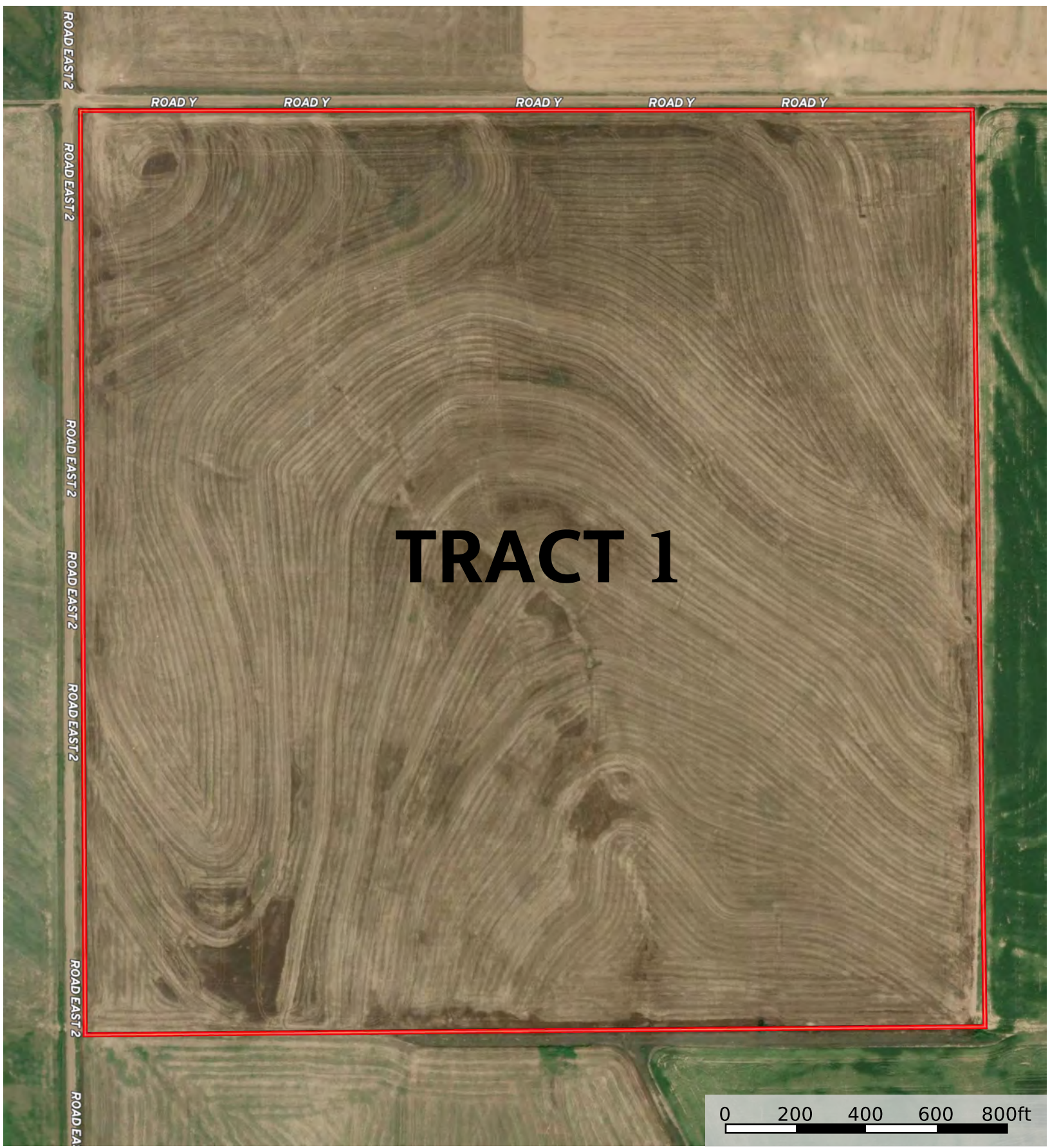


- 158 . 56 acres
- 156 . 16 Acres
- 153 . 5 Acres
- 152 Acres
- 79 . 8 Acres





# TRACT 1

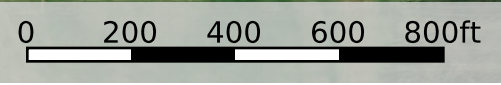



 153 . 5 Acres



# TRACT 1

2674



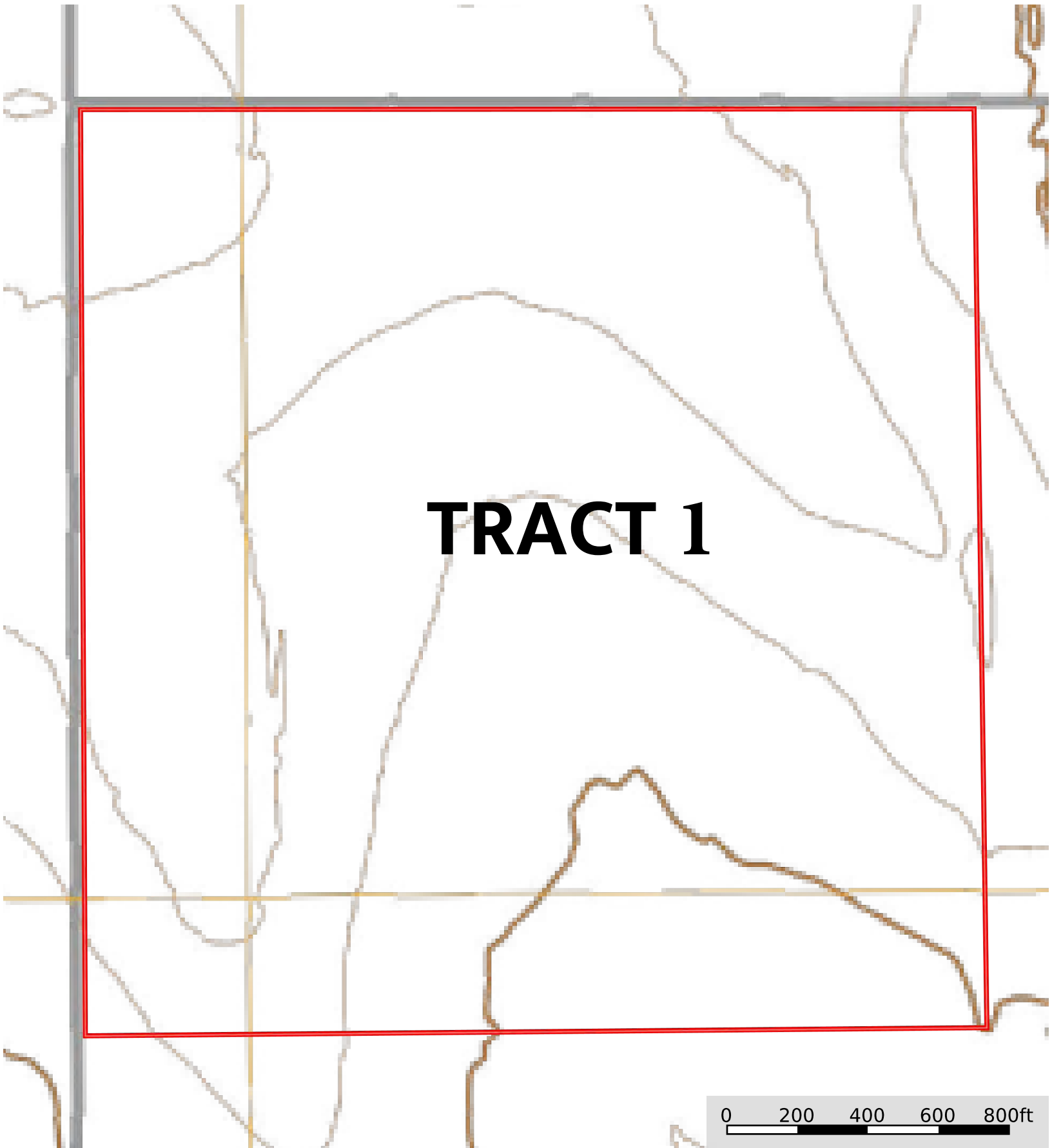
 153 . 5 Acres

| 153.5 Acres 153.33 ac

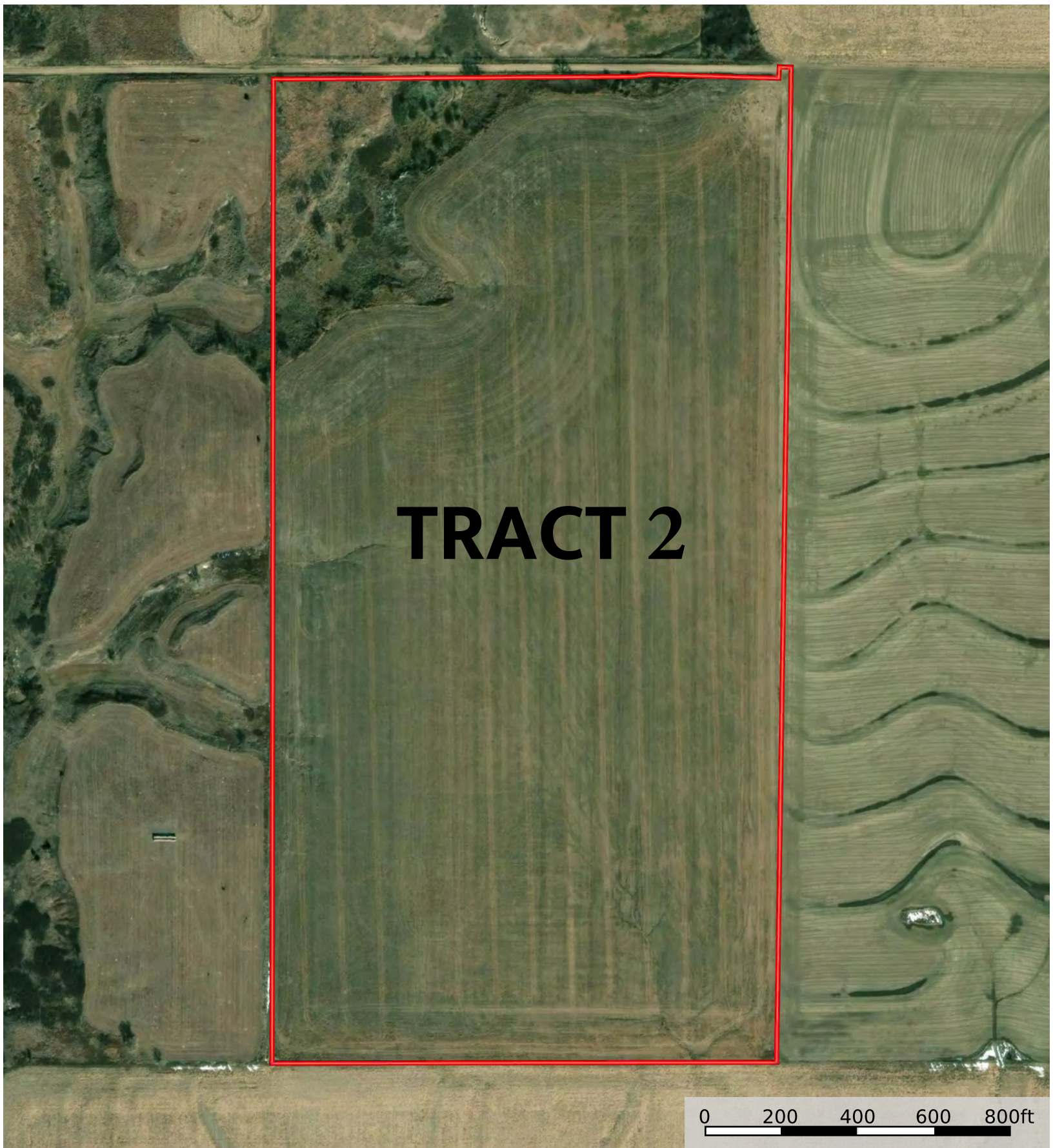
SOIL CODE	SOIL DESCRIPTION	ACRES	%	CPI	NCCPI	CAP
2674	Holdrege silt loam, 1 to 3 percent slopes, plains and breaks	153.33	100	0	76	2e
TOTALS		153.33(*)	100%	-	76.0	2

(\*) Total acres may differ in the second decimal compared to the sum of each acreage soil. This is due to a round error because we only show the acres of each soil with two decimal.






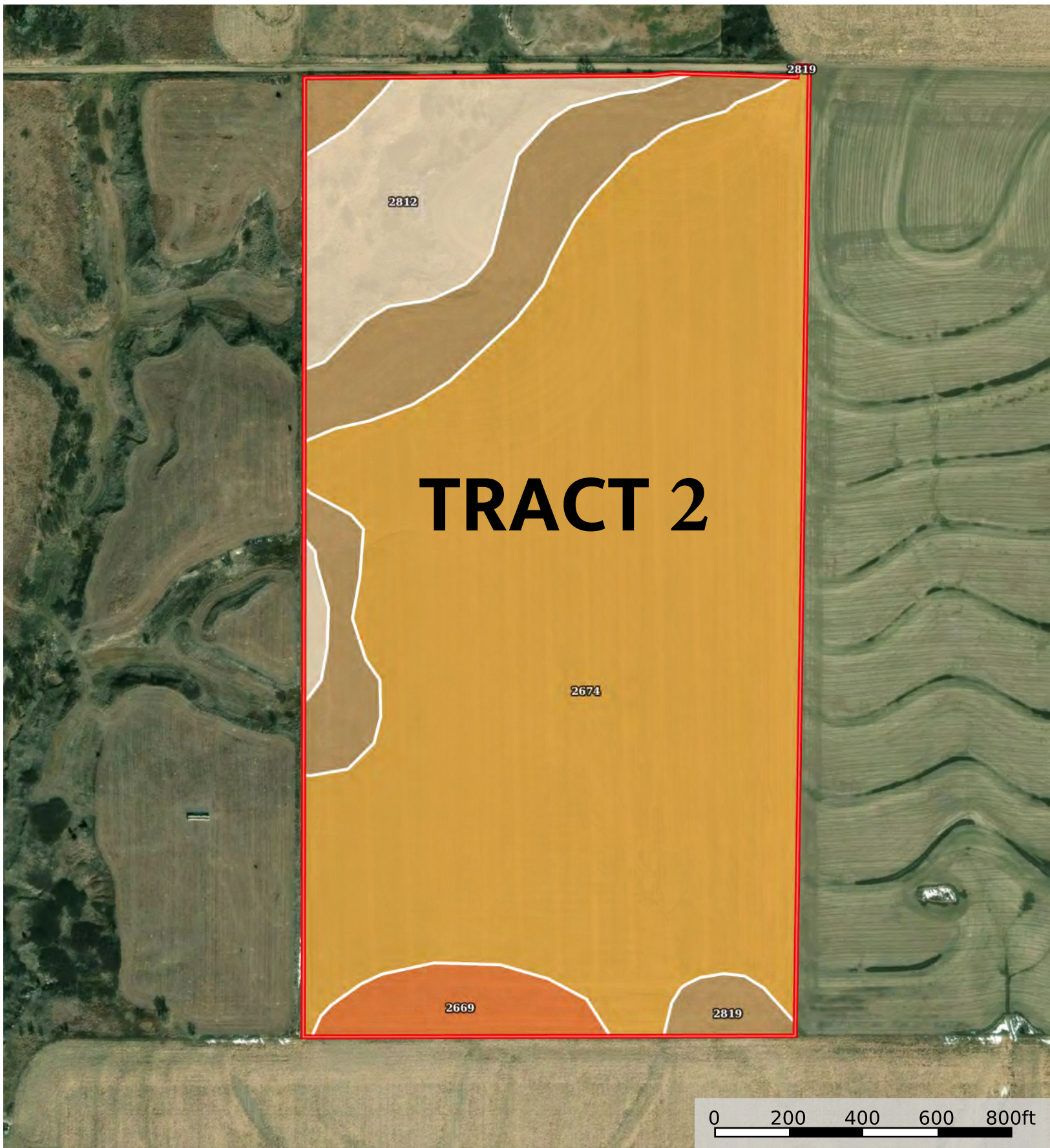
 153 . 5 Acres



# TRACT 2

0 200 400 600 800ft

 79.8 Acres



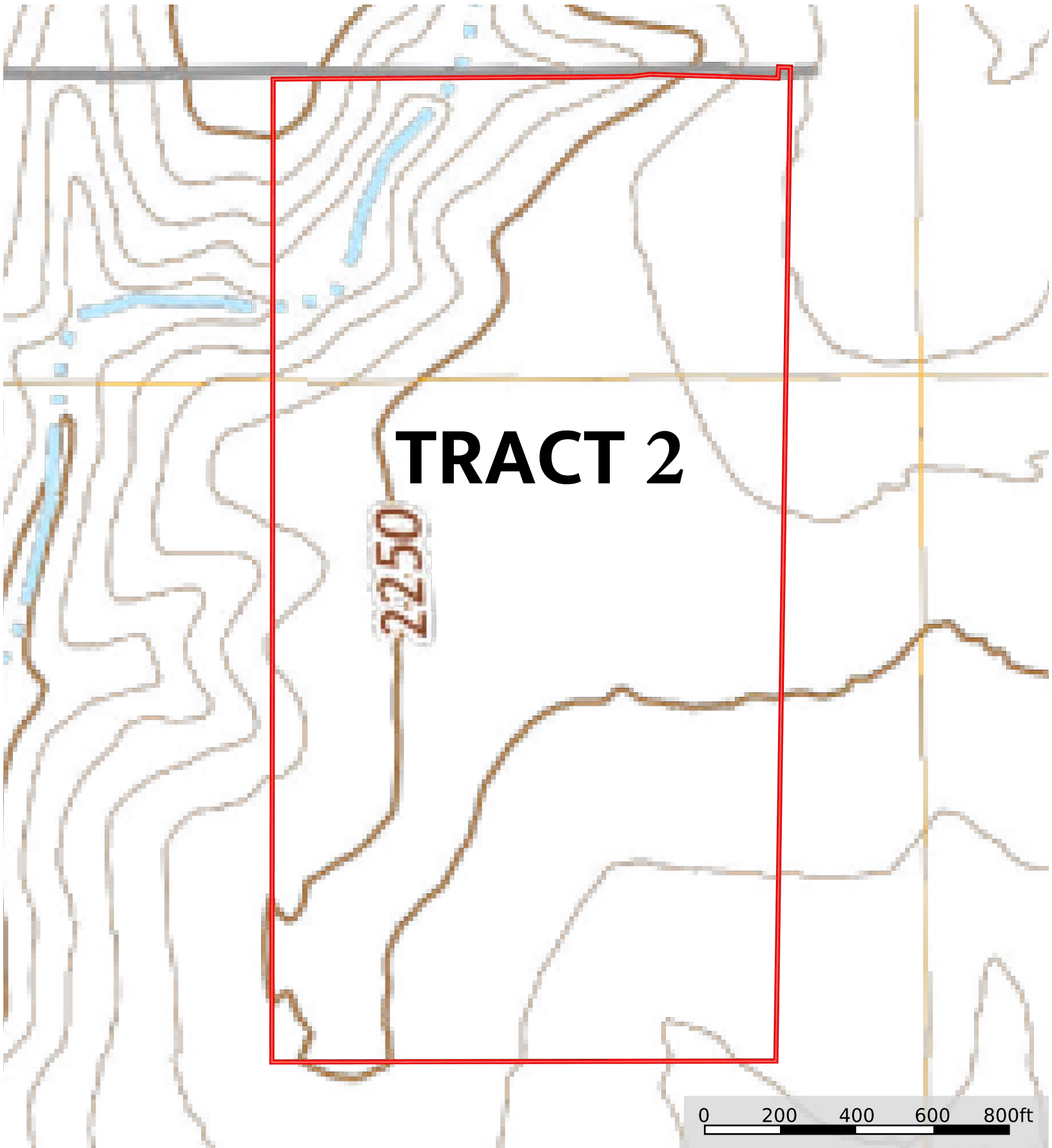
79.8 Acres


79.8 Acres 79.75 ac

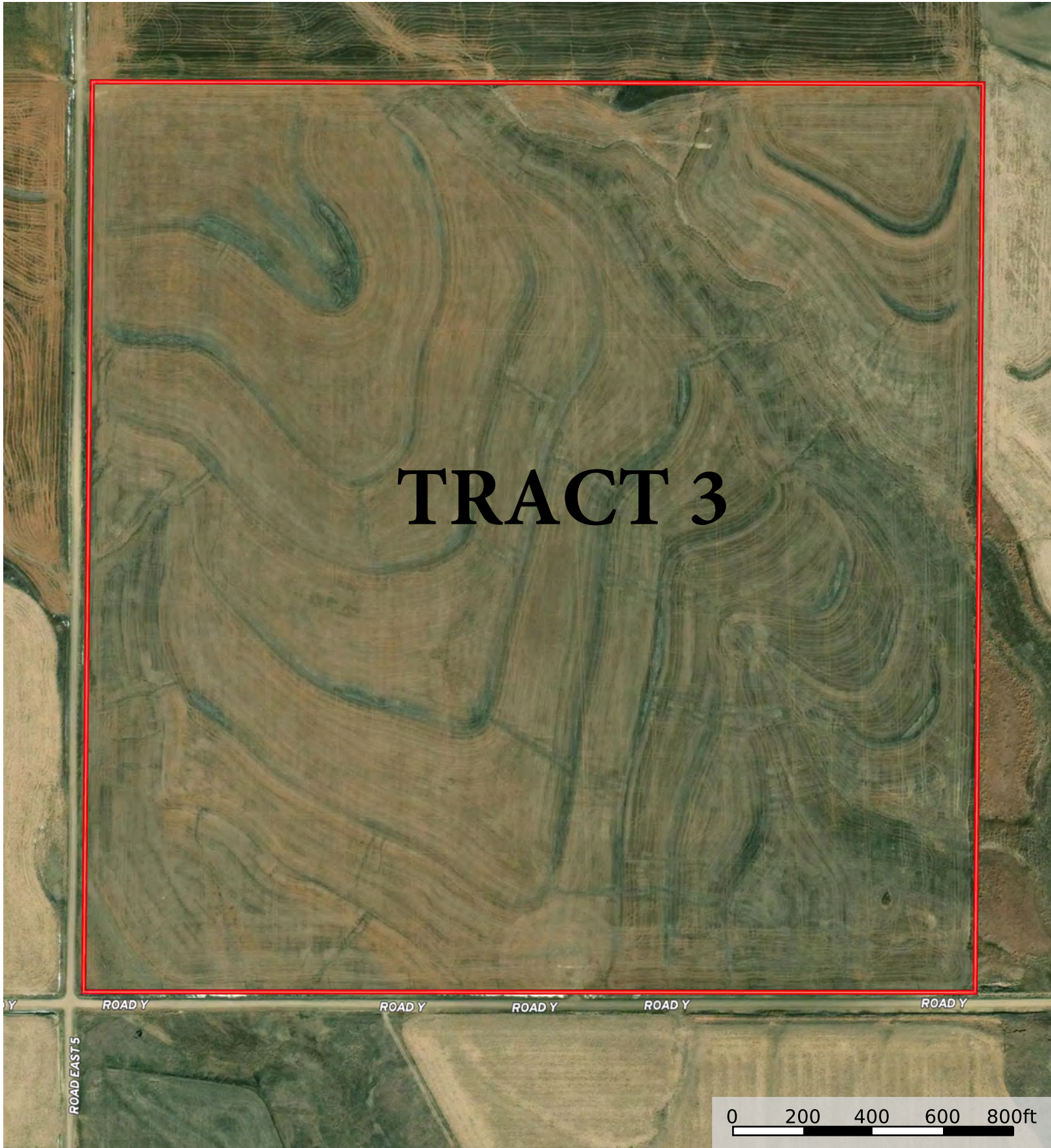
SOIL CODE	SOIL DESCRIPTION	ACRES	%	CPI	NCCPI	CAP
2674	Holdrege silt loam, 1 to 3 percent slopes, plains and breaks	57.94	72.66	0	76	2e
2819	Uly silt loam, 6 to 11 percent slopes	10.53	13.21	0	74	4e
2812	Uly silt loam, 10 to 20 percent slopes	8.52	10.68	0	66	6e
2669	Holdrege silt loam, 1 to 3 percent slopes, eroded	2.76	3.46	0	69	2e
TOTALS		79.75(*)	100%	-	74.43	2.69


(\*) Total acres may differ in the second decimal compared to the sum of each acreage soil. This is due to a round error because we only show the acres of each soil with two decimal.





 79.8 Acres



 152 Acres



# TRACT 3

2819

2578

2674

2578

2812

2819

ROAD Y

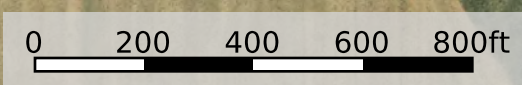
ROAD Y

ROAD Y

ROAD Y

ROAD Y

ROAD EASTS

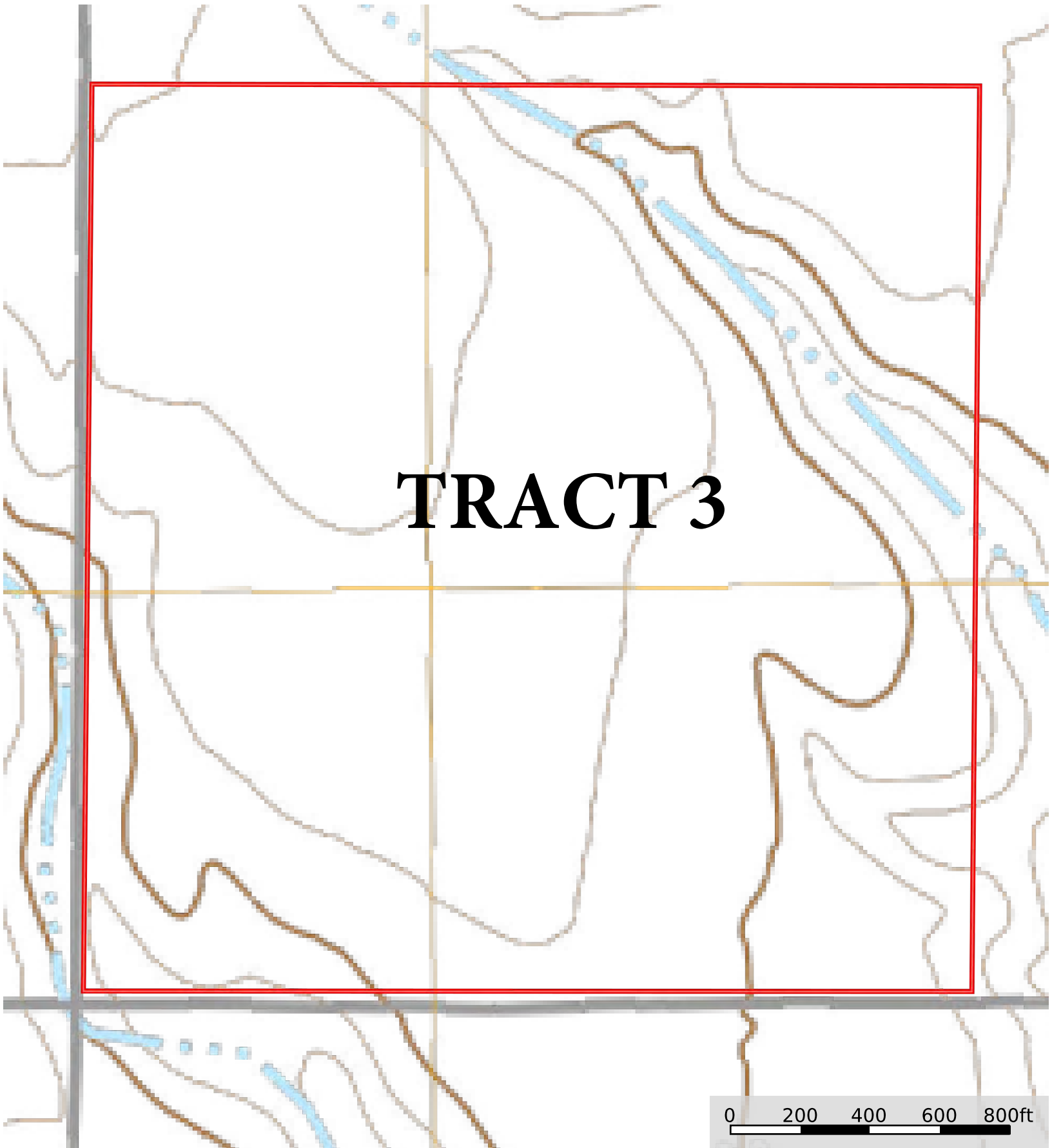


152 Acres

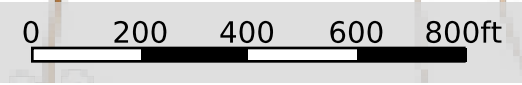
SOIL CODE	SOIL DESCRIPTION	ACRES	%	CPI	NCCPI	CAP
2674	Holdrege silt loam, 1 to 3 percent slopes, plains and breaks	111.6 1	73.48	0	76	2e
2578	Coly and Uly silt loams, 6 to 10 percent slopes, eroded	38.31	25.22	0	63	4e
2812	Uly silt loam, 10 to 20 percent slopes	1.65	1.09	0	66	6e
2819	Uly silt loam, 6 to 11 percent slopes	0.33	0.22	0	74	4e
TOTALS		151.9(*)	100%	-	72.61	2.55

(\*) Total acres may differ in the second decimal compared to the sum of each acreage soil. This is due to a round error because we only show the acres of each soil with two decimal.

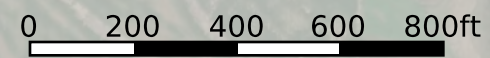
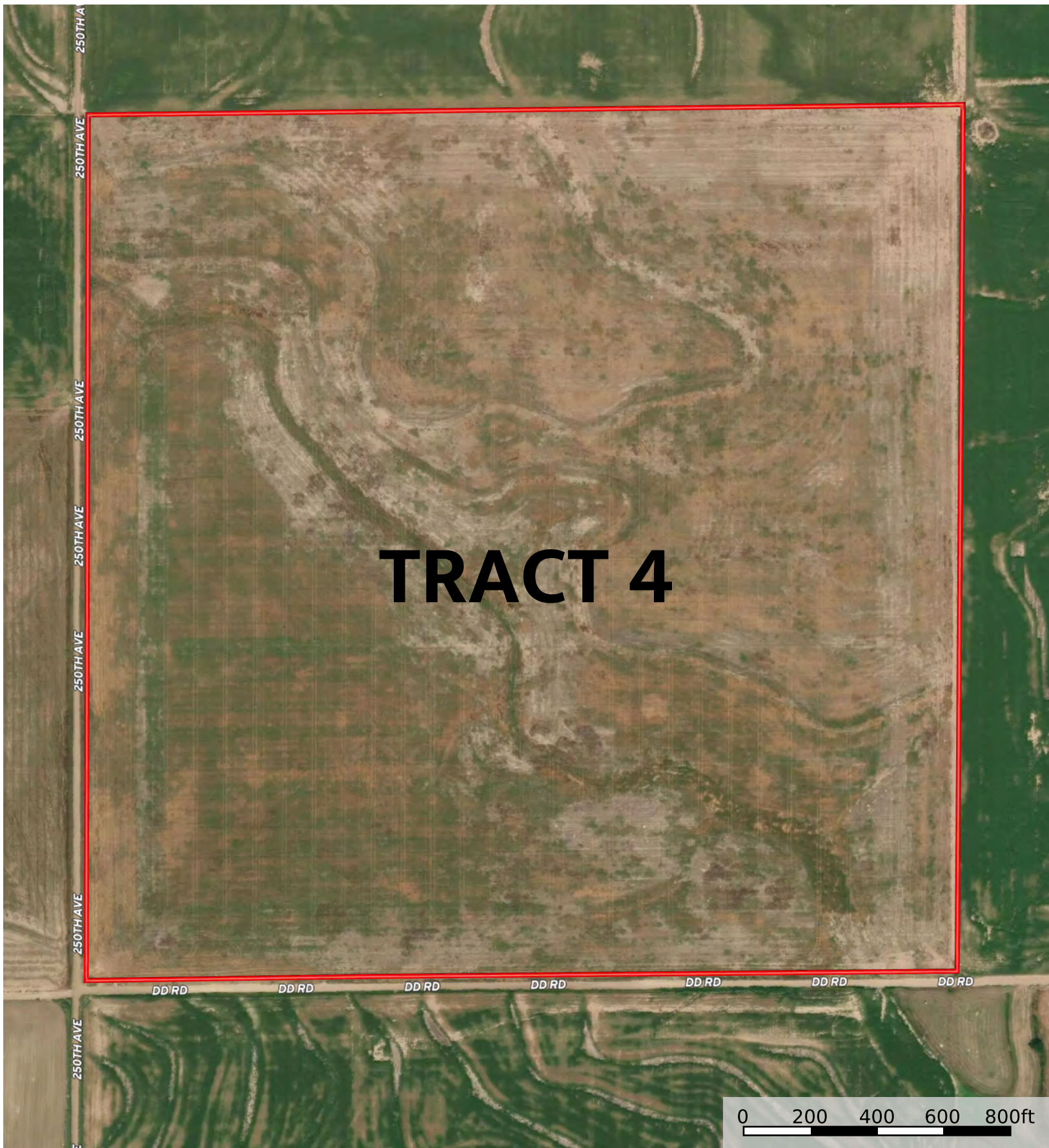




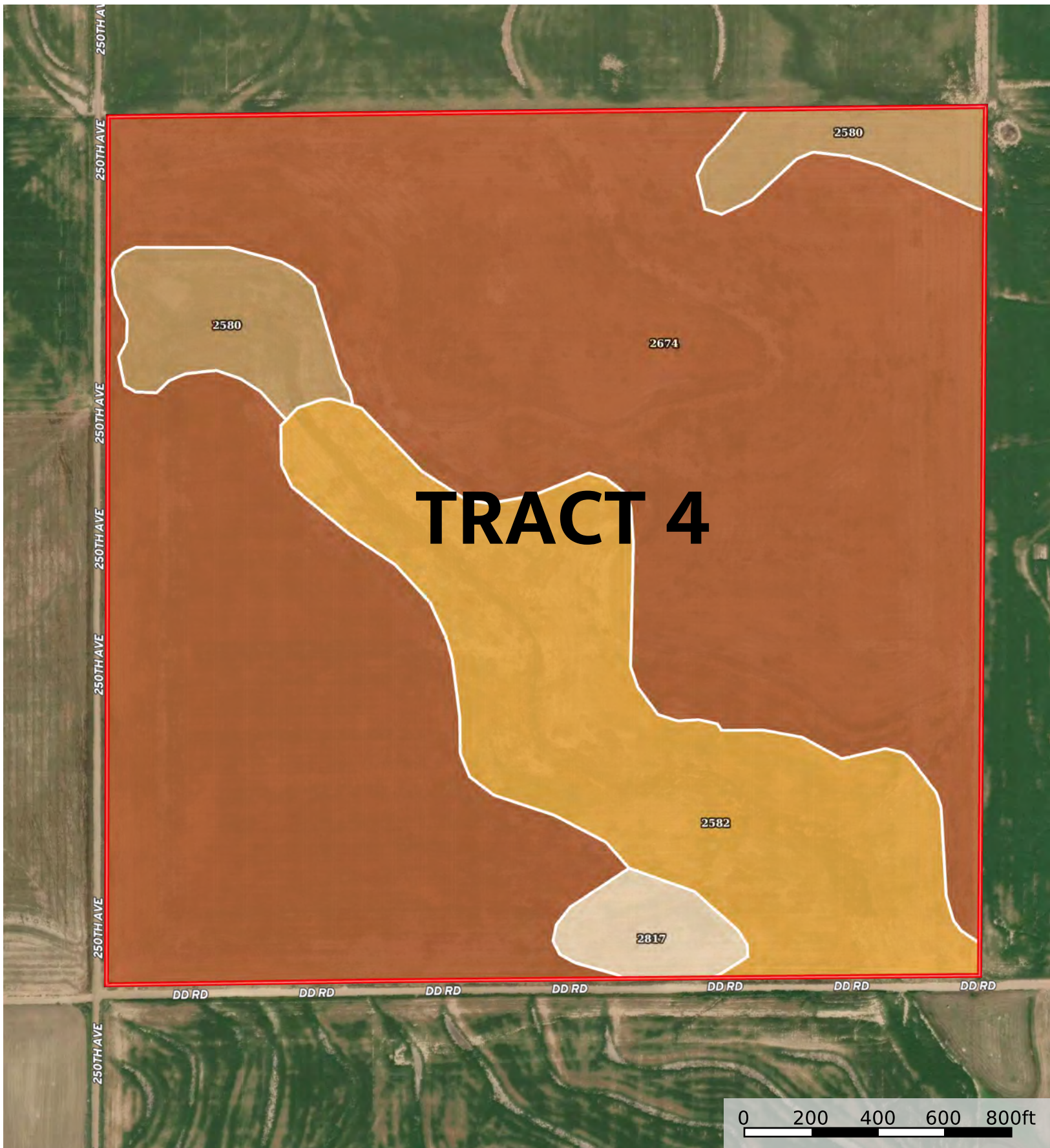
# TRACT 3



 152 Acres



156 . 16 Acres



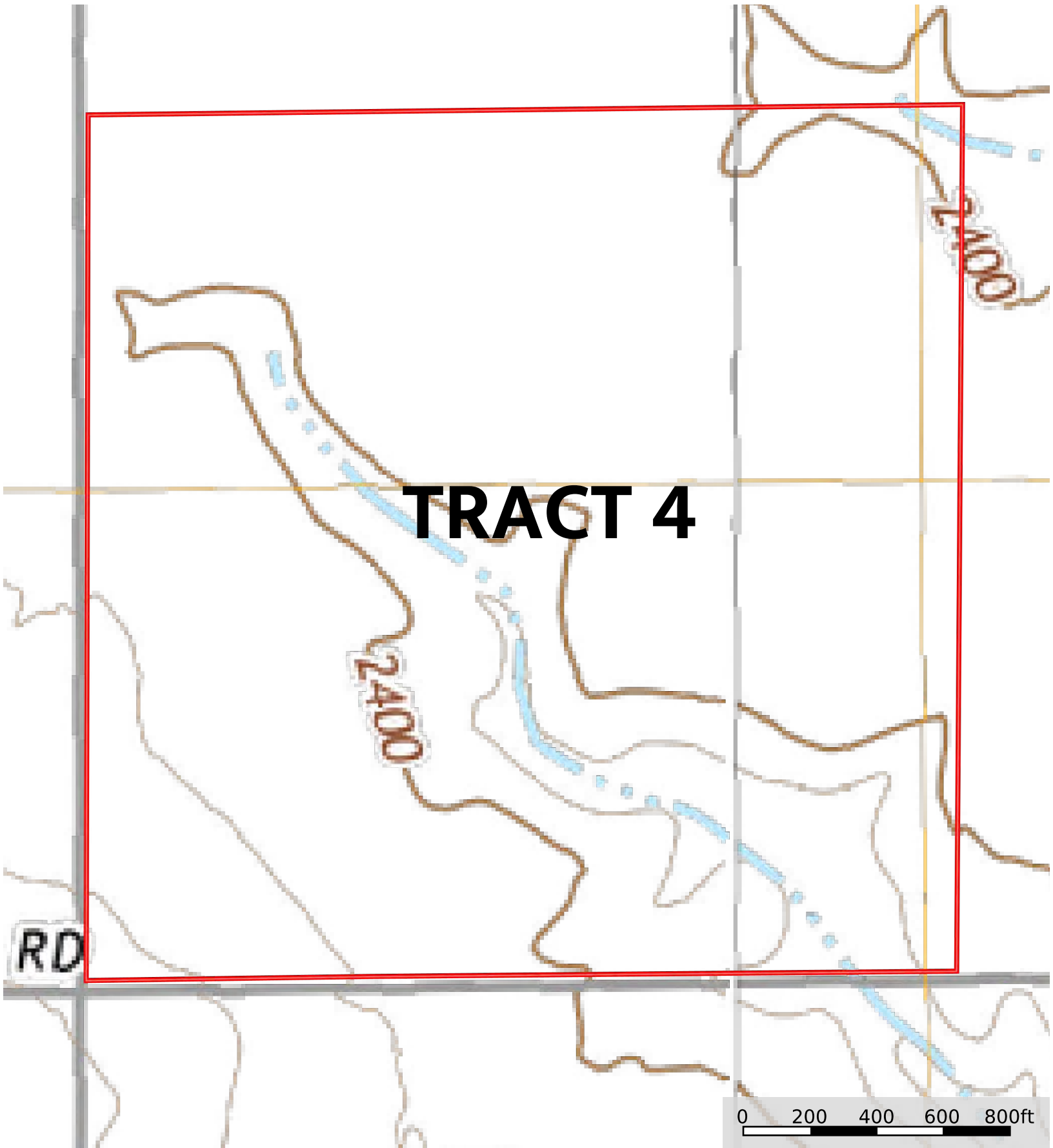
156 . 16 Acres

156.16 Acres 156.02 ac

SOIL CODE	SOIL DESCRIPTION	ACRES	%	CPI	NCCPI	CAP
2674	Holdrege silt loam, 1 to 3 percent slopes, plains and breaks	113.47	72.73	0	76	2e
2582	Coly silt loam, 6 to 20 percent slopes	29.69	19.03	0	59	4e
2580	Coly silt loam, 3 to 6 percent slopes	9.81	6.29	0	71	3e
2817	Uly silt loam, 3 to 6 percent slopes	3.05	1.95	0	76	3e
TOTALS		156.02(*)	100%	-	72.45	2.46

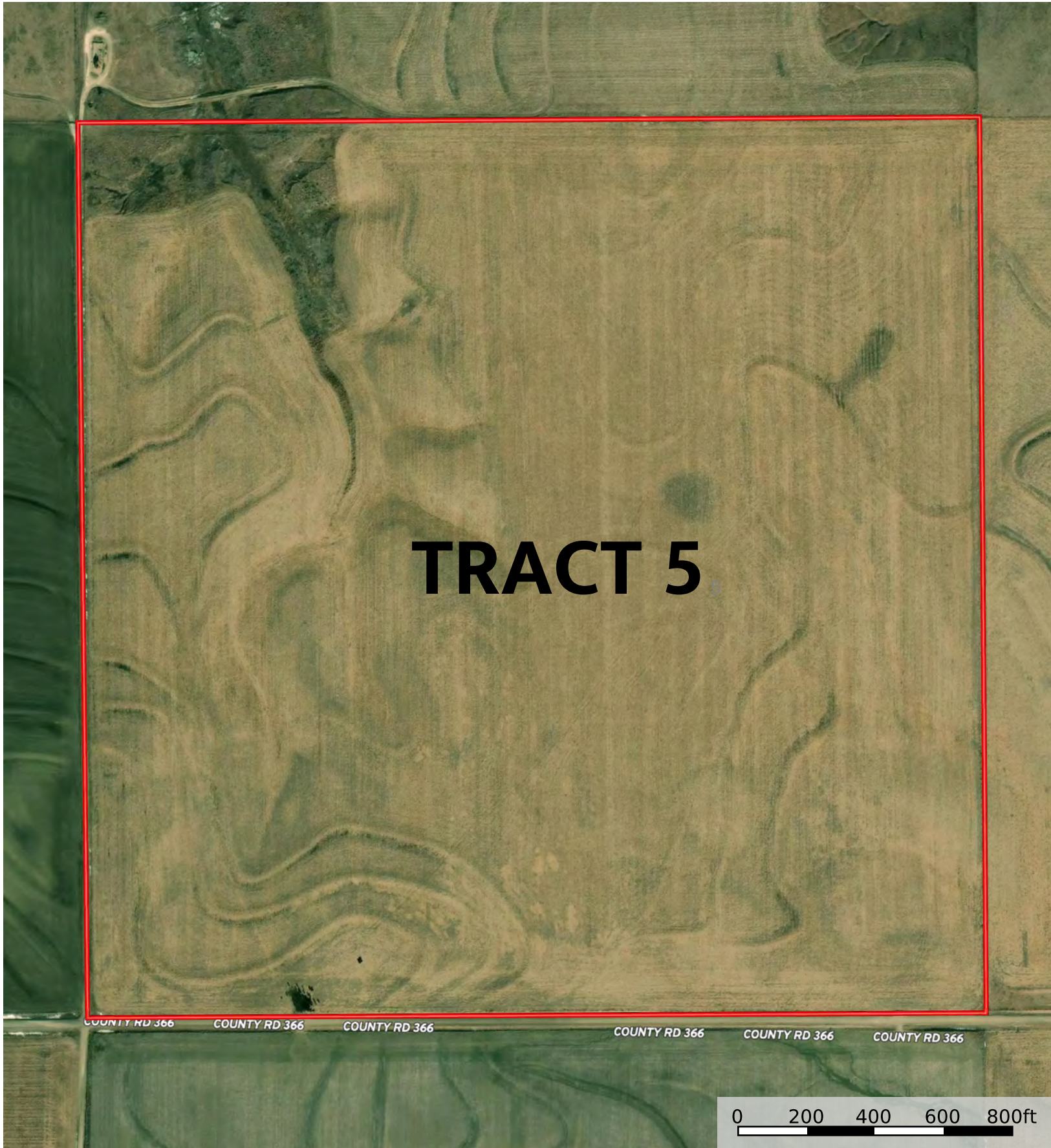
(\*) Total acres may differ in the second decimal compared to the sum of each acreage soil. This is due to a round error because we only show the acres of each soil with two decimal.





# TRACT 4

 156 . 16 Acres

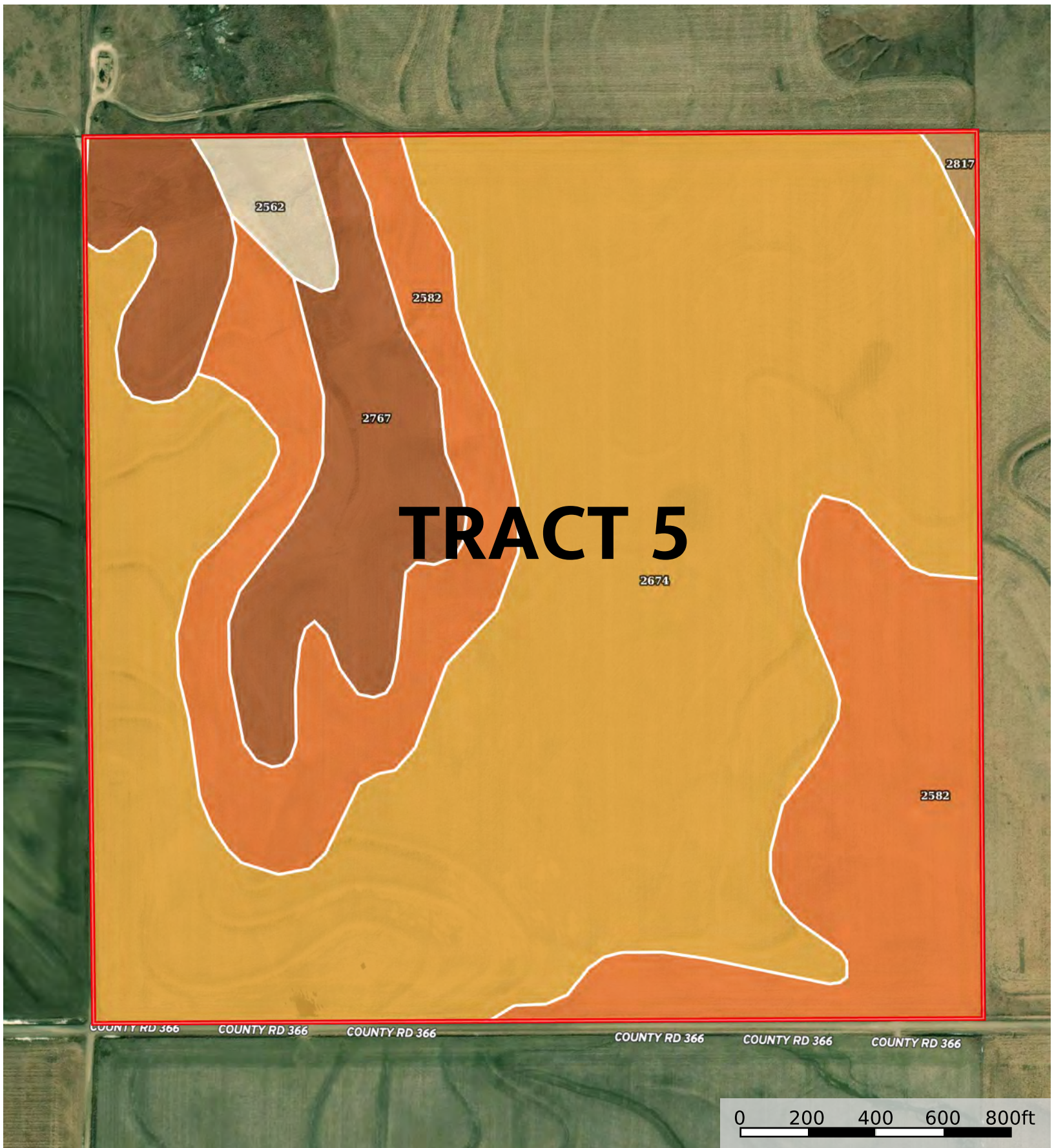


# TRACT 5

COUNTY RD 366 COUNTY RD 366 COUNTY RD 366 COUNTY RD 366 COUNTY RD 366 COUNTY RD 366

0 200 400 600 800ft

 158 . 56 acres



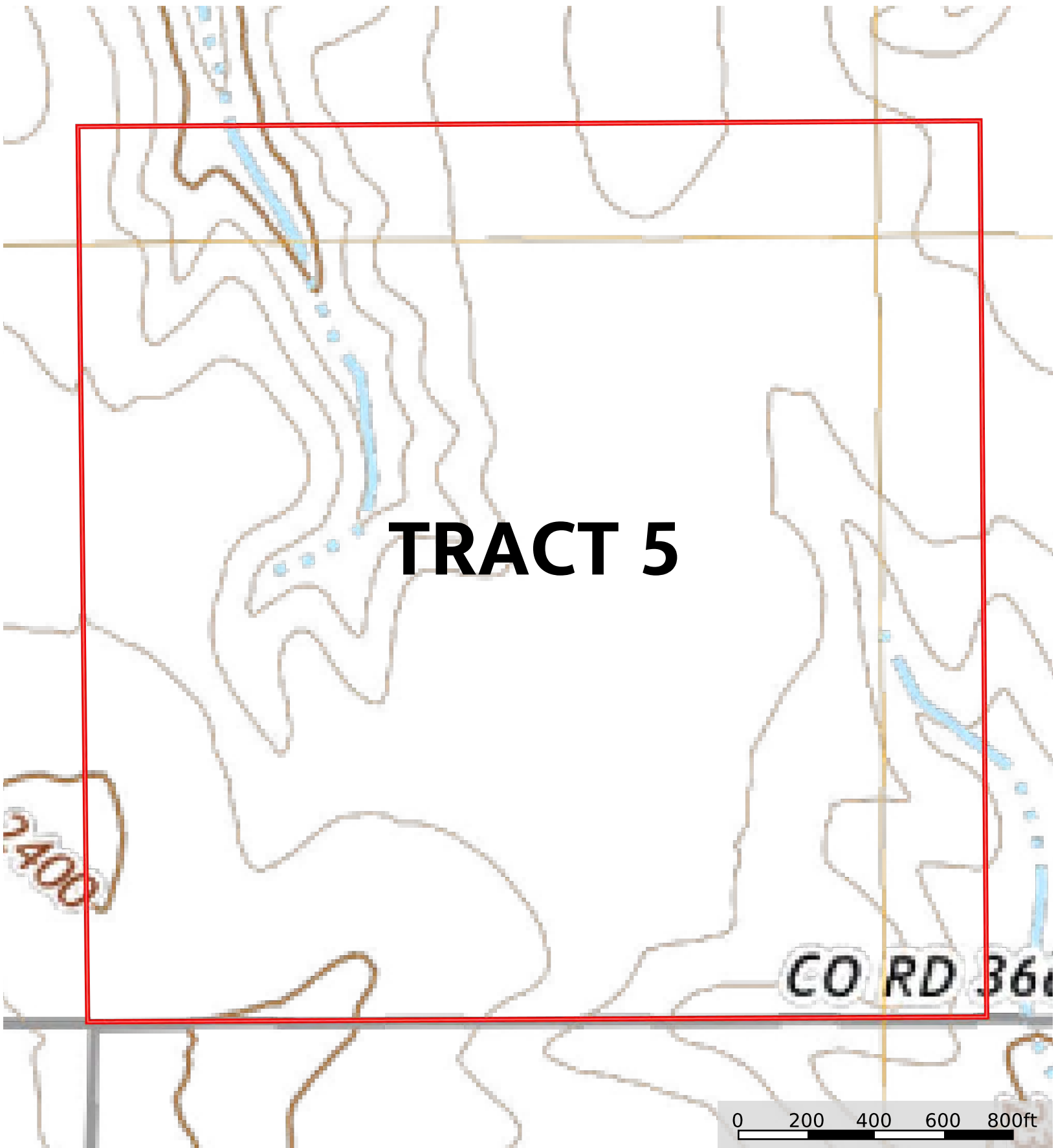
158 . 56 acres

158.56 acres 158.4 ac

SOIL CODE	SOIL DESCRIPTION	ACRES	%	CPI	NCCPI	CAP
2674	Holdrege silt loam, 1 to 3 percent slopes, plains and breaks	98.47	62.17	0	76	2e
2582	Coly silt loam, 6 to 20 percent slopes	38.26	24.15	0	59	4e
2767	Penden-Uly complex, 7 to 20 percent slopes	18.5	11.68	0	63	6e
2562	Campus-Canlon complex, 3 to 30 percent slopes	2.59	1.64	0	35	6e
2817	Uly silt loam, 3 to 6 percent slopes	0.58	0.37	0	76	3e
TOTALS		158.4(*)	100%	-	69.71	3.02

(\*) Total acres may differ in the second decimal compared to the sum of each acreage soil. This is due to a round error because we only show the acres of each soil with two decimal.





# TRACT 5

2400

CO RD 36



158 . 56 acres