

FOR SALE

742± ACRES OF GRASS

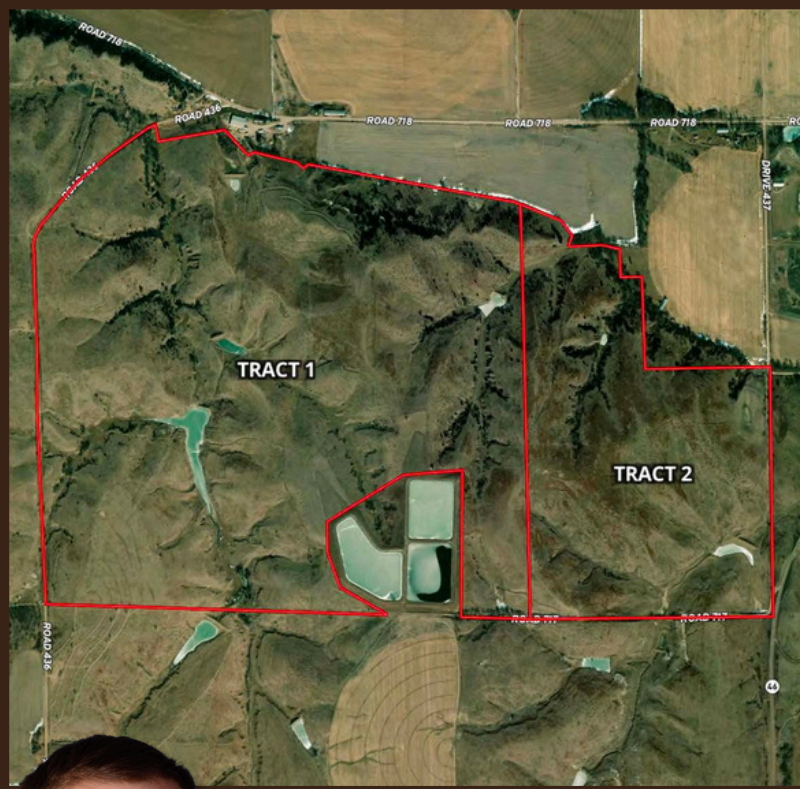
RECREATIONAL OR
HUNTING PROPERTY

FURNAS COUNTY, NE

OFFERED IN 2 TRACTS
OR IN COMBINATION

LIES JUST ONE MILE
SOUTH OF THE
REPUBLICAN RIVER!

Asking
\$2,750
per acre
\$2,040,500



Here is an excellent opportunity to add 700+ acres of grass to your land holdings. These would be nice tracts for recreational use or hunting! Each tract has one water well and several ponds and dams that provide ample water for wildlife. Good gravel roads allow for year round access. These properties carry abundant wildlife as they lay less than a mile south of the Republican River. These would also be great pastures! If you are looking for a tract of land that checks all the boxes, look no more! Offered in two individual tracts or combination. Give Jeff Moon a phone call today with questions or offers.



JEFF MOON, ALC

Farm & Ranch Specialist
Holdrege, Nebraska

(308) 627-2630

Jeff.Moon@AgWestLand.com



PO BOX 1098 | HOLDREGE, NE 68949 | AGWESTLAND.COM | 308.995.8067



PROPERTY DIRECTIONS

From Oxford, NE travel south on Hwy 46 one mile to Road 718. Then head west one mile and the property will be on the south side of Road 718.

LEGAL DESCRIPTION

Tract 1: NE1/4, NE1/4 of NW1/4, S1/2 of NW1/4, Pt. NW1/4 of NW1/4 & Pt. S1/2 S14-T3-R21.

Tract 2: SW1/4, Pt SW1/4 of NW1/4 S13-T3-R21; Pt. NW1/4 of NW1/4 S13-T3-R21. All in Furnas County, NE (Acreage with house and buildings and cropland not included)

TOTAL ACRES (Tract 1): 535+/-

TOTAL ACRES (Tract 2): 207+/-

PROPERTY TAXES (2025, estimated)

Tract 1: \$7,291.78

Tract 2: \$1,508.42

CRP CONTRACTS (expire 9/30/34)

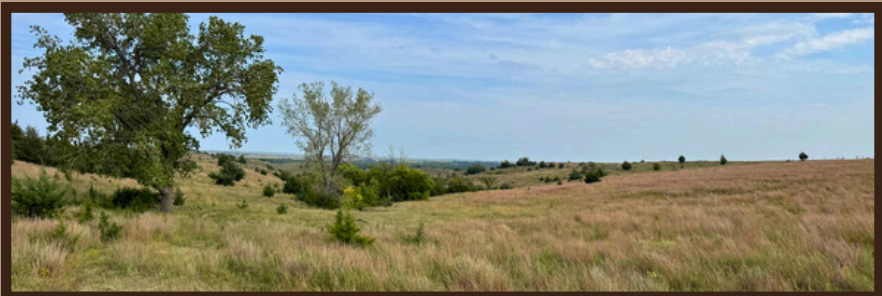
192.75 CRP Acres - \$4,164 Annual Payment

515.25 CRP Acres - \$11,130 Annual Payment

Perimeter Fences on the property are in fair to good condition.

*All mineral rights owned by Seller, if any, convey to Buyer.

*There is a lease on the grass for the 2026 season.



The information contained herein is as obtained by AgWest Land Brokers LLC—Holdrege, NE from the owner and other sources. Even though this information is considered reliable, neither broker nor owner make any guarantee, warranty or representation as to the correctness of any data or descriptions. The accuracy of such statements should be determined through independent investigation made by the prospective purchaser. This offer for sale is subject to prior sale, errors and omissions, change of price, terms or other conditions or withdrawal from sale in whole or in part, by seller without notice and at the sole discretion of seller. Readers are urged to form their own independent conclusions and evaluations in consultation with legal counsel, accountants, and/or investment advisors concerning any and all material contained herein. Maps are for illustrative purposes only and are not intended to represent actual property lines.