



FOR SALE

***OFFERED AT
\$1,200,000***



ATLANTA, NE

TURN-KEY GRAIN FACILITY

800,000 +/- BUSHEL STORAGE

***IMMEDIATE POSSESSION UPON CLOSING**



Jeff Moon, ALC

**FARM & RANCH SPECIALIST
HOLDREGE, NEBRASKA
(308) 627-2630**

JEFF.MOON@AGWESTLAND.COM



TOTAL ACRES

5.16 +/-

LEGAL DESCRIPTION

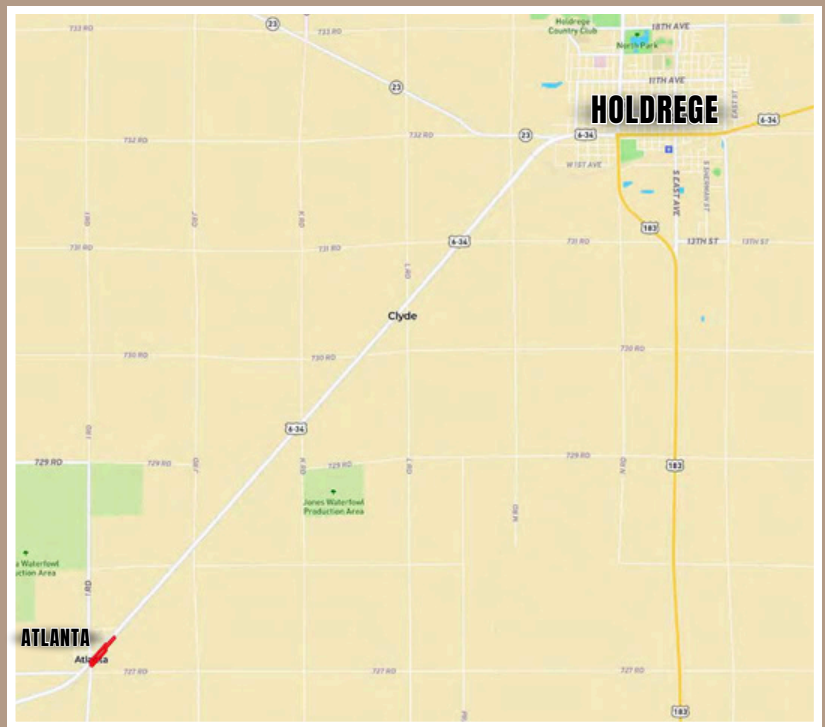
Atlanta Land inside Pt. SW $\frac{1}{4}$
of Section 27, Township 5
North, Range 19 West

PROPERTY TAXES

\$6,801.52

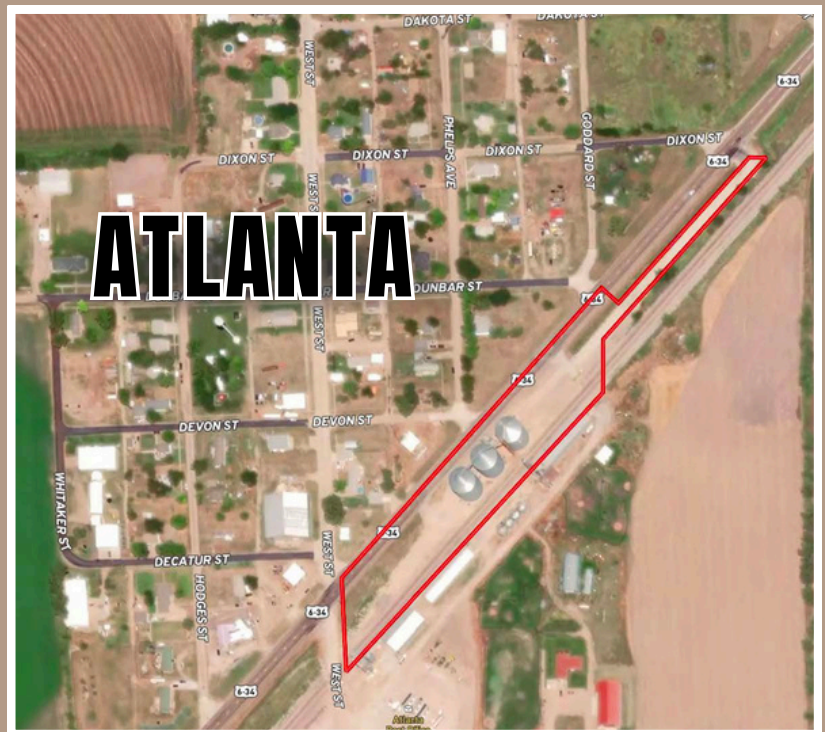
INCLUDED WITH THE SALE

- 260,000 Grain Bin (1979)
- 250,000 Grain Bin (2003)
- 260,000 Grain Bin (2007)
- 3,600 Hopper Bottom Truck Loading Bin
- 120' Tall/10,000 BPH Bucket Elevator
- Upper and Lower Conveyor
- Truck Receiving Conveyor
- Apollo Zues 8012 Pitless Truck Scale
- CR Truck Probe
- Scale Shed
- Hazard Monitoring System for Elevator Leg
- Electrical System Upgrade
- Extended Concrete Receiving Pit and Conveyor
- MCI Kickers
- Landings/Guarding/Handrail/Ladder Guarding
- Perten AM 5200-A Moisture Meters



PROPERTY DIRECTIONS

Located on the south edge of
Atlanta (southwest of Holdrege).
The facility is situated along the
south side of Highway 6-34.



The information contained herein is as obtained by AgWest Land Brokers LLC—Holdrege, NE from the owner and other sources. Even though this information is considered reliable, neither broker nor owner make any guarantee, warranty or representation as to the correctness of any data or descriptions. The accuracy of such statements should be determined through independent investigation made by the prospective purchaser. This offer for sale is subject to prior sale, errors and omissions, change of price, terms or other conditions or withdrawal from sale in whole or in part, by seller without notice and at the sole discretion of seller. Readers are urged to form their own independent conclusions and evaluations in consultation with legal counsel, accountants, and/or investment advisors concerning any and all material contained herein. Maps are for illustrative purposes only and are not intended to represent actual property lines.