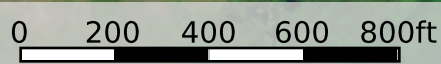


School
Number 34



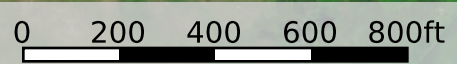
 Boundary

Platte05 Auction

Platte County, Nebraska, 160 AC +/-



 Boundary

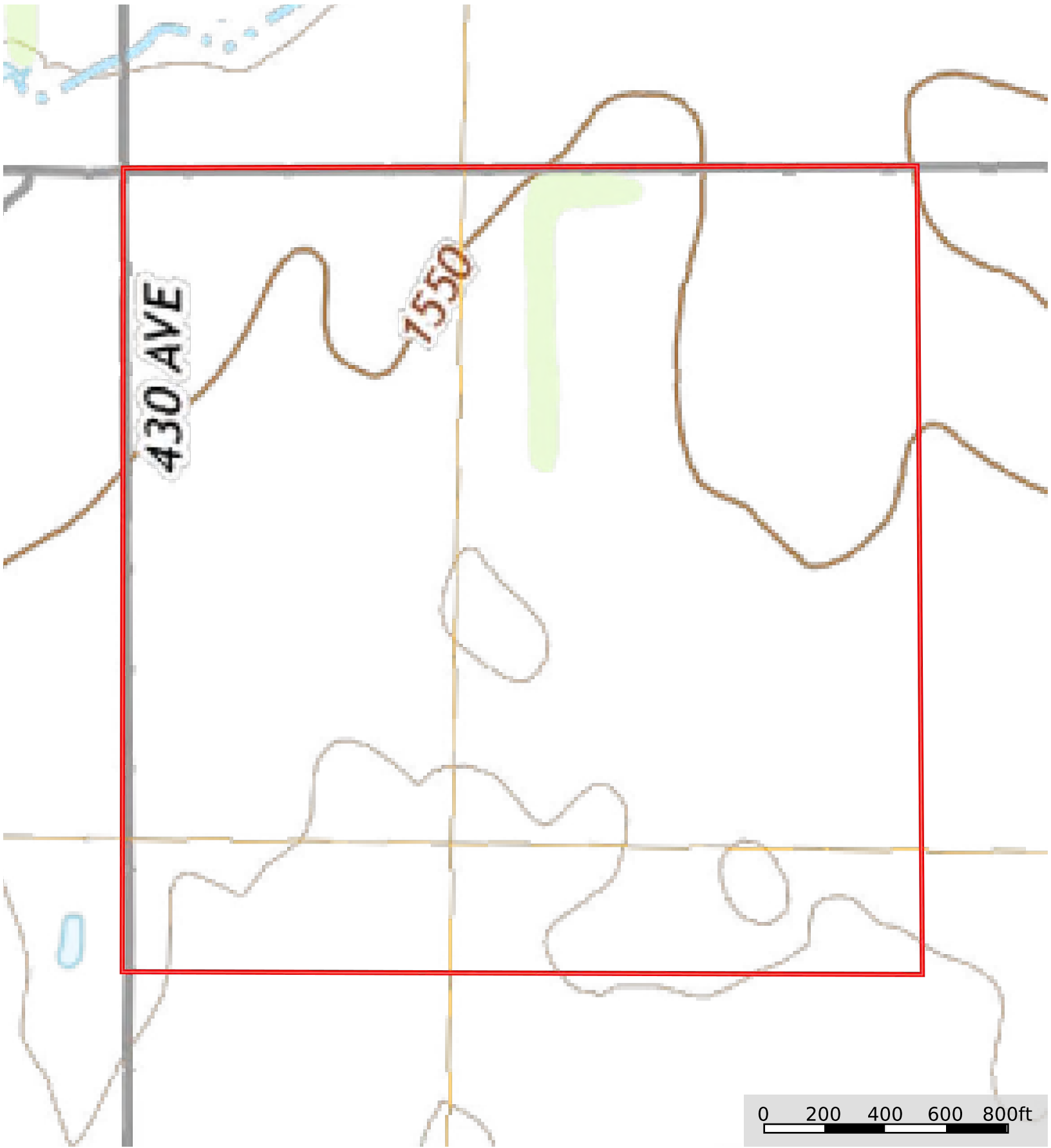


Boundary 158.78 ac

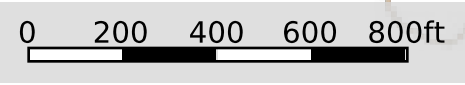
SOIL CODE	SOIL DESCRIPTION	ACRES	%	CPI	NCCPI	CAP
4886	Valentine-Thurman complex, 3 to 9 percent slopes	49.23	31.01	0	32	6e
4654	lpage-Els loamy fine sands, 0 to 3 percent slopes	40.1	25.26	0	29	4e
3260	Oneill fine sandy loam, 0 to 2 percent slopes	39.63	24.96	0	44	3e
6526	Janude loam, rarely flooded	14.59	9.19	0	67	1
2100	Boel fine sandy loam, 0 to 2 percent slopes, occasionally flooded	5.38	3.39	0	39	3w
4791	Valentine fine sand, 3 to 9 percent slopes	5.21	3.28	0	25	6e
6701	Thurman loamy fine sand, 1 to 3 percent slopes	4.64	2.92	0	39	3e
TOTALS		158.78(*)	100%	-	37.67	4.1

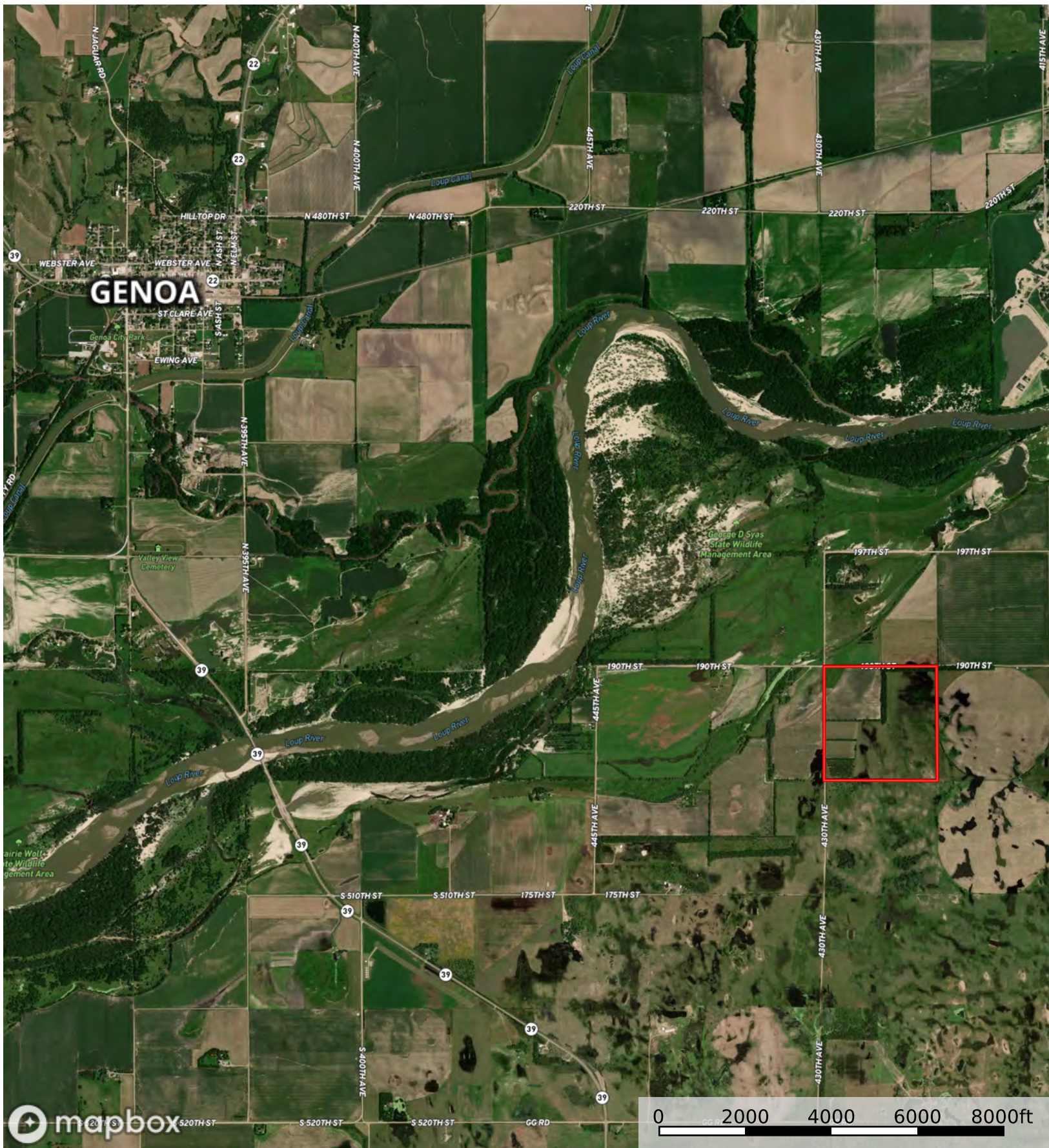
(*) Total acres may differ in the second decimal compared to the sum of each acreage soil. This is due to a round error because we only show the acres of each soil with two decimal.





 Boundary

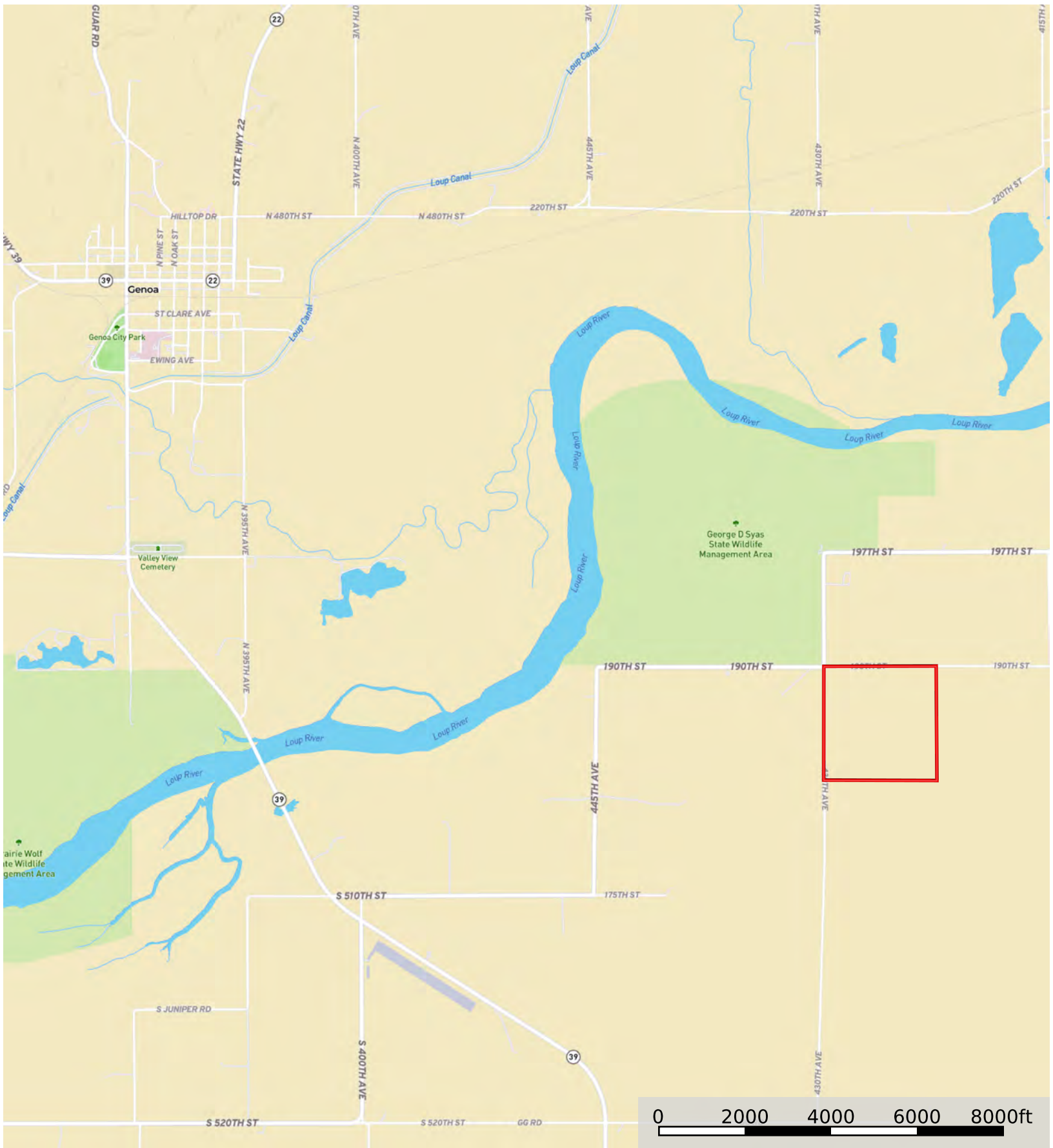




Boundary

Platte05 Auction

Platte County, Nebraska, 160 AC +/-



 Boundary