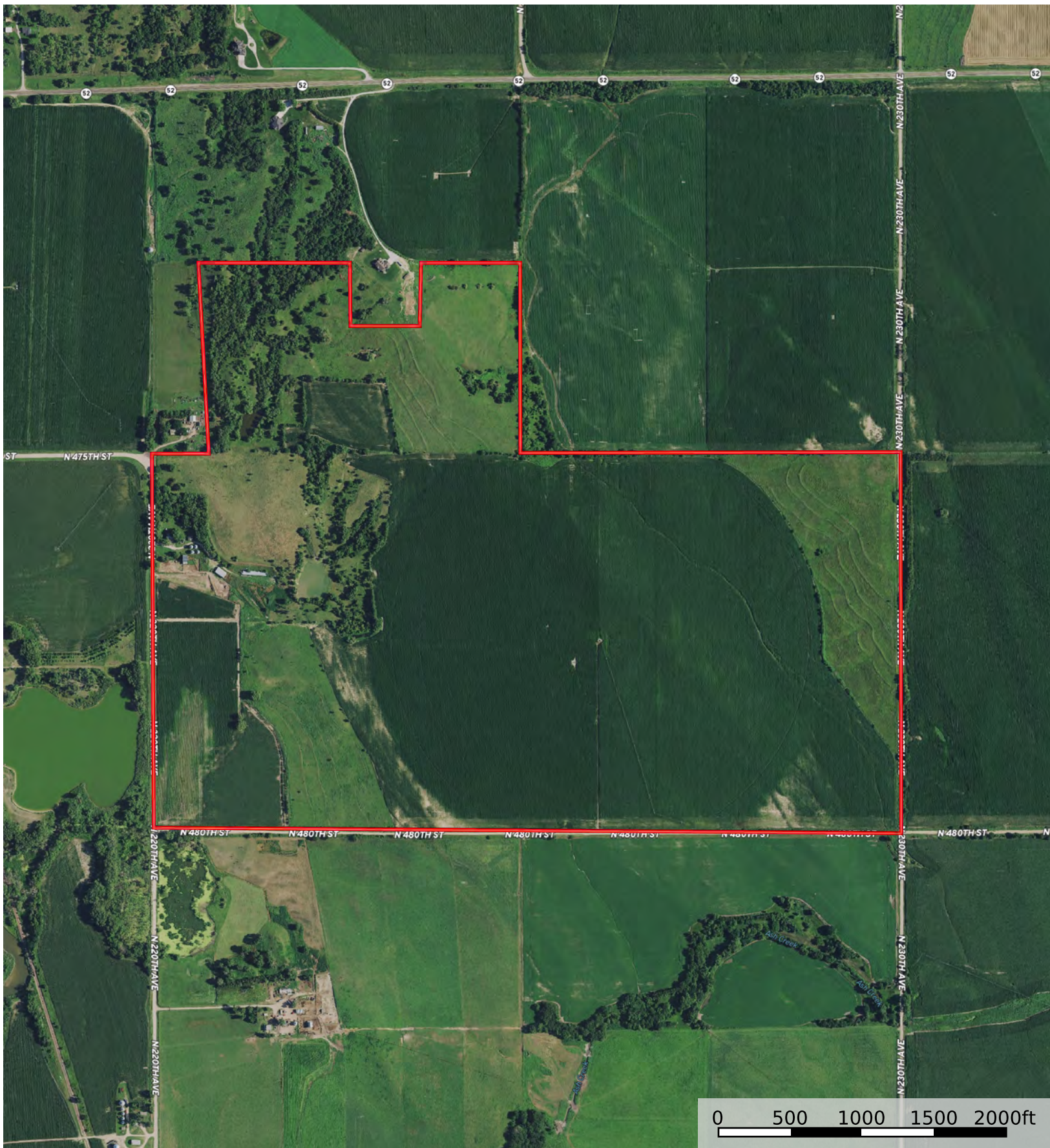


# Nance12 Tract 1

Nance County, Nebraska, 380.8 AC +/-



 Tract 1



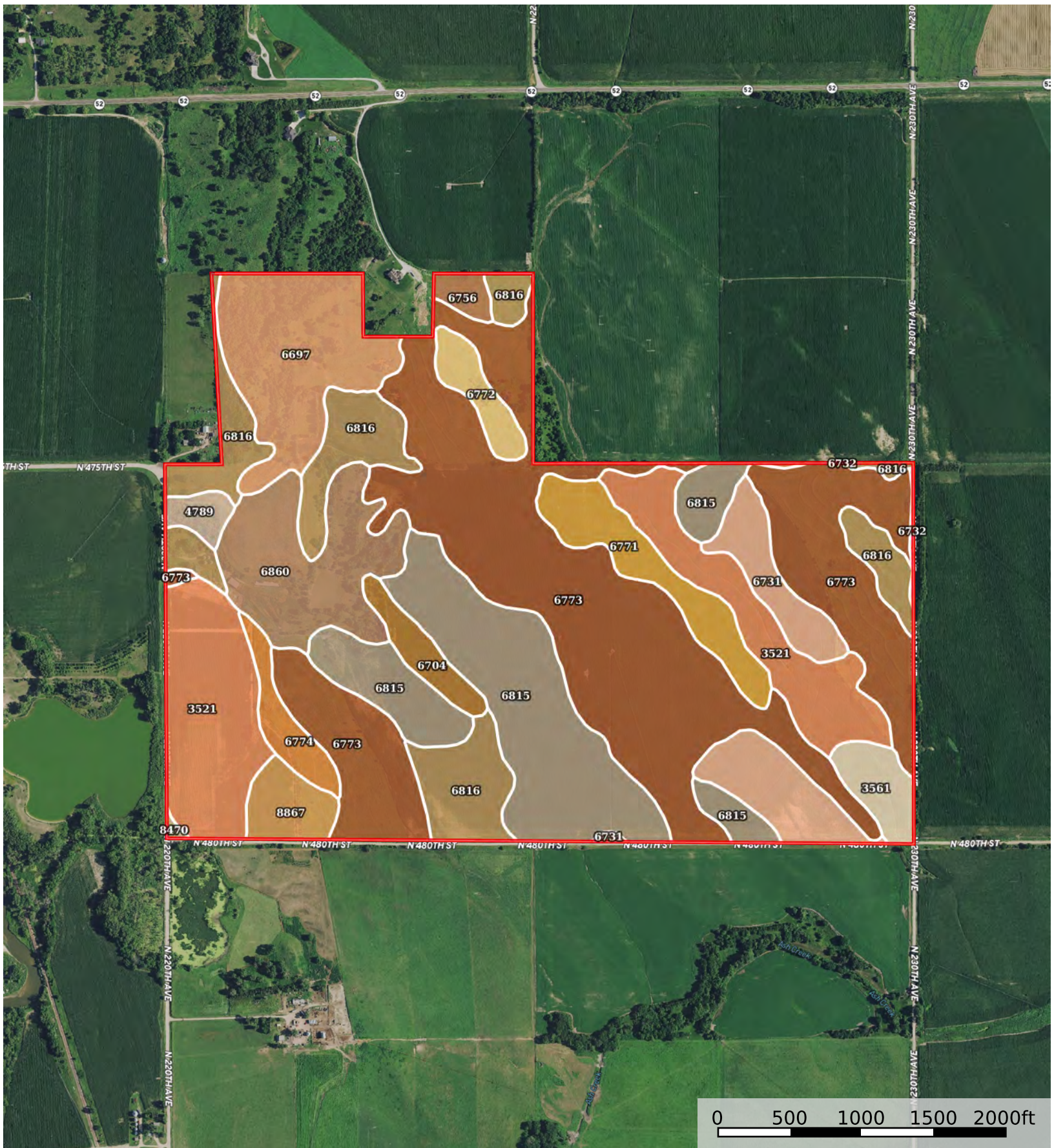
The information contained herein was obtained from sources deemed to be reliable. Land id™ Services makes no warranties or guarantees as to the completeness or accuracy thereof.





# Nance12 Tract 1

Nance County, Nebraska, 380.8 AC +/-



Tract 1

Tract 1 376.4 ac

SOIL CODE	SOIL DESCRIPTION	ACRES	%	CPI	NCCPI	CAP
6773	Nora-Hersh complex, 6 to 11 percent slopes, severely eroded	122.94	32.66	0	51	3e
6815	Loretto-Thurman complex, 1 to 3 percent slopes	53.26	14.15	0	61	2e
3521	Cass fine sandy loam, 0 to 2 percent slopes, occasionally flooded	44.15	11.73	0	52	2w
6816	Loretto-Thurman complex, 3 to 6 percent slopes	35.99	9.56	0	60	3e
6697	Crofton-Nora complex, 17 to 30 percent slopes	27.05	7.19	34	40	6e
6860	Crofton silt loam, 8 to 17 percent slopes, eroded	25.03	6.65	0	56	4e
6731	Thurman-Ortello fine sandy loams, 2 to 6 percent slopes, eroded	19.82	5.27	0	43	3e
6771	Nora-Hersh complex, 11 to 17 percent slopes, severely eroded	13.62	3.62	0	47	4e
8867	Hord fine sandy loam, 1 to 3 percent slopes	6.29	1.67	0	67	2e
3561	Hobbs silt loam, 0 to 2 percent slopes, occasionally flooded, cool	6	1.59	0	79	2w
6774	Nora-Crofton complex, 11 to 17 percent slopes, eroded	5.64	1.5	50	60	4e
6704	Thurman loamy fine sand, 2 to 6 percent slopes, eroded	5.35	1.42	0	36	4e
6772	Nora-Ortello complex, 6 to 11 percent slopes, eroded	5.27	1.4	0	54	3e
4789	Valentine fine sand, 3 to 17 percent slopes	2.83	0.75	0	22	6e
6756	Nora silt loam, 6 to 11 percent slopes, eroded	2.36	0.63	52	67	3e
6732	Thurman-Ortello fine sandy loams, 6 to 11 percent slopes, eroded	0.46	0.12	0	42	4e
8470	Gibbon silt loam, 0 to 2 percent slopes, occasionally flooded	0.34	0.09	0	78	2w
TOTALS		376.4(*)	100%	3.52	52.94	3.08









(\*) Total acres may differ in the second decimal compared to the sum of each acreage soil. This is due to a round error because we only show the acres of each soil with two decimal.

## Capability Legend

Increased Limitations and Hazards

Decreased Adaptability and Freedom of Choice Users

Land, Capability

								
	1	2	3	4	5	6	7	8
'Wild Life'	•	•	•	•	•	•	•	•
Forestry	•	•	•	•	•	•	•	
Limited	•	•	•	•	•	•	•	
Moderate	•	•	•	•	•	•		
Intense	•	•	•	•	•			
Limited	•	•	•	•				
Moderate	•	•	•					
Intense	•	•						
Very Intense	•							

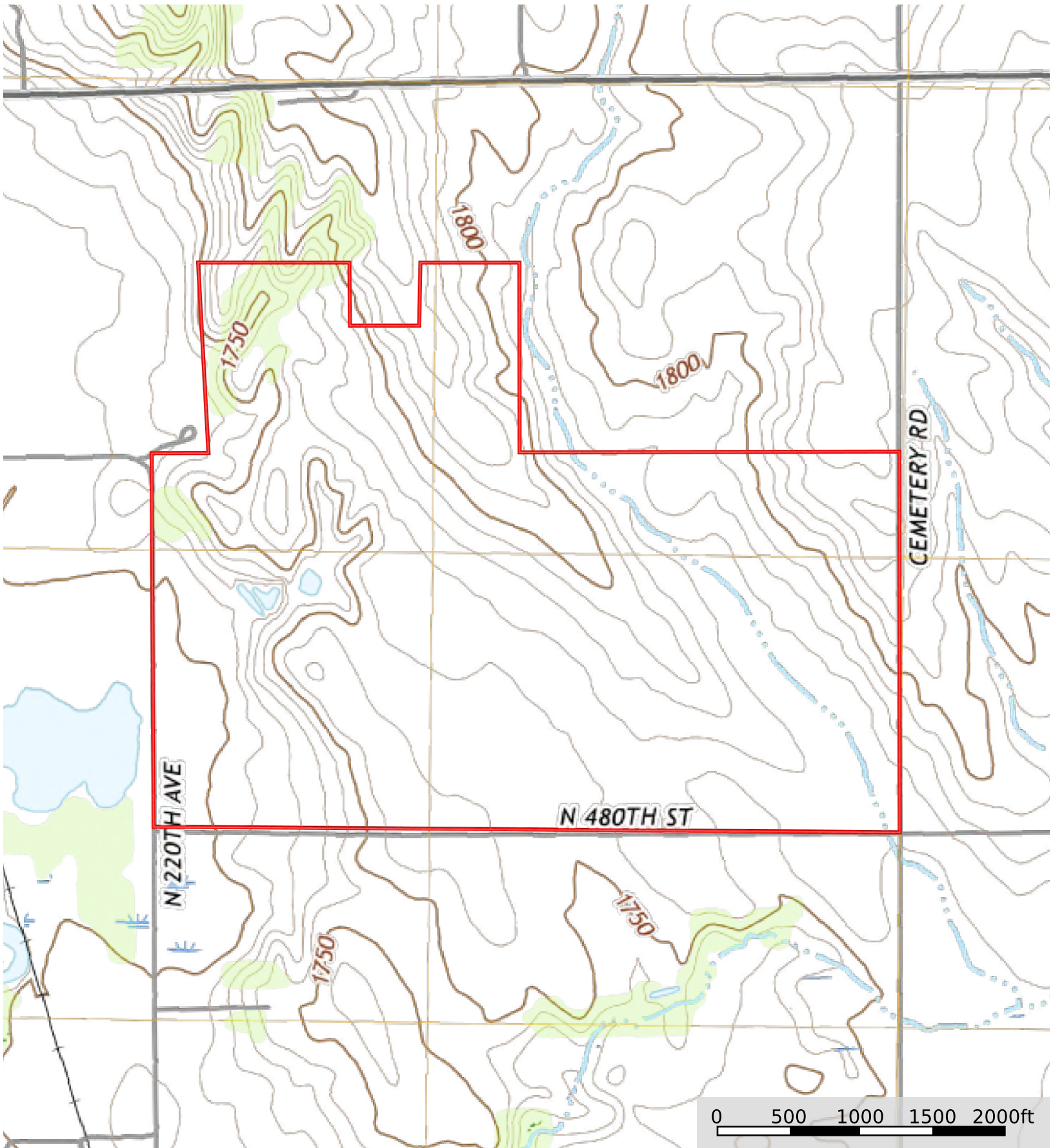
### Grazing Cultivation

(c) climatic limitations (e) susceptibility to erosion

(s) soil limitations within the rooting zone (w) excess of water

# Nance12 Tract 1

Nance County, Nebraska, 380.8 AC +/-



 Tract 1



The information contained herein was obtained from sources deemed to be reliable. Land id™ Services makes no warranties or guarantees as to the completeness or accuracy thereof.