



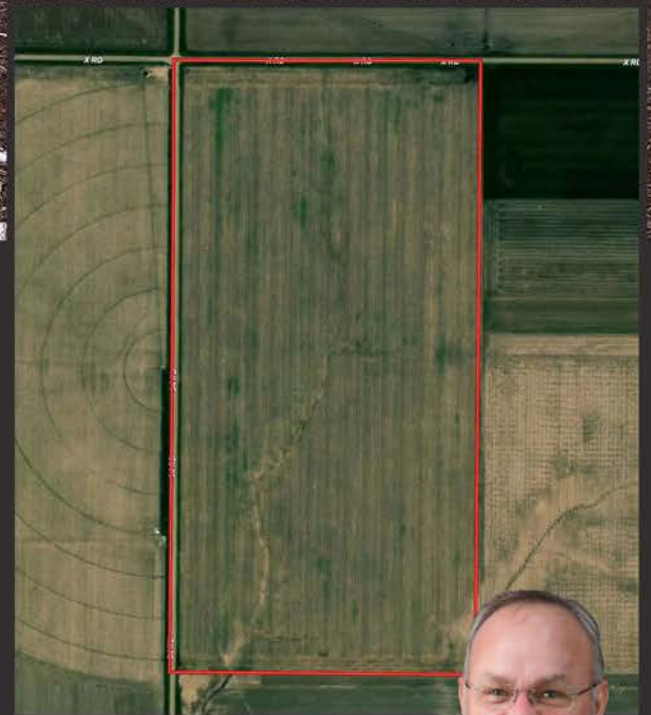
OFFERED AT
\$475,000

79.51 +/- ACRES

DRYLAND

FARM

FRANKLIN COUNTY, NE



JOEL GRAMS

*Farm & Ranch Specialist
Minden, Nebraska*

*Joel.Grams@AgWestLand.com
308-830-0166*

This very nice, non-irrigated 80 boasts high productivity and is situated just one mile from paved Nebraska Spur 31A and 2 miles east of Highway 10. Don't miss out on this accessible and conveniently located farm.

PO BOX 1098, HOLDREGE, NE 68949 | 866-995-8067 | AGWESTLAND.COM



PROPERTY DETAILS

Total Acres (Per Assessor) - 79.51 ±
Dryland Acres - 77.02 ±
Other Acres - 2.49 ±

LEGAL DESCRIPTION

W1/2 NW1/4 Section 9-Township 4
North-Range 14 West of the 6th P.M.

PROPERTY TAXES

\$ 2,672.66

FSA INFORMATION

Total Cropland Acres - 77.02 +/-
Corn - 77.0 Base Acres - 134 PLC Yield
Total Base Acres - 77.0

PROPERTY DIRECTIONS

Travel 1 mile west of Upland, NE on
Nebraska Spur 31A. Turn north and go 1
mile on 34 Road. The property is on the
east side of the road, southeast of the
34 Road and X Road intersection.



- All mineral rights owned by seller, if any, to convey to buyer.
- All leases have been terminated.

