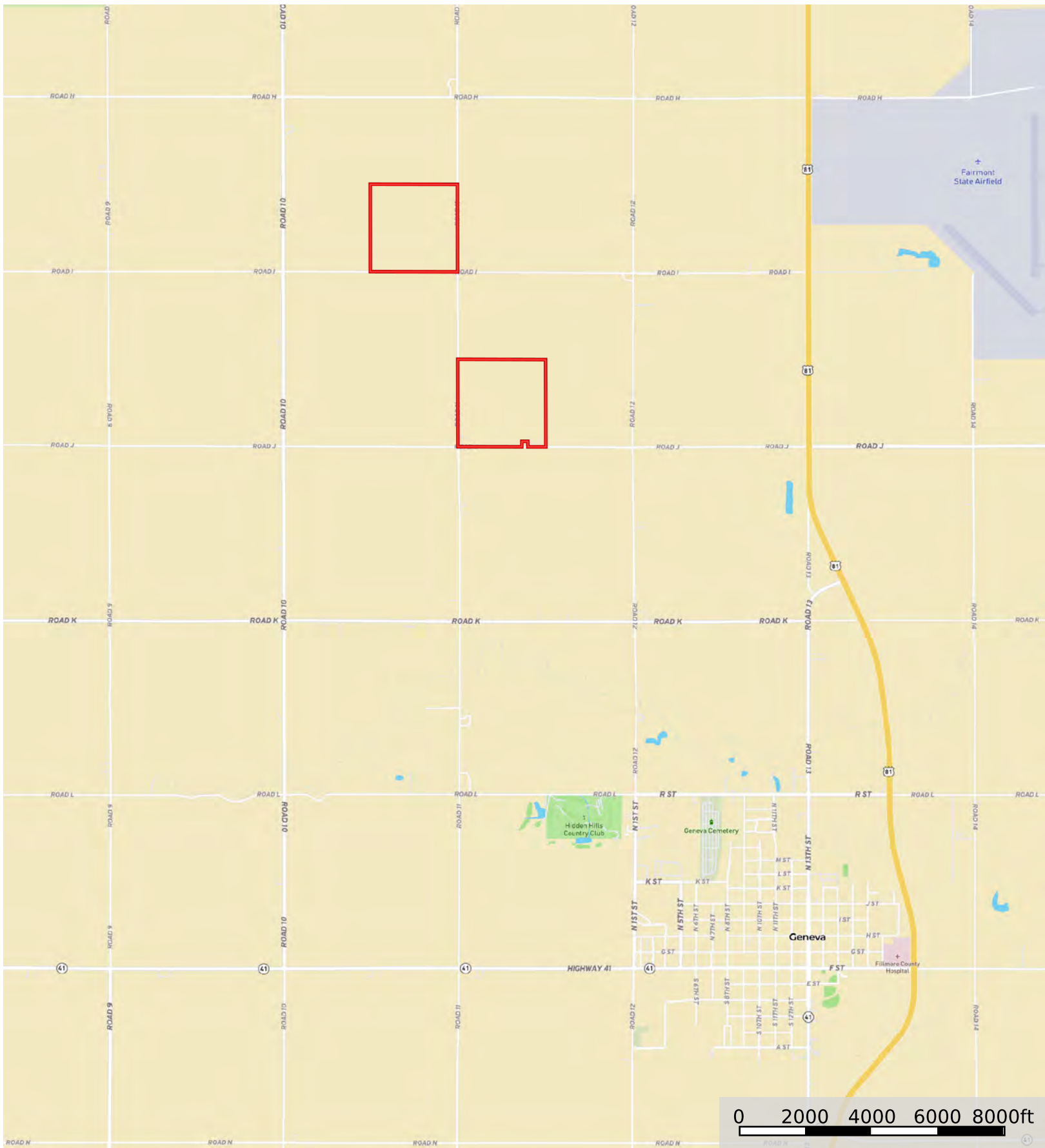
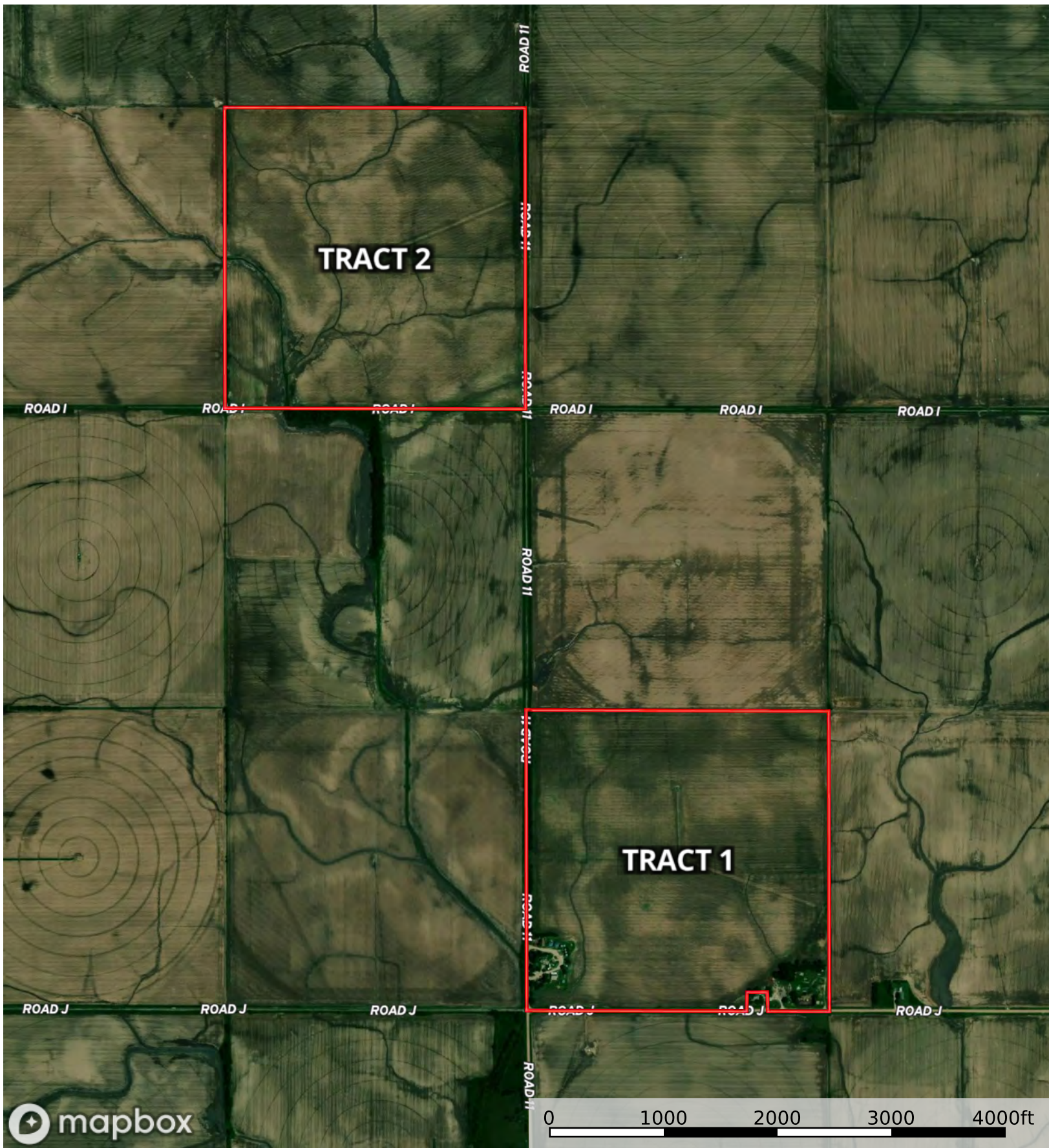


318.69 +/- Acres - Fillmore Co

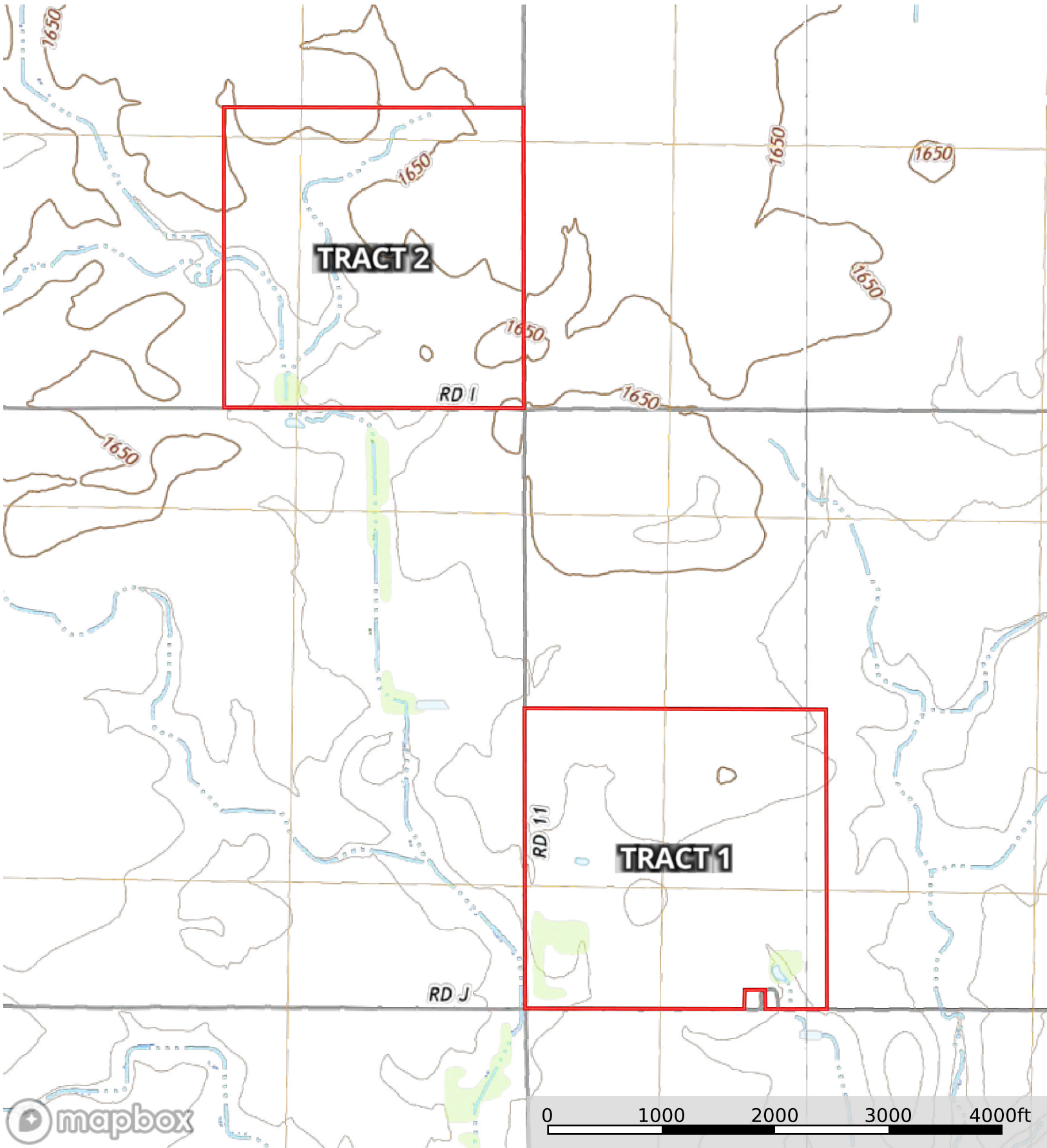
Fillmore County, Nebraska, 318.69 AC +/-



- Tract 1
- Tract 2



- Tract 1
- Tract 2



 Tract 1  Tract 2



- Tract 1
- Tract 2

|  All Polygons 320.57 ac

SOIL CODE	SOIL DESCRIPTION	ACRES	%	CPI	NCCPI	CAP
3825	Crete silt loam, 1 to 3 percent slopes	116.9	36.47	0	63	2e
3824	Crete silt loam, 0 to 1 percent slopes	94.68	29.53	0	64	2s
3831	Crete silty clay loam, 3 to 7 percent slopes, eroded	94.27	29.41	0	54	3e
3820	Butler silt loam, 0 to 1 percent slopes	9.04	2.82	0	62	2w
3817	Butler silty clay loam, 0 to 1 percent slopes	4.5	1.4	0	69	2w
3561	Hobbs silt loam, occasionally flooded	1.18	0.37	0	81	2w
TOTALS		320.57(*)	100%	-	60.77	2.29

(*) Total acres may differ in the second decimal compared to the sum of each acreage soil. This is due to a round error because we only show the acres of each soil with two decimal.

|  Boundary 160.12 ac

SOIL CODE	SOIL DESCRIPTION	ACRES	%	CPI	NCCPI	CAP
3831	Crete silty clay loam, 3 to 7 percent slopes, eroded	72.04	44.99	0	54	3e
3825	Crete silt loam, 1 to 3 percent slopes	57.57	35.95	0	63	2e
3824	Crete silt loam, 0 to 1 percent slopes	28.62	17.87	0	64	2s
3820	Butler silt loam, 0 to 1 percent slopes	1.89	1.18	0	62	2w
TOTALS		160.12(*)	100%	-	59.11	2.45

(*) Total acres may differ in the second decimal compared to the sum of each acreage soil. This is due to a round error because we only show the acres of each soil with two decimal.

|  Boundary 160.45 ac

SOIL CODE	SOIL DESCRIPTION	ACRES	%	CPI	NCCPI	CAP
3824	Crete silt loam, 0 to 1 percent slopes	66.06	41.17	0	64	2s
3825	Crete silt loam, 1 to 3 percent slopes	59.33	36.98	0	63	2e
3831	Crete silty clay loam, 3 to 7 percent slopes, eroded	22.23	13.85	0	54	3e
3820	Butler silt loam, 0 to 1 percent slopes	7.15	4.46	0	62	2w
3817	Butler silty clay loam, 0 to 1 percent slopes	4.5	2.8	0	69	2w
3561	Hobbs silt loam, occasionally flooded	1.18	0.74	0	81	2w
TOTALS		160.45(*)	100%	-	62.42	2.14









(*) Total acres may differ in the second decimal compared to the sum of each acreage soil. This is due to a round error because we only show the acres of each soil with two decimal.

Capability Legend

Increased Limitations and Hazards

Decreased Adaptability and Freedom of Choice Users

Land, Capability

								
	1	2	3	4	5	6	7	8
'Wild Life'	•	•	•	•	•	•	•	•
Forestry	•	•	•	•	•	•	•	
Limited	•	•	•	•	•	•	•	
Moderate	•	•	•	•	•	•		
Intense	•	•	•	•	•			
Limited	•	•	•	•				
Moderate	•	•	•					
Intense	•	•						
Very Intense	•							

Grazing Cultivation

(c) climatic limitations (e) susceptibility to erosion

(s) soil limitations within the rooting zone (w) excess of water

Fillmore08

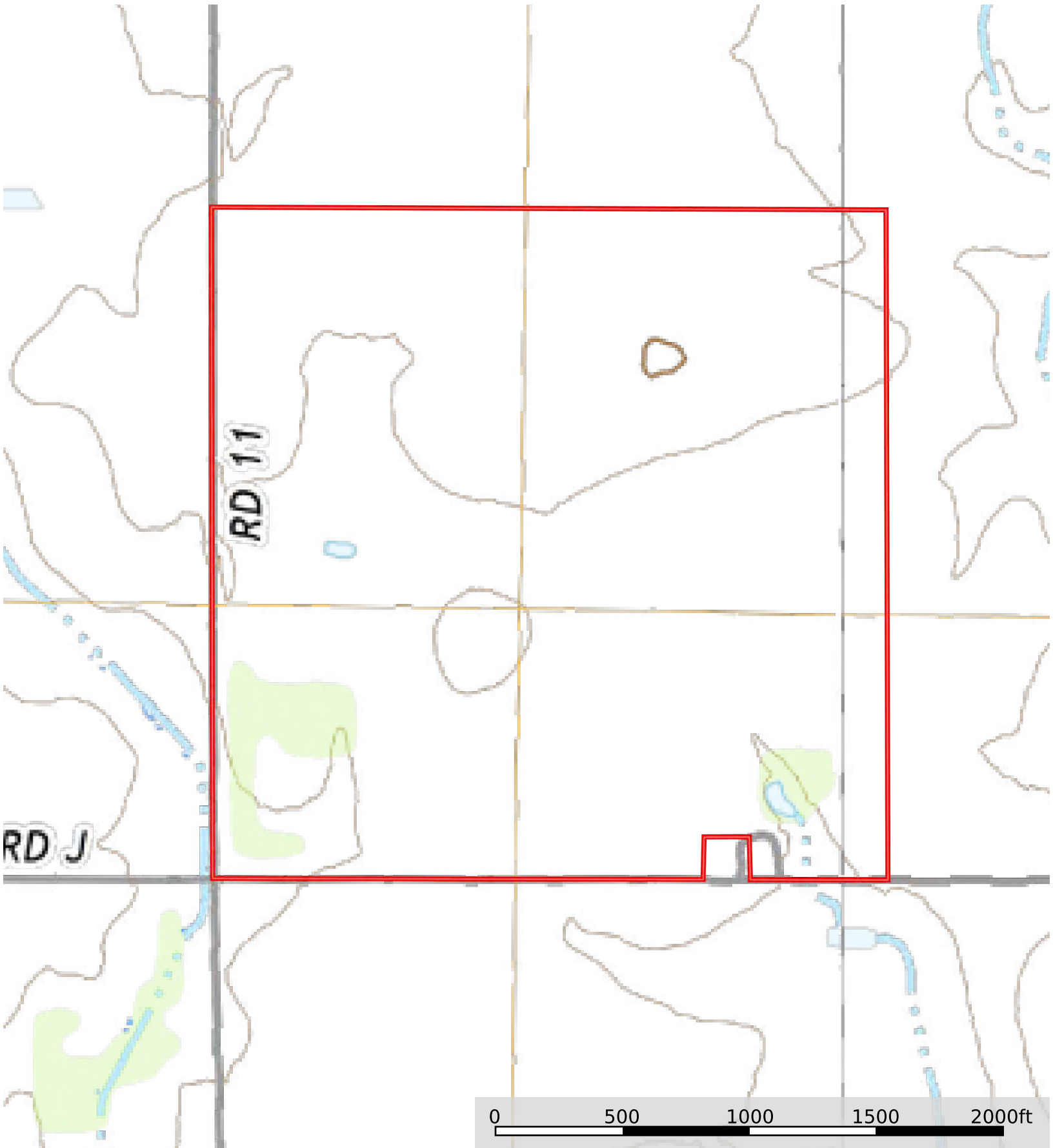
Fillmore County, Nebraska, 318.69 AC +/-



 Tract 1  Tract 2

Fillmore08

Fillmore County, Nebraska, 318.69 AC +/-



 Tract 1  Tract 2



-  Tract 1
-  Tract 2

Tract 1 160.45 ac

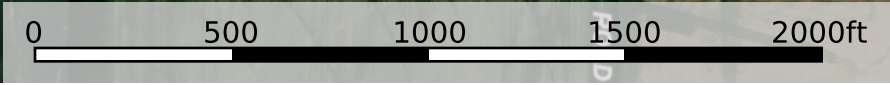
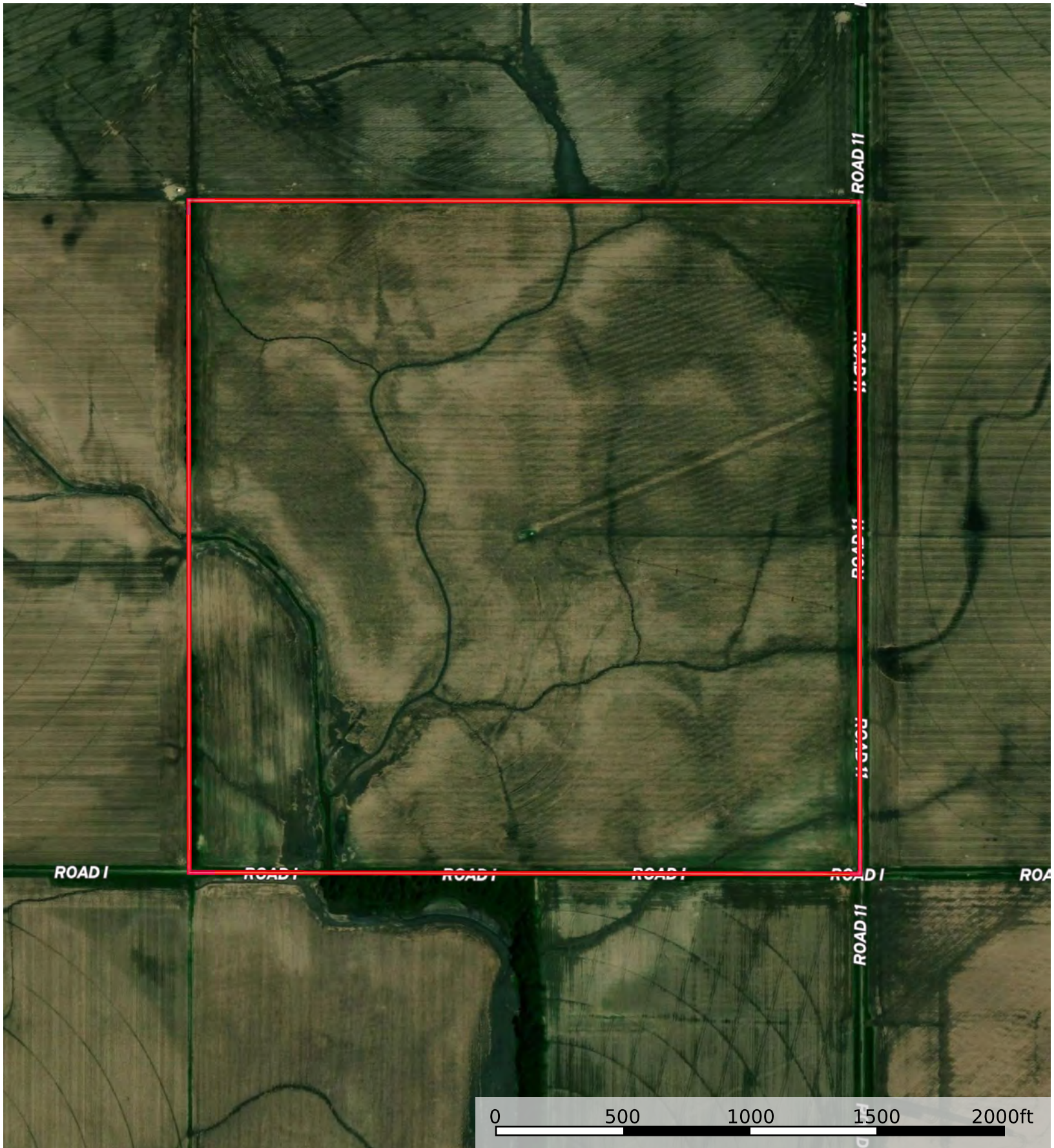
SOIL CODE	SOIL DESCRIPTION	ACRES	%	CPI	NCCPI	CAP
3824	Crete silt loam, 0 to 1 percent slopes	66.06	41.17	0	64	2s
3825	Crete silt loam, 1 to 3 percent slopes	59.33	36.98	0	63	2e
3831	Crete silty clay loam, 3 to 7 percent slopes, eroded	22.23	13.85	0	54	3e
3820	Butler silt loam, 0 to 1 percent slopes	7.15	4.46	0	62	2w
3817	Butler silty clay loam, 0 to 1 percent slopes	4.5	2.8	0	69	2w
3561	Hobbs silt loam, occasionally flooded	1.18	0.74	0	81	2w
TOTALS		160.45(*)	100%	-	62.42	2.14

(*) Total acres may differ in the second decimal compared to the sum of each acreage soil. This is due to a round error because we only show the acres of each soil with two decimal.

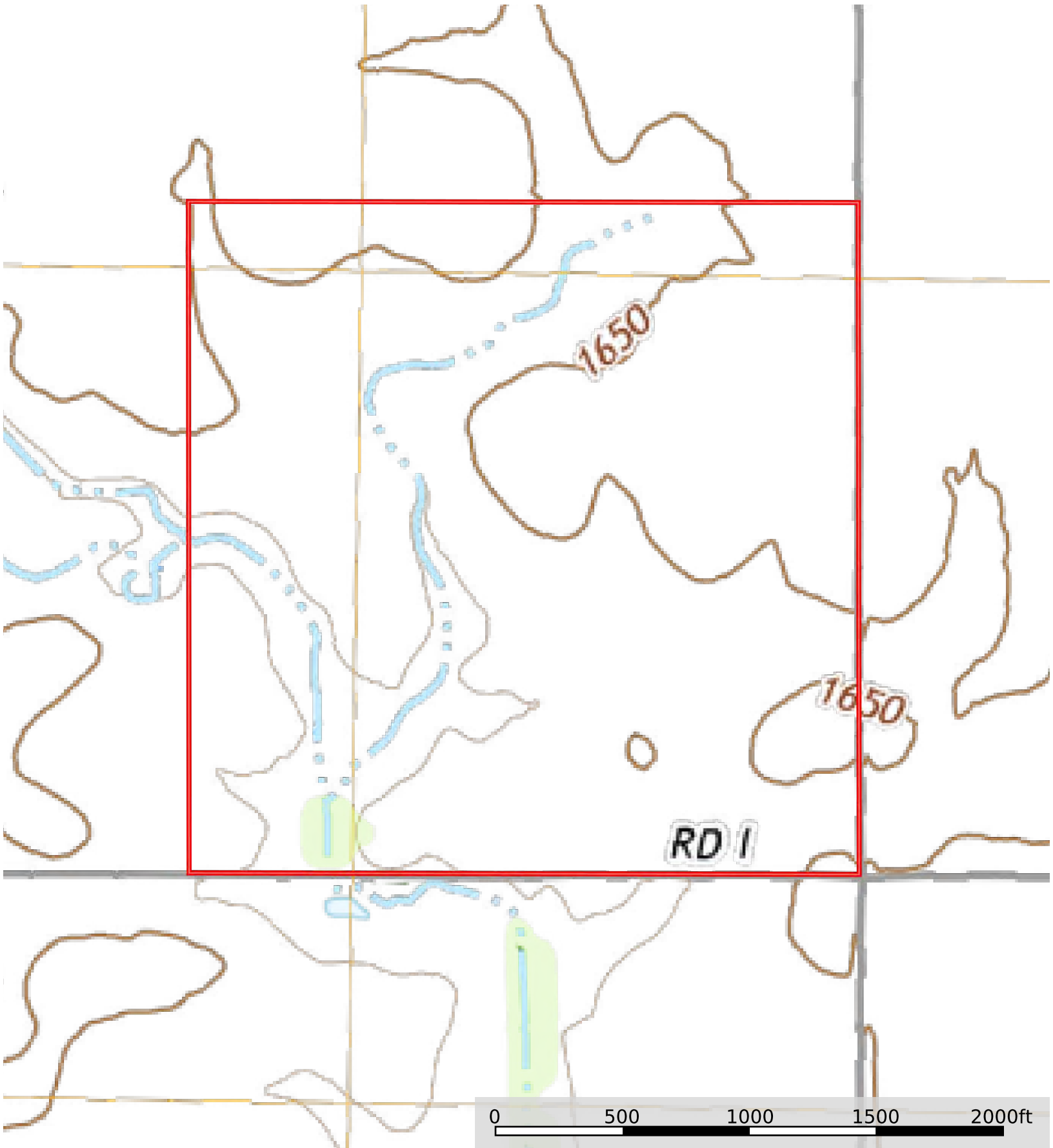


Fillmore08

Fillmore County, Nebraska, 318.69 AC +/-



-  Tract 1
-  Tract 2



 Tract 1  Tract 2



Tract 1 Tract 2

Tract 2 160.12 ac

SOIL CODE	SOIL DESCRIPTION	ACRES	%	CPI	NCCPI	CAP
3831	Crete silty clay loam, 3 to 7 percent slopes, eroded	72.04	44.99	0	54	3e
3825	Crete silt loam, 1 to 3 percent slopes	57.57	35.95	0	63	2e
3824	Crete silt loam, 0 to 1 percent slopes	28.62	17.87	0	64	2s
3820	Butler silt loam, 0 to 1 percent slopes	1.89	1.18	0	62	2w
TOTALS		160.12(*)	100%	-	59.11	2.45

(*) Total acres may differ in the second decimal compared to the sum of each acreage soil. This is due to a round error because we only show the acres of each soil with two decimal.

