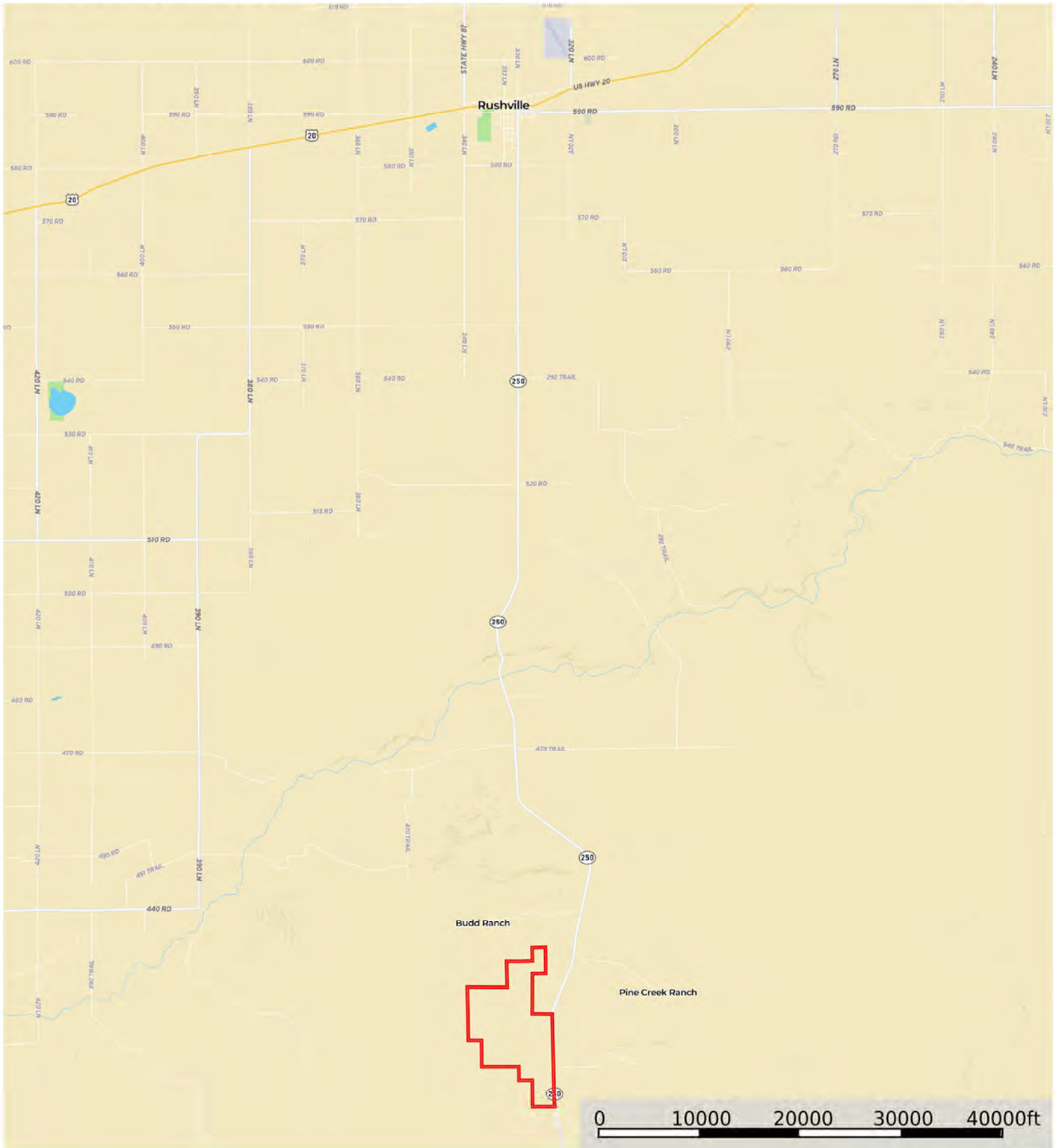


# Sheridan49-Nielson

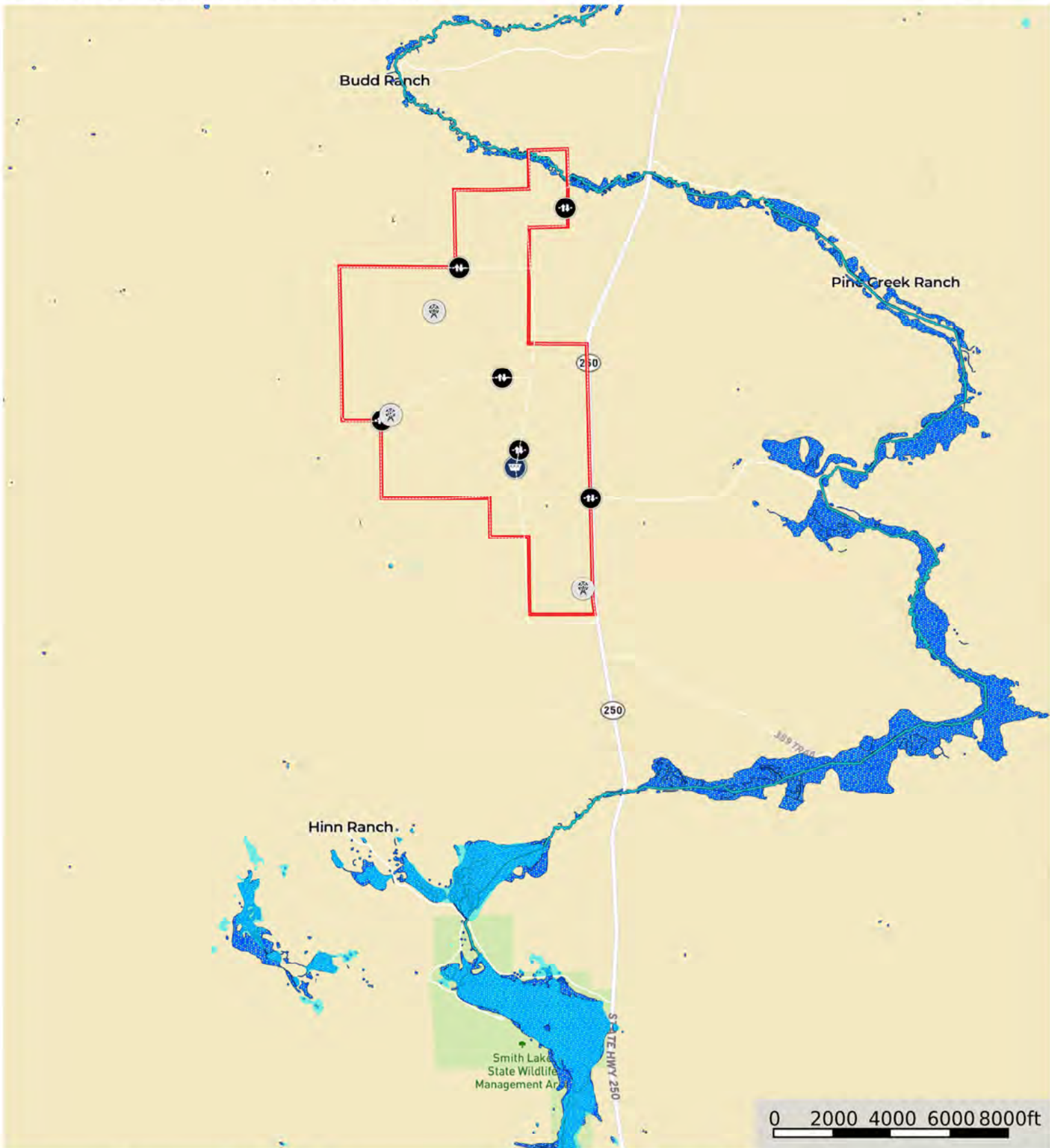
Sheridan County, Nebraska, 1787.87 AC +/-



Boundary

# Sheridan49-Nielson

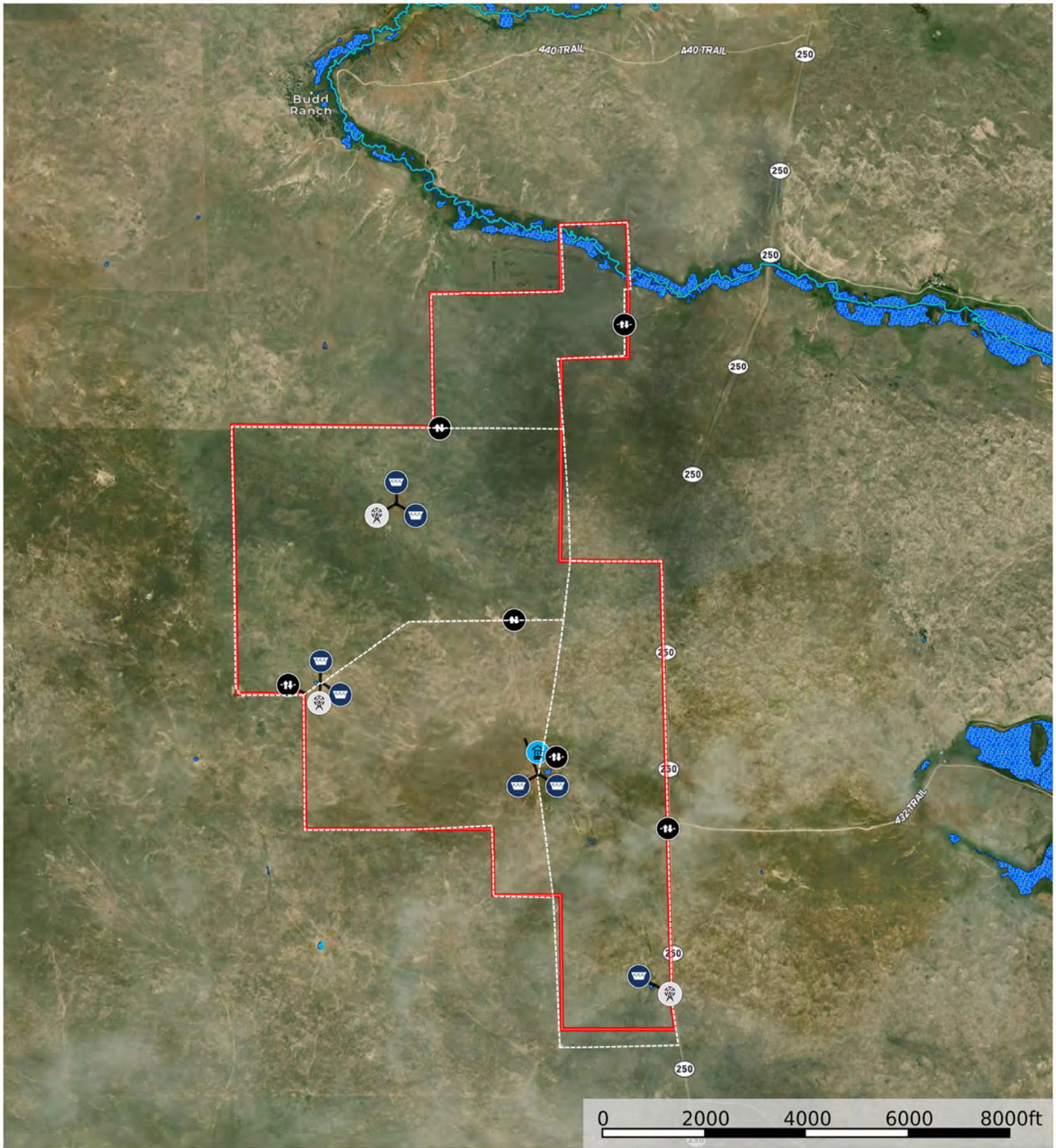
Sheridan County, Nebraska, 1787.87 AC +/-



0 2000 4000 6000 8000ft



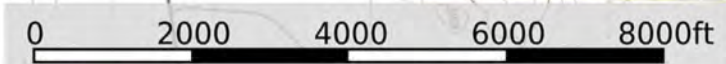
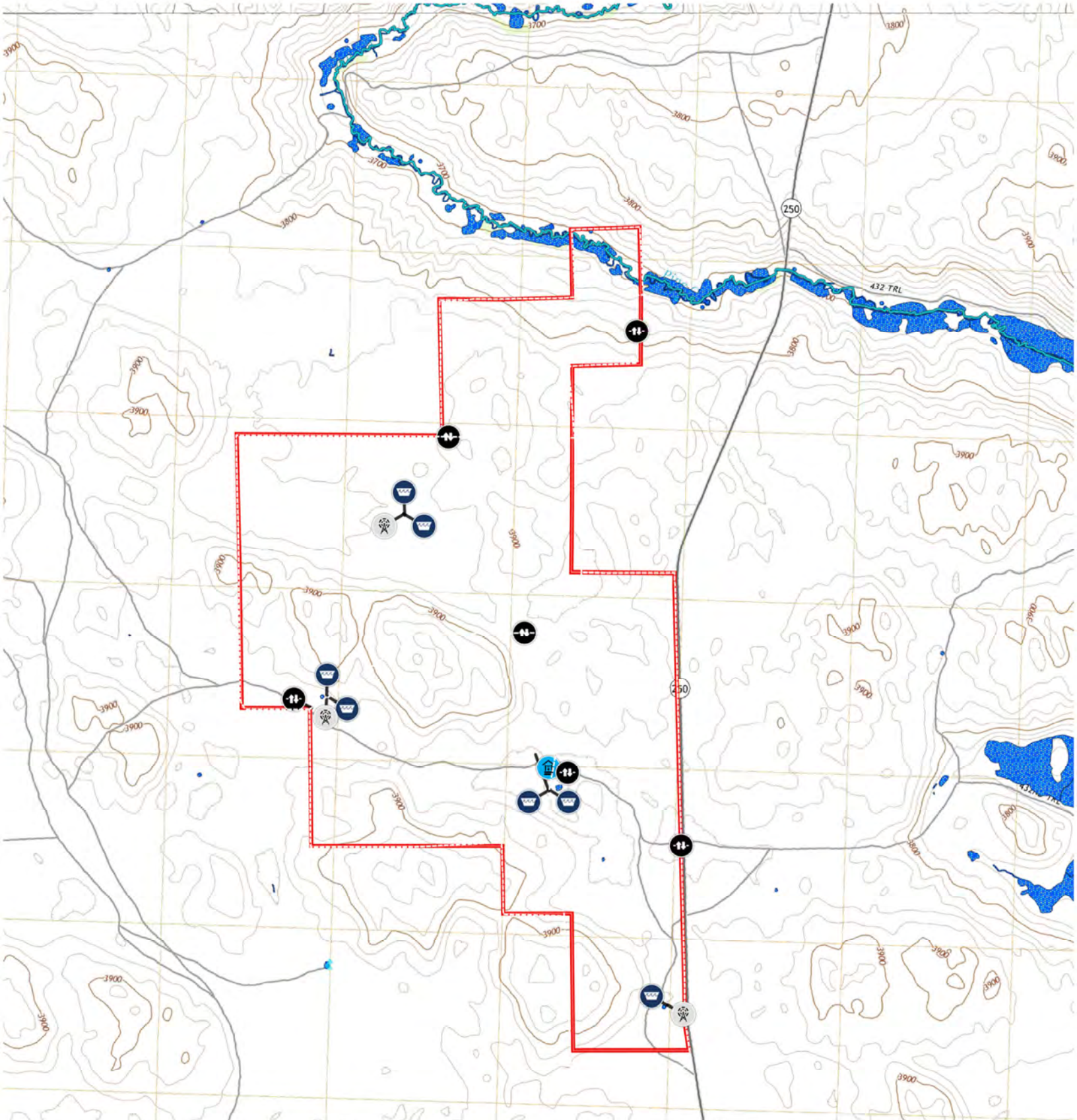






# Sheridan49-Nielson

Sheridan County, Nebraska, 1787.87 AC +/-

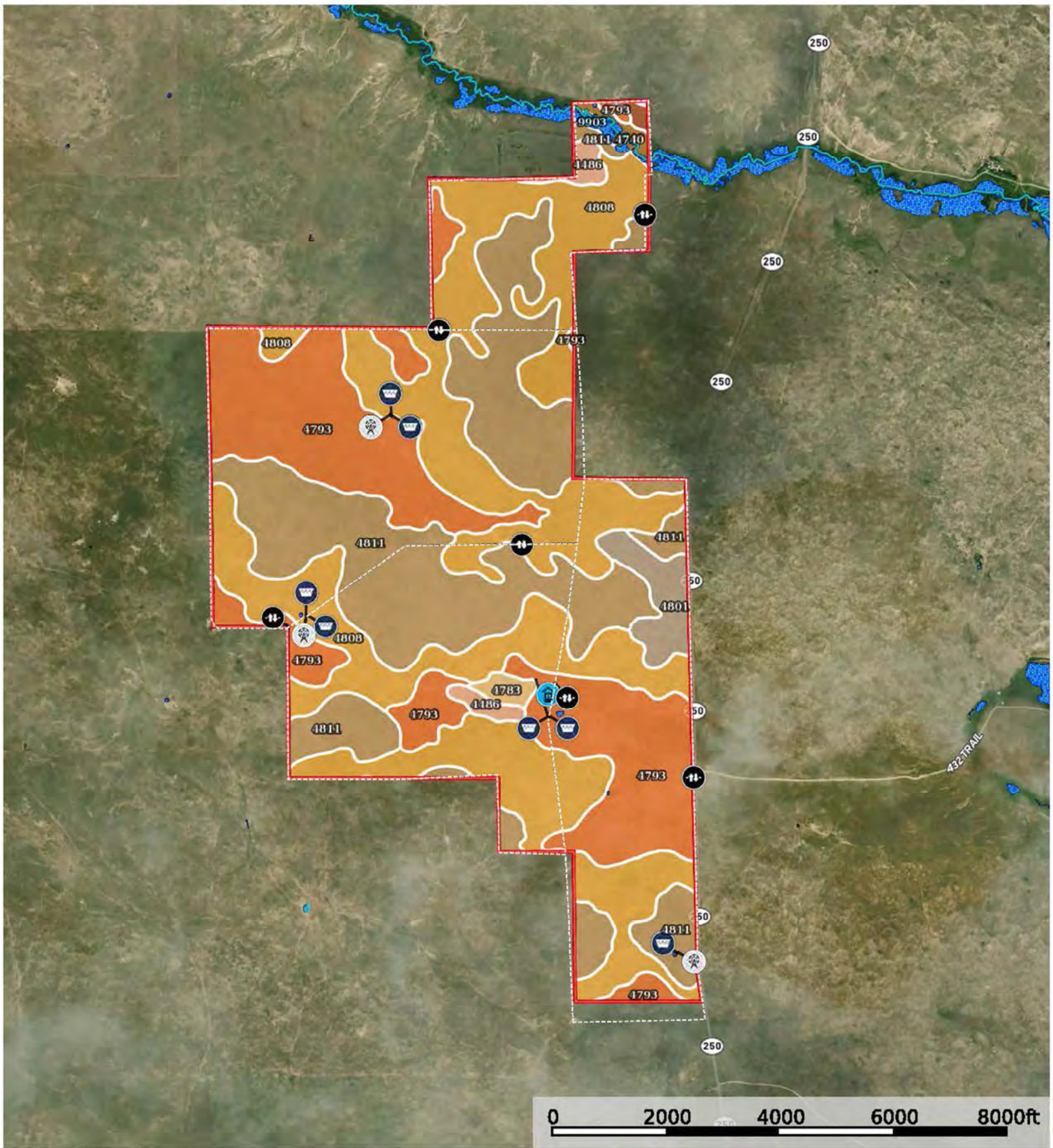


- Windmill
- Gate
- Water Storage Tank
- Solar Well
- Fence
- Boundary
- Wetlands
- Riparian
- Stream, Intermittent
- River/Creek
- Water Body




# Sheridan49-Nielson

Sheridan County, Nebraska, 1787.87 AC +/-





|  Boundary 1796.64 ac

SOIL CODE	SOIL DESCRIPTION	ACRES	%	CPI	NCCPI	CAP
4808	Valentine fine sand, rolling, 9 to 24 percent slopes, dry	705.1 6	39.25	0	13	6e
4811	Valentine fine sand, rolling and hilly, 9 to 60 percent slopes, dry	538.7 3	29.99	0	10	6e
4793	Valentine fine sand, 3 to 9 percent slopes, dry	460.0 6	25.61	0	16	6e
4801	Valentine fine sand, hilly, 24 to 60 percent slopes, dry	43.46	2.42	0	3	7e
4486	Dunday loamy fine sand, 0 to 3 percent slopes, dry	20.22	1.13	0	18	4e
4740	Tryon fine sandy loam, 0 to 3 percent slopes	11.12	0.62	29	17	5w
4783	Valentine fine sand, 0 to 3 percent slopes, dry	10.43	0.58	0	16	6e
4718	Orpha-Rock outcrop complex, 30 to 60 percent slopes	3.95	0.22	0	2	7e
9903	Fluvaquents, sandy, frequently flooded	3.19	0.18	6	2	8w
4807	Valentine fine sand, rolling, 9 to 24 percent slopes	0.32	0.02	11	16	6e
TOTALS		1796. 64(*)	100%	0.19	12.68	6.0









(\*) Total acres may differ in the second decimal compared to the sum of each acreage soil. This is due to a round error because we only show the acres of each soil with two decimal.

## Capability Legend

Increased Limitations and Hazards

Decreased Adaptability and Freedom of Choice Users

Land, Capability

								
	1	2	3	4	5	6	7	8
'Wild Life'	•	•	•	•	•	•	•	•
Forestry	•	•	•	•	•	•	•	
Limited	•	•	•	•	•	•	•	
Moderate	•	•	•	•	•	•		
Intense	•	•	•	•	•			
Limited	•	•	•	•				
Moderate	•	•	•					
Intense	•	•						
Very Intense	•							

### Grazing Cultivation

(c) climatic limitations (e) susceptibility to erosion

(s) soil limitations within the rooting zone (w) excess of water