

Norton County CRP/Recreational Land



- ⇒ Incredible hunting and investment property!
- ⇒ Located only two and a half miles north of Edmond, KS, along County Road E4.
- ⇒ Provides an abundance of wildlife habitat (whitetail deer, pheasant, quail).
- ⇒ Deep draws lined with large thickets and heavy brush cover are stretched across the property.

Total Acres - 76.80 +/-
CRP Acres - 57.30 +/- Recreational Acres - 19.50 +/-
Annual CRP Payment - \$2,292.00
Legal Description - W2 NW4 33-4-22
Property Taxes - \$594.68
Price- \$100,000.00

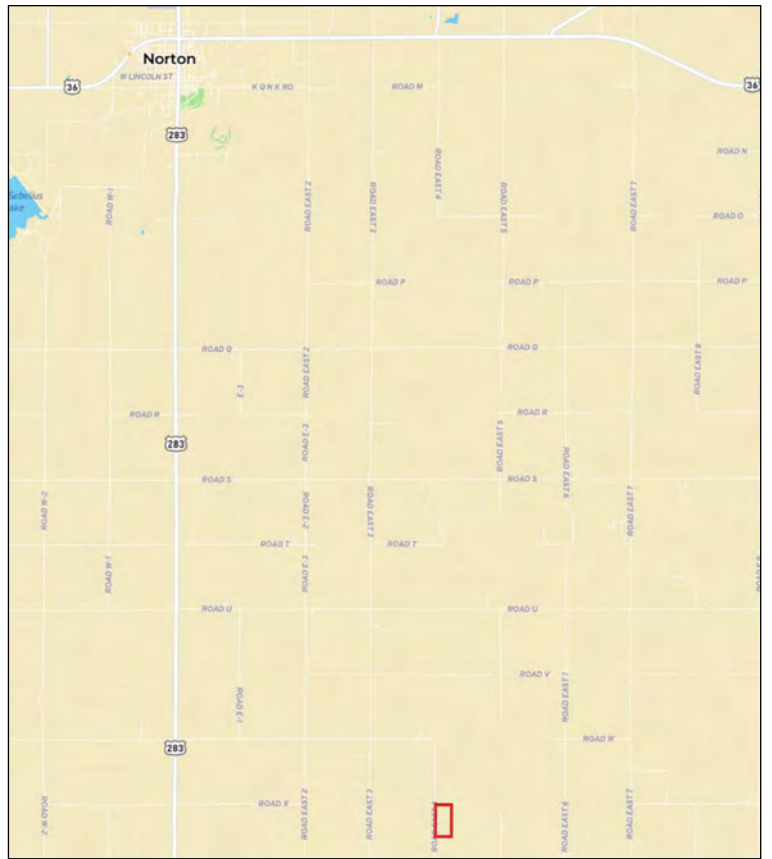
Directions: Drive south from Norton on Highway 283 approximately 14 miles and turn east on Hwy 9. Drive 3.5 miles to County Road E3 and travel north for 2 miles. Turn east on County Road Y and drive 1 mile. Turn north on County Road E4 and drive a half-mile. The property will be located on the east side of the

Clayton Esslinger | Farm & Ranch Specialist | Norton, KS
785.202.2066 | Clayton.Esslinger@AgWestLand.com

AgWest Land Brokers, LLC | 415 W. 4th Ave. PO Box 1098
Holdrege, NE 68949 | 866-995-8067

AgWestLand.com





FARM | RECREATIONAL | RANCH | INVESTMENT



Your Local Land Expert

Public Auctions · Sealed Bid Auctions
Online Auctions · Private Treaty Listings

AgWestLand.com



The information contained herein is as obtained by AgWest Land Brokers LLC—Holdrege, NE from the owner and other sources. Even though this information is considered reliable, neither broker nor owner make any guarantee, warranty or representation as to the correctness of any data or descriptions. The accuracy of such statements should be determined through independent investigation made by the prospective purchaser. This offer for sale is subject to prior sale, errors and omissions, change of price, terms or other conditions or withdrawal from sale in whole or in part, by seller without notice and at the sole discretion of seller. Readers are urged to form their own independent conclusions and evaluations in consultation with legal counsel, accountants, and/or investment advisors concerning any and all material contained herein. Maps are for illustrative purposes only and are not intended to represent actual property lines.