

1407 West 4th Ave | Holdrege, NE 68949

Phelps County

Price Reduction: \$150,000



Building Type:	Industrial, Warehouse & Distribution, Commercial
Zoning:	Commercial
Site Size:	2.028 Acres
Year Built:	1962
Former Use:	Agricultural Commodity Storage Company
Can Subdivide:	No
Within City Limits:	No
Construction Type:	Metal or Steel
Floor Type:	Concrete
Property Taxes:	\$2,222.94

**Property and Area Description**  
Six building complex including a concrete elevator on 2.028 acres. Rail siding to the site.

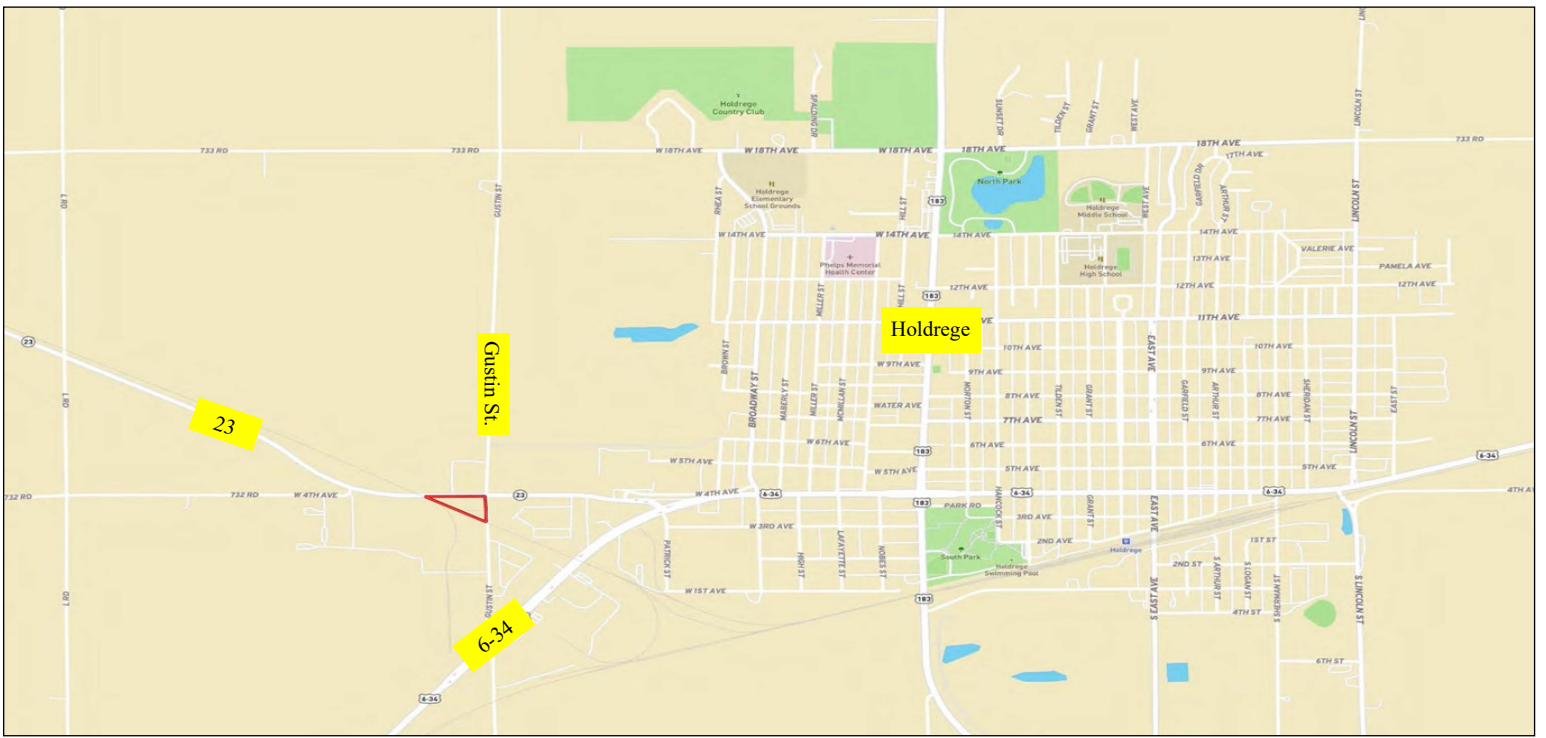
- Building 1: Warehouse, 4,000 sf
- Building 2: Warehouse, 850 sf
- Building 3: Warehouse, 2,600 sf
- Building 4: Office, 1,344 sf
- Building 5: Utility, 698 sf
- Building 6: Elevator, 49,202 BU
- Scale: 60 ton



**Jeff Moon, ALC | Farm & Ranch Specialist**  
**308.627.2630 | Jeff.Moon@AgWestLand.com**

AgWest Land Brokers | 415 W. 4th Ave. PO Box 1098  
Holdrege, NE 68949 | 866-995-8067

**AgWestLand.com**



**Your Local Land Expert**  
 Public Auctions · Sealed Bid Auctions  
 Online Auctions · Private Treaty Listings

The information contained herein is as obtained by AgWest Land Brokers—Holdrege, NE from the owner and other sources. Even though this information is considered reliable, neither broker nor owner make any guarantee, warranty or representation as to the correctness of any data or descriptions. The accuracy of such statements should be determined through independent investigation made by the prospective purchaser. This offer for sale is subject to prior sale, errors and omissions, change of price, terms or other conditions or withdrawal from sale in whole or in part, by seller without notice and at the sole discretion of seller. Readers are urged to form their own independent conclusions and evaluations in consultation with legal counsel, accountants, and/or investment advisors concerning any and all material contained herein.